

Release date: 22nd August 2013Next release: 27th August 2013, *Employment, May-July 2013*

Number: 126

Fewer births and deaths

Vital events, January–June 2013

According to preliminary data, in the first half of 2013, 41,709 children were born, 4.5 percent fewer than a year earlier. The number of deceases was 64,277, which meant a decrease of 4.3 percent compared to January–June 2012. Natural decrease was by 898 persons lower than in the previous year, it amounted to 22,568 persons.

According to preliminary data, fewer children were born in the first half of the year, but the number of deceases also declined year-on-year. The number of live-births was lower in the first five months compared to the corresponding months last year, while in June it almost reached the number of the previous year. The largest decline, 8.8 percent occurred in April, however the setback in February was also significant, 7.9 percent year-on-year. On the whole, 41,709 children were born in the first half of the year, 1,976 children or 4.5 percent less than in the corresponding period of the previous year. The decrease in the number of live births without the leap-day effect was lower, it amounted to 4.0 percent.

The number of deaths did not reach the level of the previous year in each of the six months, the decrease in February and March was especially significant; 7.3 percent less persons deceased on the average than one year before. On the whole, the number of deaths fell back by 4.3 percent in the first half of the year, which can be traced back to the 2,874 fewer deceases than in the corresponding months last year. Taking into account the leap-day effect, the number of deaths declined by 3.7 percent.

After the slight rise in the previous year, the number of marriages decreased again this January–June year-on-year. In two months more, while in four months fewer marriages were registered than a year earlier. A considerable fall occurred in January and February, when the number of marriages declined by 11.7 percent on the average, which was followed by a rise of 4.8 percent in April and May. Year-on-year, the number of marriages fell again by 3.1% in June. On the whole, 14,454 marriages were registered in the first half of 2013, which meant a decline of 143 couples (1.0 percent) year-on-year.

The number of live births was 8.5, while that of deceases was 13.1 per thousand inhabitants. The former was 0.4 per mille, while the latter was 0.5 per mille down compared to one year before. In the first half of 2013, the number of infant deaths was 5.1 per thousand live births, 0.3 per mille down on that in the previous year. The marriage rate (2.9 per mille) fell year-on-year by 0.1 per mille.

The absolute number of deaths fell at a faster rate than that of births resulting in a slight decline in the rate of natural decrease (from 4.8 mille to 4.6 mille), and, as opposed to 23,466 in January-June 2012, it was 22,568 persons in the first half of 2013.

The number of births and deceases changed at different rates by region. The number of births fell in every region, with the sharpest falls in Central Transdanubia, Central Hungary and Western Transdanubia (6.9, 6.1 and 6.1 percent respectively), and the lowest decreases in Southern Great Plain and Northern Great Plain (2.5 and 2.3 percent). The number of deceases also decreased in every region except one, at the highest rate of 8.0 percent in Southern Great Plain, while no year-on-year change was seen in Central Transdanubia.

As a result of this, in the first half of 2013, the rate of natural decrease declined in three regions, while it continued to grow in four regions. Due to a smaller decline in the number of live-births and a sharper fall in that of deceases, the rate of natural decrease dropped in Northern Great Plain and Southern Great

Plain by 15.7 and 14.2 percent respectively, while a significant rise was seen in Central Transdanubia mainly as a result of a sharper fall in the number of births. In terms of the number of marriages, three regions rose and four fell, Northern Great Plain was the region with the highest rise (4.4 percent). The sharpest fall (7.5 percent) was seen in Northern Hungary.

[Methodology](#)

More information: [detailed tables](#)

Ferenc Kamarás, e-mail: Ferenc.Kamaras@ksh.hu, phone: 345–6565.

1. A természetes népmozgalom főbb adatai
Main data of vital events

Év, hónap <i>Year, month</i>	Házasság- kötés <i>Marriage</i>	Élveszü- letés <i>Live birth</i>	Halálo- zás <i>Death</i>	Természe- tes szapo- rodás, fogyás (-) <i>Natural increase or dec- rease (-)</i>	1 éven aluli meghalt <i>Deceased under 1 year of age</i>	ezer lakosra – per thousand population				
						Házasság- kötés <i>Marriage</i>	Élveszü- letés <i>Live birth</i>	Halálo- zás <i>Death</i>	Természe- tes szapo- rodás, fogyás (-) <i>Natural increase or dec- rease (-)</i>	1000 élve- szülöttre jutó 1 éven aluli meghalt <i>Deceased under 1 year of age per thousand live-born</i>
1960	88 566	146 461	101 525	44 936	6 976	8,9	14,7	10,2	4,5	47,6
1970	96 612	151 819	120 197	31 622	5 449	9,3	14,7	11,6	3,1	35,9
1980	80 331	148 673	145 355	3 318	3 443	7,5	13,9	13,6	0,3	23,2
1990	66 405	125 679	145 660	-19 981	1 863	6,4	12,1	14,0	-1,9	14,8
2001	43 583	97 047	132 183	-35 136	789	4,3	9,5	13,0	-3,4	8,1
2002	46 008	96 804	132 833	-36 029	693	4,5	9,5	13,1	-3,5	7,2
2003	45 398	94 647	135 823	-41 176	690	4,5	9,3	13,4	-4,1	7,3
2004	43 791	95 137	132 492	-37 355	628	4,3	9,4	13,1	-3,7	6,6
2005	44 234	97 496	135 732	-38 236	607	4,4	9,7	13,5	-3,8	6,2
2006	44 528	99 871	131 603	-31 732	571	4,4	9,9	13,1	-3,2	5,7
2007	40 842	97 613	132 938	-35 325	577	4,1	9,7	13,2	-3,5	5,9
2008	40 105	99 149	130 027	-30 878	553	4,0	9,9	13,0	-3,1	5,6
2009	36 730	96 442	130 414	-33 972	495	3,7	9,6	13,0	-3,4	5,1
2010	35 520	90 335	130 456	-40 121	481	3,6	9,0	13,0	-4,0	5,3
2011	35 812	88 049	128 795	-40 746	433	3,6	8,8	12,9	-4,1	4,9
2012	36 161	90 269	129 440	-39 171	438	3,6	9,1	13,0	-3,9	4,9
2012. J	1 035	7 652	11 422	-3 770	40	1,2	9,1	13,6	-4,5	5,2
F	1 293	7 169	11 503	-4 334	31	1,6	9,1	14,6	-5,5	4,3
M	1 818	7 279	12 872	-5 593	53	2,2	8,7	15,3	-6,7	7,3
Á	2 075	7 040	11 126	-4 086	39	2,6	8,7	13,7	-5,0	5,5
Mj	4 118	7 318	10 298	-2 980	37	4,9	8,7	12,3	-3,5	5,1
Jú	4 258	7 227	9 930	-2 703	36	5,2	8,9	12,2	-3,3	5,0
Jl	4 661	8 045	10 708	-2 663	21	5,5	9,6	12,7	-3,2	2,6
A	6 237	8 258	10 153	-1 895	38	7,4	9,8	12,1	-2,3	4,6
Sz	4 910	8 067	9 528	-1 461	39	6,0	9,9	11,7	-1,8	4,8
O	2 279	7 704	10 338	-2 634	34	2,7	9,2	12,3	-3,1	4,4
N	1 397	7 141	10 096	-2 955	33	1,7	8,8	12,4	-3,6	4,6
D	2 080	7 369	11 466	-4 097	37	2,5	8,8	13,7	-4,9	5,0
2013. +/J	940	7 484	11 285	-3 801	32	1,1	8,9	13,4	-4,5	4,3
F	1 115	6 602	10 668	-4 066	34	1,5	8,7	14,0	-5,4	5,1
M	1 783	6 979	11 931	-4 952	37	2,1	8,3	14,2	-5,9	5,3
Á	2 239	6 422	10 900	-4 478	35	2,8	7,9	13,4	-5,5	5,5
Mj	4 252	7 002	9 684	-2 682	31	5,1	8,3	11,5	-3,2	4,4
Jú	4 125	7 220	9 809	-2 589	43	5,1	8,9	12,1	-3,2	6,0
2012. J–Jú	14 597	43 685	67 151	-23 466	236	3,0	8,9	13,6	-4,8	5,4
2013. +/J–Jú	14 454	41 709	64 277	-22 568	212	2,9	8,5	13,1	-4,6	5,1
Előző év azonos időszaka = 100,0 <i>Corresponding period of the previous year = 100.0</i>										
2013. +/J–Jú	99,0	95,5	95,7	96,2	89,8	99,5	96,0	96,2	96,7	94,1

+/ Előzetes, részben becült adatok. – Preliminary, partly estimated data.

Megjegyzés: a százalékos és viszonyszámok kiszámítása kerekítés nélküli adatok alapján történt.

Note: percentages and rates have been calculated on the basis of unrounded figures.

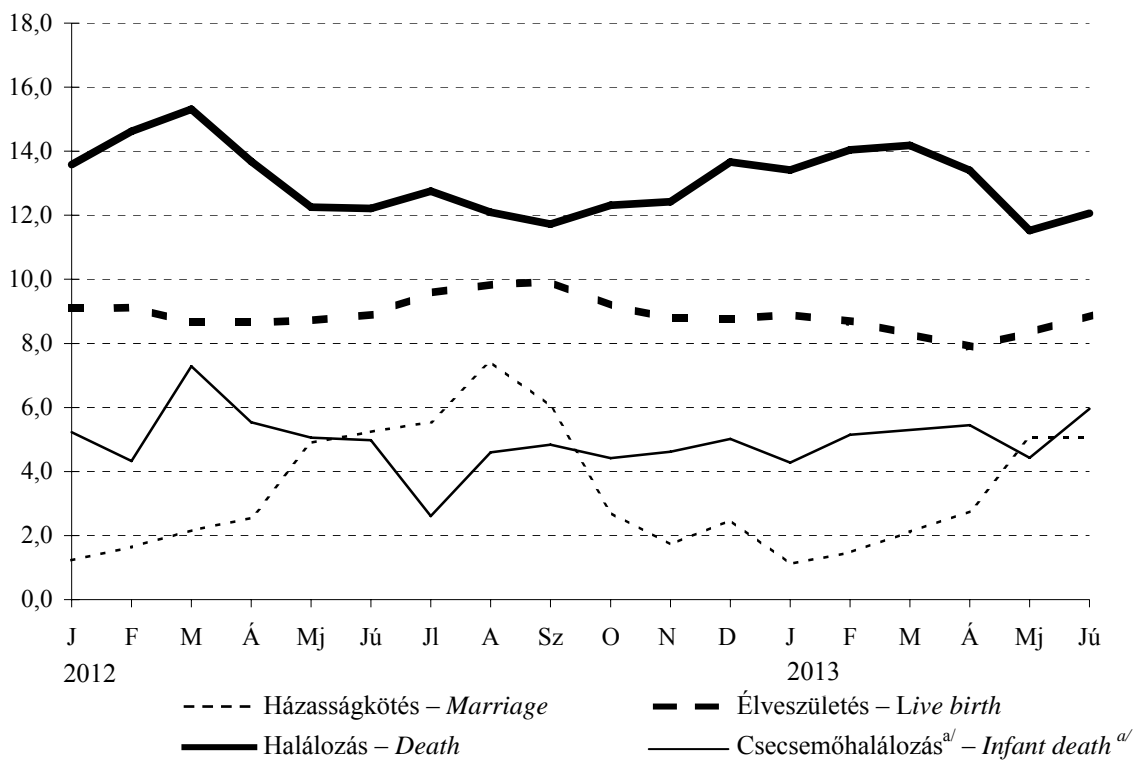
2. A természetes népmozgalom főbb adatai régióként
Main data of vital events by region

Régió <i>Region</i>	Házasságkötés <i>Marriage</i>	Élveszületés <i>Live birth</i>	Halálozás <i>Death</i>	Természetes szaporodás, fogyás (-) <i>Natural increase or decrease (-)</i>
2012. I. félév – <i>I. half of year 2012</i>				
Közép-Magyarország – <i>Central Hungary</i>	4 980	13 822	18 339	-4 517
Közép-Dunántúl – <i>Central Transdanubia</i>	1 652	4 695	7 018	-2 323
Nyugat-Dunántúl – <i>Western Transdanubia</i>	1 504	3 920	6 715	-2 795
Dél-Dunántúl – <i>Southern Transdanubia</i>	1 293	3 704	6 542	-2 838
Észak-Magyarország – <i>Northern Hungary</i>	1 451	5 288	8 899	-3 611
Észak-Alföld – <i>Northern Great Plain</i>	1 833	6 652	9 624	-2 972
Dél-Alföld – <i>Southern Great Plain</i>	1 737	5 114	9 754	-4 640
Ország összesen ^{a/} – <i>Total^{a/}</i>	14 597	43 685	67 151	-23 466
2013. I. félév ^{+/} – <i>I. half of year 2013^{+/}</i>				
Közép-Magyarország – <i>Central Hungary</i>	4 958	12 982	17 605	-4 623
Közép-Dunántúl – <i>Central Transdanubia</i>	1 594	4 373	7 018	-2 645
Nyugat-Dunántúl – <i>Western Transdanubia</i>	1 404	3 682	6 526	-2 844
Dél-Dunántúl – <i>Southern Transdanubia</i>	1 340	3 595	6 504	-2 909
Észak-Magyarország – <i>Northern Hungary</i>	1 342	5 122	8 433	-3 311
Észak-Alföld – <i>Northern Great Plain</i>	1 913	6 500	9 006	-2 506
Dél-Alföld – <i>Southern Great Plain</i>	1 745	4 988	8 969	-3 981
Ország összesen ^{a/} – <i>Total^{a/}</i>	14 454	41 709	64 277	-22 568
2013. I. félév ^{+/} a 2012. I. félév %-ában <i>I. half of year 2013^{+/} as a percentage of I. quarter of year 2012</i>				
Közép-Magyarország – <i>Central Hungary</i>	99,6	93,9	96,0	102,3
Közép-Dunántúl – <i>Central Transdanubia</i>	96,5	93,1	100,0	113,9
Nyugat-Dunántúl – <i>Western Transdanubia</i>	93,4	93,9	97,2	101,8
Dél-Dunántúl – <i>Southern Transdanubia</i>	103,6	97,1	99,4	102,5
Észak-Magyarország – <i>Northern Hungary</i>	92,5	96,9	94,8	91,7
Észak-Alföld – <i>Northern Great Plain</i>	104,4	97,7	93,6	84,3
Dél-Alföld – <i>Southern Great Plain</i>	100,5	97,5	92,0	85,8
Ország összesen ^{a/} – <i>Total^{a/}</i>	99,0	95,5	95,7	96,2

+/ Előzetes, részben becsült adatok. – *Preliminary, partly estimated data.*

a/ A területre nem bontható adatokkal együtt. – *Including data which can't be dissolved to regions.*

A természetes népmozgalom főbb adatai havonta, 2012 , 2013^{+/} (ezer lakosra)
Main data of vital events by months, 2012 , 2013^{+/} (per thousand population)



+/ Előzetes, részben becsült adatok. – Preliminary, partly estimated data.

a/ Ezer élveszületésre. – Per thousand live births.