



UGANDA BUREAU OF STATISTICS



CONSUMER PRICE INDEX

JULY 2013

Uganda Bureau of Statistics,
Plot 9, Colville Street
P.O. Box 7186,
Kampala
Tel: 0414 - 706000
Fax: 0414 - 237553
E-mail: ubos@ubos.org
Website: www.ubos.org

Contents

FOREWORD	III
TABLE 1: PRICE PERCENTAGE CHANGES BY CENTRE: JUNE AND JULY, 2013 (BASE: 2005/2006 = 100).....	3
TABLE 2: MONTHLY PRICE PERCENTAGE CHANGES BY GROUP JULY, 2013 (BASE: 2005/2006 = 100)	3
TABLE 3: COMPOSITE CONSUMER PRICE INDEX (CPI) (BASE: 2005/2006 =100).....	4
TABLE 4: COMPOSITE CPI BREAKDOWN BY MAJOR GROUPS,(BASE 2005/2006=100)	5
TABLE 5: COMPOSITE CPI BREAKDOWN BY MAJOR GROUP ANNUAL PERCENTAGE CHANGES.....	6
TABLE 6: COMPOSITE CPI FOR FOOD AND NON FOOD, (BASE 2005/2006=100)	7
TABLE 7: COMPOSITE CPI BREAKDOWN FOR FOOD CROPS, OTHER GOODS AND SERVICES,(BASE 2005/6=100)	8
TABLE 8: CONSUMER PRICE INDEX - KAMPALA HIGH INCOME (BASE: 2005/2006 =100).....	9
TABLE 9 : CONSUMER PRICE INDEX KAMPALA MIDDLE & LOW INCOME (BASE: 2005/2006 =100).....	10
TABLE 10: CONSUMER PRICE INDEX JINJA (BASE: 2005/2006 =100).....	11
TABLE 11: CONSUMER PRICE INDEX MBALE (BASE: 2005/2006 =100).....	12
TABLE 12: CONSUMER PRICE INDEX MASAKA (BASE: 2005/2006 =100).....	13
TABLE 13: CONSUMER PRICE INDEX MBARARA (BASE: 2005/2006 =100).....	14
TABLE 14: CONSUMER PRICE INDEX GULU (BASE: 2005/2006 =100).....	15
TABLE 15 : CONSUMER PRICE INDEX ARUA (BASE: 2005/2006 =100).....	16
TABLE 16: AVERAGE RETAIL MARKET PRICES (UG. SHS) FOR CPI COMMODITIES - PAGES 1-5	17

FOREWORD

This publication provides the monthly Consumer Price Indices for Uganda (Composite) and for the eight baskets of Kampala High Income, Kampala Low and Middle Income, Jinja, Mbale, Masaka, Mbarara, Gulu and Arua. All the baskets are for the urban households.

The current Consumer Price Index was rebased from (July 1997 to June 1998 = 100) to (July 2005 to June 2006 = 100) using weights derived from the 2005/2006 Uganda National Household Survey data. During the rebasing exercise, Kampala was decomposed into two baskets. In addition, Arua centre was incorporated into the Index. The number of elementary aggregates in the revised Index was increased from 125 to 276.

At the elementary aggregate level, the indices are computed using the Jevons (Geometric Mean) method for all items within the elementary aggregates. The modified Laspeyres index formula is used to compute higher level indices. The National CPI is computed as a weighted average of the eight baskets mentioned above.

Imelda Atai Musana (Mrs.)
Ag. EXECUTIVE DIRECTOR

Press Release

ANNUAL INFLATION RATES

The Annual Headline Inflation rate for the year ending July 2013 rose to 5.1% from the 3.6% registered for the year ended June 2013. The Annual Core (Underlying) Inflation rate increased from 5.8% for the year ended June 2013 to 6.4% for the year ending July 2013. The Annual Energy, Fuel and Utilities (EFU) Inflation declined to 0.3% for the year ending July 2013 from the 1.0% registered during the year ended June 2013. The Annual Food Crops Inflation rate was -0.3% for the year ending July 2013 compared to -6.2% that was recorded during the year ended June 2013 (Table 1)

ANNUAL HEADLINE INFLATION RATES BY CENTRE

Kampala High Income registered the highest Annual Inflation rate of 7.2% up from 6.6% recorded in June 2013. This was driven by high price levels for food, beverages, and clothing, rent and education charges. Mbarara registered the second highest Annual Inflation rate of 6.3% compared to a 5.7% recorded in June 2013. This was driven by high price levels for food, beverages, education charges and health service and other goods & services. Kampala middle and low registered the third highest Annual Inflation rate of 6.1% compared to a 3.3% recorded in June 2013. This was driven by high price levels for food, beverages, rent, charcoal, firewood, unmetered water and meals in restaurants. However, Arua recorded a negative Inflation rate of 4.9% from -5.4% in June 2013. The main drivers were low price levels for food, charcoal, firewood and cement. For other centres see Table 1.

MONTHLY INFLATION

The Monthly Headline Inflation for the month of July 2013 increased by 0.6% from the 0.5% decrease recorded in June 2013. In addition, the monthly Core Inflation went up by 0.4% from the 0.6% rise registered in June 2013. Similarly, the Monthly EFU Inflation increased by 4.2% in July 2013 from the 0.6% drop registered in June 2013. However, the Monthly Food Crops Inflation rose to 0.0% in July 2013 from the -6.0% in June 2013. (Table 1).

The increase was mainly attributed to the substantial increase in prices of matooke, sweet potatoes, passion fruits, pineapples, oranges, egg plants, bbugga, green pepper, cabbage, sugar and milk in most centres. This was mainly attributed to decreased food supplies on the market as a result of the long dry spell in most parts of the country. However, a reduction in prices was recorded for Irish potatoes, sweet bananas, tomatoes and beans. As a result, the overall monthly inflation for the Composite Food Group registered an increase of 0.4% (Table 6).

In the Non-Food Category, increase in prices were recorded for charcoal, firewood, kerosene, metered water, clothing and rental charges while prices for diesel and petrol went down in most centres.

FOOD AND NON-FOOD INFLATION RATES

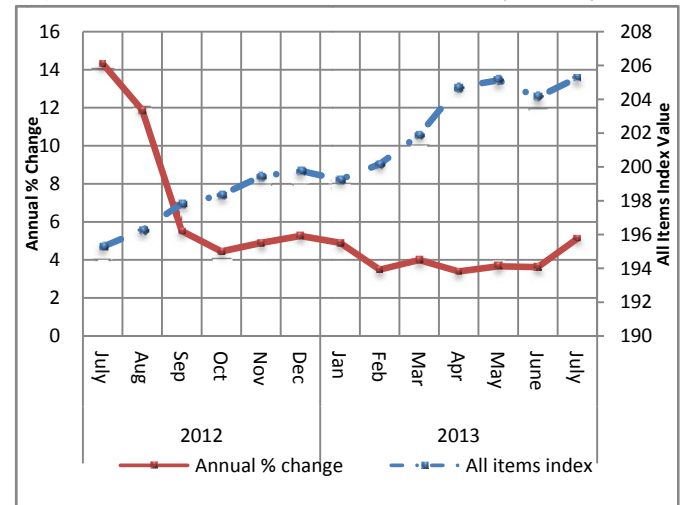
The Annual Food Inflation rate rose to 2.8% for the year ending July 2013 compared to the -1.4% recorded for the year ended June 2013. The Non-Food Inflation remained stable at 6.5% for the year ending July 2013 and the same rate was recorded for the year ended June 2013 (Table 6).

OTHER GOODS AND SERVICES INFLATION RATES

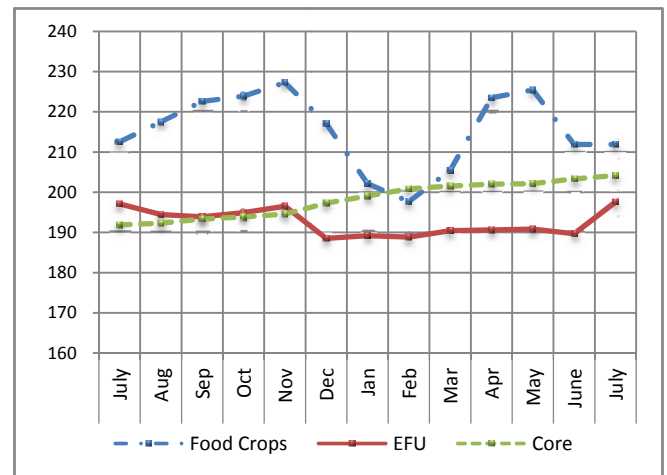
The Annual Inflation rate for Other Goods increased to 5.7% in July 2013 compared to 4.4% recorded in June 2013. For Services, the Annual Inflation rate recorded was 6.8% in July 2013 compared to 7.1% registered in June 2013 (Table 7).

Note: June 2013 figures were revised after education data analysis was completed in July 2013.

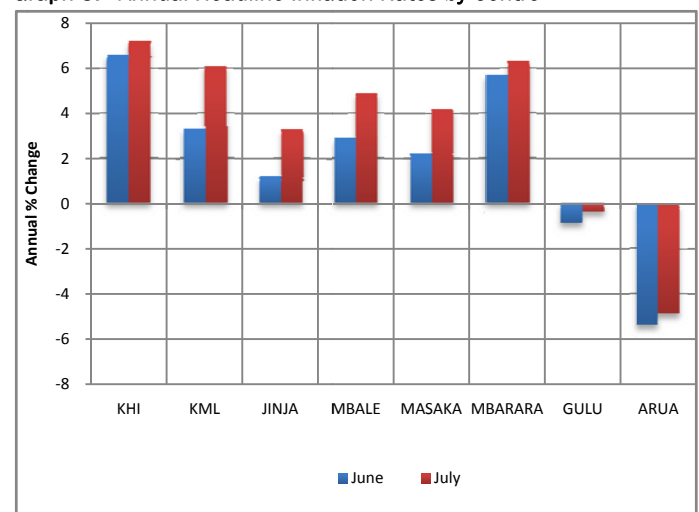
Graph 1: Headline Index and Annual Inflation Rates July 012- July 2013



Graph 2: Food Crops, Core and EFU Indices July 2012- July 2013



Graph 3: Annual Headline Inflation Rates by Centre



KHI: Kampala High Income
KML: Kampala Middle and Low income

Release calendar for CPI 2013

Month	Expected Date	Actual Date
January	31 st	31 st
February	28 th	28 th
March	28 th	28 th
April	30 th	30 th
May	31 st	31 st
June	28 th	28 th
July	31 st	31 st
August	30 th	
September	30 th	
October	31 st	
November	29 th	
December	31 st	

Table 1: Price percentage changes by Centre: June and July, 2013 (BASE: 2005/2006 = 100)

Centre	Headline inflation				Core inflation				Food crops and related items				Energy, Fuel & Utilities			
	<i>(All items)</i>				<i>(excl. Food Crops and EFU)</i>											
	Month of		Year ending		Month of		Year ending		Month of		Year ending		Month of		Year ending	
	June	July	June	July	June	July	June	July	June	July	June	July	June	July	June	July
COMPOSITE	-0.5	0.6	3.6	5.1	0.6	0.4	5.8	6.4	-6.0	0.0	-6.2	-0.3	-0.6	4.2	1.0	0.3
KHI	0.2	0.1	6.6	7.2	0.7	0.3	8.1	8.5	-3.8	-2.8	-1.5	0.5	-0.4	3.4	1.4	1.1
KML	-0.1	0.7	3.3	6.1	0.9	0.6	5.8	7.6	-5.7	0.0	-8.0	-0.2	-0.4	5.0	0.9	0.9
Jinja	-0.3	1.3	1.2	3.3	1.5	0.9	3.9	6.0	-8.4	2.2	-10.5	-8.2	-1.1	5.0	0.3	0.8
Mbale	0.5	-0.3	2.9	4.9	0.9	0.6	5.5	6.8	-1.1	-6.8	-8.8	-3.7	-1.2	3.4	0.8	0.4
Masaka	-2.4	1.6	2.2	4.2	-0.5	0.3	4.1	3.1	-12.9	9.3	-8.0	12.9	-0.8	2.6	1.1	-1.2
Mbarara	-1.5	1.5	5.7	6.3	0.6	0.3	7.4	5.8	-10.7	7.0	-1.2	10.5	-0.6	3.8	1.3	-3.1
Gulu	-1.6	-0.5	-0.9	-0.4	-1.0	-0.8	0.3	0.3	-3.5	-0.1	-5.2	-2.9	-1.6	4.8	0.1	-0.3
Arua	-1.7	-0.3	-5.4	-4.9	-0.5	0.7	-1.0	-0.5	-5.9	-4.4	-18.6	-18.4	0.1	7.7	1.3	0.8

Source: Uganda Bureau of Statistics

Table 2: Monthly price percentage changes by Group July, 2013 (BASE: 2005/2006 = 100)

ITEM/CENTRE	COMPOSITE	KHI	KML	JINJA	MBALE	MASAKA	MBARARA	GULU	ARUA
Food	0.4	-1.3	0.5	2.2	-2.1	4.3	4.0	-0.3	-1.5
Beverages & tobacco	0.5	0.1	-0.4	0.4	0.2	3.8	2.3	-2.2	3.7
Clothing & footwear	0.3	1.2	-0.4	0.4	0.3	-1.8	0.2	0.1	0.7
Rent, fuel & utilities	1.8	2.2	2.0	3.7	3.1	2.9	0.1	-1.8	-0.1
Household and personal goods	0.4	-0.8	1.1	0.3	0.6	0.4	1.2	0.8	0.9
Transport & communication	-0.3	-0.6	-0.6	1.1	-0.4	-0.7	0.8	0.0	0.0
Education	0.0	-0.1	0.0	0.4	-0.2	0.3	-0.1	0.0	-0.3
Health, Entertainment & others	0.4	0.3	1.4	-1.4	0.2	-0.4	0.3	0.6	0.3

Source: Uganda Bureau of Statistics

Note:

KHI: Kampala High Income

KML: Kampala Middle and Low income

Table 3: Composite Consumer Price Index (CPI) (Base: 2005/2006 =100)

	Food	Beverages and tobacco	Clothing and footwear	Rent, Fuel and Utilities	H.hold and personal goods	Transport and communication.	Education	Health ,entert. & Others	All items index	Monthly % change	Annual % change	
Weights	27.1558	4.7246	4.4279	14.8374	4.5009	12.8259	14.6940	16.8335	100.0000			
Calendar year												
2010	165.44	132.30	129.49	153.05	147.63	123.25	131.33	142.17	145.18		4.0	
2011	218.92	153.82	164.48	177.35	181.69	117.55	141.91	164.61	172.29		18.7	
2012	237.62	179.11	191.07	214.19	210.34	133.68	164.09	190.60	196.43		14.0	
Financial year												
2010/2011	183.92	138.59	139.44	159.30	159.86	115.01	135.21	151.04	153.39		6.5	
2011/2012	237.32	171.19	189.41	202.18	201.24	128.57	152.04	179.85	189.48		23.5	
2012/2013	235.79	190.46	190.07	219.35	214.99	136.38	170.96	199.20	200.18		5.6	
Monthly												
2010	July	156.33	129.93	128.69	156.11	146.16	128.48	131.76	142.47	143.79	-0.3	3.3
	Aug	157.64	130.07	129.80	156.64	148.92	128.61	131.90	143.16	144.52	0.5	1.7
	Sep	162.35	133.08	130.46	154.86	149.81	129.63	132.35	144.27	146.07	1.1	0.4
	Oct	167.49	138.62	130.37	155.06	151.16	110.20	132.40	145.58	145.53	-0.4	0.2
	Nov	173.44	139.18	135.02	155.68	151.99	108.67	132.49	146.83	147.37	1.3	1.4
	Dec	173.69	138.80	139.59	155.20	156.13	113.66	132.86	152.28	149.41	1.4	3.1
2011	Jan	179.53	140.13	140.02	157.78	159.63	110.19	133.06	152.20	151.20	1.2	5.0
	Feb	182.99	140.09	140.87	159.79	162.37	112.61	138.16	153.17	153.82	1.7	6.4
	Mar	204.72	142.27	143.07	162.46	166.80	106.22	138.20	155.07	160.25	4.2	11.2
	Apr	216.57	143.39	146.63	165.54	170.65	109.62	138.31	156.85	164.96	2.9	14.1
	May	218.86	143.75	152.54	165.41	175.84	109.72	138.80	159.86	166.81	1.1	16.0
	June	213.37	143.72	156.15	167.05	178.81	112.53	142.24	160.69	166.94	0.1	15.7
	July	219.89	145.63	162.12	169.40	182.53	113.22	143.46	164.29	170.81	2.3	18.8
	Aug	225.32	162.87	170.83	175.25	187.55	114.20	144.12	167.95	175.40	2.7	21.4
	Sep	244.19	167.83	178.73	195.23	194.12	128.09	146.49	173.05	187.46	6.9	28.3
	Oct	244.24	170.90	189.08	204.41	197.22	128.78	146.52	175.02	189.88	1.3	30.5
	Nov	243.47	172.33	193.08	202.84	200.28	129.95	146.61	176.43	190.12	0.1	29.0
	Dec	233.86	172.89	200.61	203.10	204.46	135.50	146.97	180.69	189.77	-0.2	27.0
2012	Jan	228.40	173.95	201.40	212.29	204.35	133.27	147.50	183.95	189.94	0.1	25.6
	Feb	233.54	175.15	201.03	215.72	206.66	131.41	158.67	184.76	193.40	1.8	25.7
	Mar	236.22	175.92	198.80	214.15	207.67	131.79	158.81	184.88	194.14	0.4	21.1
	Apr	249.14	176.71	197.80	213.71	208.68	132.37	158.59	187.35	198.00	2.0	20.0
	May	248.90	179.81	193.68	210.06	210.03	132.14	158.74	190.21	197.87	-0.1	18.6
	June	240.73	180.33	185.80	209.95	211.37	132.10	168.01	189.59	196.99	-0.4	18.0
	July	231.77	179.98	182.36	215.03	211.60	132.91	167.72	190.41	195.27	-0.9	14.3
	Aug	234.81	179.01	181.74	216.13	212.18	132.41	167.95	191.21	196.25	0.5	11.9
	Sep	237.23	178.11	182.92	215.27	213.05	133.25	170.69	194.25	197.82	0.8	5.5
	Oct	238.12	181.57	183.96	216.75	212.26	133.44	170.73	194.66	198.33	0.3	4.4
	Nov	238.64	181.21	190.75	215.92	212.78	136.16	170.82	196.68	199.44	0.6	4.9
	Dec	233.97	187.63	192.65	215.29	213.42	142.95	170.84	199.29	199.76	0.2	5.3
2013	Jan	228.39	194.87	192.50	220.51	215.30	136.65	170.80	202.09	199.25	-0.3	4.9
	Feb	228.84	197.13	191.28	224.21	215.79	136.67	171.63	202.89	200.15	0.5	3.5
	Mar	234.01	200.62	193.12	222.25	216.98	137.96	171.89	203.49	201.89	0.9	4.0
	Apr	242.75	200.94	195.73	224.02	218.86	138.02	171.83	204.24	204.73	1.4	3.4
	May	243.63	201.92	196.58	223.47	218.96	137.55	171.38	205.47	205.12	0.2	3.7
	Jun	237.32	202.50	197.28	223.40	218.68	138.55	175.21	205.73	204.12	-0.5	3.6
	July	238.23	203.58	197.82	227.42	219.51	138.21	175.22	206.63	205.28	0.6	5.1

Source: Uganda Bureau of Statistics.

Table 4: Composite CPI Breakdown By Major Groups,(Base 2005/2006=100)

		Monthly percentage changes								Annual percentage changes							
		Food Crops	Energy, Fuel & Utilities (EFU)	Core	All Items Index	Food Crops	Energy, Fuel & Utilities (EFU)	Core	All item index	Food Crops	Energy, Fuel & Utilities (EFU)	Core	All items index				
Weights		13.4511	4.9156	81.6333	100.0000												
Calendar year																	
	2010	156.41	151.11	142.83	145.18									1.5	1.2	4.8	4.0
	2011	201.91	166.71	167.48	172.29									29.1	10.3	17.3	18.7
	2012	221.46	192.64	192.10	196.43									9.7	16.0	14.7	14.0
Financial year																	
	2010/2011	176.95	158.14	149.02	153.39									8.0	6.0	6.3	6.5
	2011/2012	213.73	181.28	185.63	189.48									20.8	14.6	24.6	23.5
	2012/2013	215.57	192.07	197.67	200.18									0.9	6.0	6.5	5.6
Monthly																	
	2010	July	139.00	152.40	143.88	143.79	-4.9	1.0	0.3	-0.3	-2.5	1.3	4.6	3.3			
		Aug	144.18	153.12	143.85	144.52	3.7	0.5	0.0	0.5	-9.2	1.8	4.0	1.7			
		Sep	150.88	153.72	144.54	146.07	4.6	0.4	0.5	1.1	-17.6	2.1	4.2	0.4			
		Oct	158.51	156.83	142.53	145.53	5.1	2.0	-1.4	-0.4	-11.4	3.9	2.5	0.2			
		Nov	167.97	155.15	143.42	147.37	6.0	-1.1	0.6	1.3	-5.5	3.3	2.9	1.4			
		Dec	167.93	154.85	145.92	149.41	0.0	-0.2	1.7	1.4	-4.6	3.2	4.8	3.1			
	2011	Jan	172.94	156.52	147.20	151.20	3.0	1.1	0.9	1.2	1.5	8.6	5.6	5.0			
		Feb	173.61	158.66	150.08	153.82	0.4	1.4	2.0	1.7	6.9	9.7	6.0	6.4			
		Mar	203.88	161.74	152.73	160.25	17.4	1.9	1.8	4.2	29.1	10.4	7.8	11.2			
		Apr	221.26	163.82	155.50	164.96	8.5	1.3	1.8	2.9	39.3	8.9	9.6	14.1			
		May	220.19	164.51	157.83	166.81	-0.5	0.4	1.5	1.1	44.2	9.1	11.3	16.0			
		June	203.04	166.32	160.79	166.94	-7.8	1.1	1.9	0.1	39.0	10.3	12.1	15.7			
		July	197.74	168.89	166.26	170.81	-2.6	1.5	3.4	2.3	42.3	10.8	15.6	18.8			
		Aug	192.74	169.53	172.60	175.40	-2.5	0.4	3.8	2.7	33.7	10.7	20.0	21.4			
		Sep	209.43	172.25	184.37	187.46	8.7	1.6	6.8	6.9	38.8	12.1	27.6	28.3			
		Oct	214.48	172.75	186.47	189.88	2.4	0.3	1.1	1.3	35.3	10.1	30.8	30.5			
		Nov	211.47	172.71	187.35	190.12	-1.4	0.0	0.5	0.1	25.9	11.3	30.6	29.0			
		Dec	202.21	172.86	188.52	189.77	-4.4	0.1	0.6	-0.2	20.4	11.6	29.2	27.0			
	2012	Jan	196.23	193.35	188.51	189.94	-3.0	11.8	0.0	0.1	13.5	23.5	28.1	25.6			
		Feb	210.70	195.33	190.20	193.40	7.4	1.0	0.9	1.8	21.4	23.1	26.7	25.7			
		Mar	224.46	194.37	188.73	194.14	6.5	-0.5	-0.8	0.4	10.1	20.2	23.6	21.1			
		Apr	241.47	187.24	190.96	198.00	7.6	-3.7	1.2	2.0	9.1	14.3	22.8	20.0			
		May	237.88	188.28	191.33	197.87	-1.5	0.6	0.2	-0.1	8.0	14.5	21.2	18.6			
		June	225.91	187.73	192.26	196.99	-5.0	-0.3	0.5	-0.4	11.3	12.9	19.6	18.0			
		July	212.51	197.07	191.85	195.27	-5.9	5.0	-0.2	-0.9	7.5	16.7	15.4	14.3			
		Aug	217.48	194.44	192.31	196.25	2.3	-1.3	0.2	0.5	12.8	14.7	11.4	11.9			
		Sep	222.59	193.90	193.35	197.82	2.4	-0.3	0.5	0.8	6.3	12.6	4.9	5.5			
		Oct	223.88	194.91	193.84	198.33	0.6	0.5	0.3	0.3	4.4	12.8	4.0	4.4			
		Nov	227.28	196.50	194.58	199.44	1.5	0.8	0.4	0.6	7.5	13.8	3.9	4.9			
		Dec	217.07	188.51	197.26	199.76	-4.5	-4.1	1.4	0.2	7.3	9.0	4.6	5.3			
	2013	Jan	202.11	189.21	199.04	199.25	-6.9	0.4	0.9	-0.3	3.0	-2.1	5.6	4.9			
		Feb	197.67	188.82	200.84	200.15	-2.2	-0.2	0.9	0.5	-6.2	-3.3	5.6	3.5			
		Mar	205.41	190.43	201.54	201.89	3.9	0.9	0.3	0.9	-8.5	-2.0	6.8	4.0			
		Apr	223.48	190.60	202.01	204.73	8.8	0.1	0.2	1.4	-7.4	1.8	5.8	3.4			
		May	225.43	190.82	202.12	205.12	0.9	0.1	0.1	0.2	-5.2	1.3	5.6	3.7			
		Jun	211.89	189.69	203.34	204.12	-6.0	-0.6	0.6	-0.5	-6.2	1.0	5.8	3.6			
		July	211.85	197.59	204.15	205.28	0.0	4.2	0.4	0.6	-0.3	0.3	6.4	5.1			

Source: Uganda Bureau of Statistics.

Table 5: Composite CPI Breakdown by Major Group Annual Percentage Changes

	Food	Beverages and tobacco	Clothing and footwear	Rent, Fuel and utilities	H.hold and personal goods	Transport and communication.	Education	Health, Entert. & Others	All Items Index	
Weights	27.1558	4.7246	4.4279	14.8374	4.5009	12.8259	14.6940	16.8335	100.0000	
Calender Year										
2010	2.6	5.1	2.9	5.2	6.6	-1.4	6.6	9.7	4.0	
2011	32.5	16.1	26.7	15.8	22.9	-3.9	8.0	15.7	18.7	
2012	9.5	17.2	18.3	21.8	16.4	14.3	15.6	16.0	14.0	
Financial Year										
2010/11	8.9	7.9	9.5	7.2	11.8	-8.7	5.9	11.0	9.4	
2011/12	29.0	23.5	35.8	26.9	25.9	11.8	12.5	19.1	23.5	
2012/13	-0.6	11.3	0.3	8.5	6.8	6.1	12.2	10.8	5.6	
Monthly										
2010	July	-0.4	2.1	2.0	6.0	4.8	2.6	5.7	8.8	3.3
	Aug	-5.4	3.0	2.0	6.2	6.0	2.8	5.6	8.5	1.7
	Sep	-9.5	4.5	2.3	5.7	5.8	3.8	5.8	8.0	0.3
	Oct	-5.6	8.9	2.4	5.9	6.8	-12.3	5.8	8.4	0.2
	Nov	-1.7	9.1	4.8	5.7	7.2	-13.2	5.8	8.8	1.4
	Dec	-1.1	9.1	6.7	7.4	8.9	-10.1	6.1	12.4	3.1
2011	Jan	3.6	8.9	8.7	8.7	11.5	-11.2	6.4	11.7	5.0
	Feb	8.8	8.3	11.3	5.7	12.8	-9.7	5.0	11.8	6.4
	Mar	23.7	9.3	13.7	7.1	15.7	-15.5	5.1	12.8	11.2
	Apr	30.8	10.3	16.5	9.5	17.7	-14.6	5.3	13.1	14.1
	May	35.3	10.8	21.5	9.9	21.0	-14.7	5.7	14.3	16.0
	June	33.4	10.6	22.7	8.9	22.8	-12.4	8.2	13.0	15.7
	July	40.7	12.1	26.0	8.5	24.9	-11.9	8.9	15.3	18.8
	Aug	42.9	25.2	31.6	11.9	25.9	-11.2	9.3	17.3	21.4
	Sep	50.4	26.1	37.0	26.1	29.6	-1.2	10.7	20.0	28.3
	Oct	45.8	23.3	45.0	31.8	30.5	16.9	10.7	20.2	30.5
	Nov	40.4	23.8	43.0	30.3	31.8	19.6	10.7	20.2	29.0
	Dec	34.6	24.6	43.7	30.9	31.0	19.2	10.6	18.7	27.0
2012	Jan	27.2	24.1	43.8	34.5	28.0	20.9	10.9	20.9	25.6
	Feb	27.6	25.0	42.7	35.0	27.3	16.7	14.8	20.6	25.7
	Mar	15.4	23.6	39.0	31.8	24.5	24.1	14.9	19.2	21.1
	Apr	15.0	23.2	34.9	29.1	22.3	20.8	14.7	19.4	20.0
	May	13.7	25.1	27.0	27.0	19.4	20.4	14.4	19.0	18.6
	June	12.8	25.5	19.0	25.7	18.2	17.4	18.1	18.0	18.0
	July	5.4	23.6	12.5	26.9	15.9	17.4	16.9	15.9	14.3
	Aug	4.2	9.9	6.4	23.3	13.1	15.9	16.5	13.8	11.9
	Sep	-2.8	6.1	2.3	10.3	9.7	4.0	16.5	12.3	5.5
	Oct	-2.5	6.2	-2.7	6.0	7.6	3.6	16.5	11.2	4.4
	Nov	-2.0	5.2	-1.2	6.4	6.2	4.8	16.5	11.5	4.9
	Dec	0.0	8.5	-4.0	6.0	4.4	5.5	16.2	10.3	5.3
2013	Jan	0.0	12.0	-4.4	3.9	5.4	2.5	15.8	9.9	4.9
	Feb	-2.0	12.6	-4.8	3.9	4.4	4.0	8.2	9.8	3.5
	Mar	-0.9	14.0	-2.9	3.8	4.5	4.7	8.2	10.1	4.0
	Apr	-2.6	13.7	-1.0	4.8	4.9	4.3	8.3	9.0	3.4
	May	-2.1	12.3	1.5	6.4	4.3	4.1	8.0	8.0	3.7
	Jun	-1.4	12.3	6.2	6.4	3.5	4.9	4.3	8.5	3.6
	July	2.8	13.1	8.5	5.8	3.7	4.0	4.5	8.5	5.1

Source: Uganda Bureau of Statistics.

Table 6: Composite CPI for Food and Non Food, (Base 2005/2006=100)

	Food	Non Food	All items index	Monthly percentage changes			Annual percentage changes		
				Food	Non Food	All items index	Food	Non Food	All items index
Weights	27.1558	72.8442	100.0000						
Calendar year									
2010	165.44	137.77	145.18				2.6	5.4	4.0
2011	218.92	154.63	172.29				32.5	12.2	18.7
2012	237.62	180.46	196.43				8.5	16.7	14.0
Financial year									
2010/2011	183.92	142.14	153.39				9.3	5.7	6.5
2011/2012	237.32	171.04	189.48				29.0	20.3	23.5
2012/2013	235.79	186.34	200.18				-0.6	8.9	5.6
Monthly									
2010									
July	156.33	139.15	143.79	-2.3	0.5	-0.3	-0.4	5.6	3.3
Aug	157.64	139.77	144.52	0.8	0.4	0.5	-5.4	5.8	1.7
Sep	162.35	140.18	146.07	3.0	0.3	1.1	-9.5	5.7	0.4
Oct	167.49	137.58	145.53	3.2	-1.9	-0.4	-5.6	3.6	0.2
Nov	173.44	138.05	147.37	3.6	0.3	1.3	-1.7	3.5	1.4
Dec	173.69	140.65	149.41	0.1	1.9	1.4	-1.1	5.5	3.1
2011									
Jan	179.53	141.01	151.20	3.4	0.3	1.2	3.6	6.0	5.0
Feb	182.99	143.23	153.82	1.9	1.6	1.7	8.8	5.4	6.4
Mar	204.72	143.68	160.25	11.9	0.3	4.2	23.7	5.4	11.2
Apr	216.57	145.84	164.96	5.8	1.5	2.9	30.8	6.5	14.1
May	218.86	147.27	166.81	1.1	1.0	1.1	35.3	7.4	16.0
June	213.37	149.32	166.94	-2.5	1.4	0.1	33.4	7.9	15.7
July	219.89	151.85	170.81	3.1	1.7	2.3	40.7	9.1	18.8
Aug	225.32	156.17	175.40	2.5	2.8	2.7	42.9	11.7	21.4
Sep	244.19	165.63	187.46	8.4	6.1	6.9	50.4	18.2	28.3
Oct	244.24	169.04	189.88	0.0	2.1	1.3	45.8	22.9	30.5
Nov	243.47	169.71	190.12	-0.3	0.4	0.1	40.4	22.9	29.0
Dec	233.86	172.83	189.77	-3.9	1.8	-0.2	34.6	22.9	27.0
2012									
Jan	228.40	175.08	189.94	-2.3	1.3	0.1	27.2	24.2	25.6
Feb	233.54	178.06	193.40	2.3	1.7	1.8	27.6	24.3	25.7
Mar	236.22	177.79	194.14	1.1	-0.2	0.4	15.4	23.7	21.1
Apr	249.14	178.29	198.00	5.5	0.3	2.0	15.0	22.3	20.0
May	248.90	178.25	197.87	-0.1	0.0	-0.1	13.7	21.0	18.6
June	240.73	179.74	196.99	-3.3	0.8	-0.4	12.8	20.4	18.0
July	231.77	180.76	195.27	-3.7	0.6	-0.9	5.4	19.0	14.3
Aug	234.81	181.10	196.25	1.3	0.2	0.5	4.2	16.0	11.9
Sep	237.23	182.37	197.82	1.0	0.7	0.8	-2.8	10.1	5.5
Oct	238.12	183.07	198.33	0.4	0.4	0.3	-2.5	8.3	4.4
Nov	238.64	184.37	199.44	0.2	0.7	0.6	-2.0	8.6	4.9
Dec	233.97	186.65	199.76	-2.0	1.2	0.2	0.0	8.0	5.3
2013									
Jan	228.84	188.83	200.15	-2.4	0.6	-0.3	0.0	7.2	4.9
Feb	234.01	189.33	201.89	0.2	0.6	0.5	-2.0	6.0	3.5
Mar	242.75	190.10	204.73	2.3	0.3	0.9	-0.9	6.5	4.0
Apr	243.63	190.31	205.12	3.7	0.4	1.4	-2.6	6.6	3.4
May	237.32	191.40	204.12	0.4	0.1	0.2	-2.1	6.8	3.7
Jun	238.23	192.53	205.28	-2.6	0.6	-0.5	-1.4	6.5	3.6
July	228.84	188.83	200.15	0.4	0.6	0.6	2.8	6.5	5.1

Source: Uganda Bureau of Statistics.

Table 7: Composite CPI Breakdown For Food Crops, Other Goods and Services,(Base 2005/6=100)

		Monthly percentage changes								Annual percentage changes				
		Food Crops	Other Goods	Services	All items index	Food Crops	Other Goods	Services	All item index	Food Crops	Other Goods	Services	All items index	
Weights		13.4511	40.7911	45.7578	100.0000									
Calendar year														
	2010	156.41	152.60	135.20	145.18					1.5	4.4	5.2	4.0	
	2011	201.91	193.83	143.57	172.29					29.1	27.0	6.2	18.7	
	2012	221.46	220.78	166.45	196.43					9.7	13.9	15.9	14.0	
Financial year														
	2010/2011	176.95	163.69	136.93	153.39					8.0	9.5	3.2	6.5	
	2011/2012	213.73	218.33	155.81	189.48					20.8	33.4	13.8	23.5	
	2012/2013	215.57	224.57	172.95	200.18					0.9	2.9	11.0	5.6	
Monthly														
	2010	July	139.00	152.85	137.14	143.79	-4.9	0.5	0.3	-0.3	-2.5	3.7	5.7	3.3
		Aug	144.18	152.63	137.38	144.52	3.7	-0.1	0.2	0.5	-9.2	2.8	5.7	1.7
		Sep	150.88	153.41	138.04	146.07	4.6	0.5	0.5	1.1	-17.6	3.1	5.7	0.4
		Oct	158.51	155.50	132.94	145.53	5.1	1.4	-3.7	-0.4	-11.4	4.6	1.3	0.2
		Nov	167.97	156.69	133.10	147.37	6.0	0.8	0.1	1.3	-5.5	5.1	1.3	1.4
		Dec	167.93	157.61	136.39	149.41	0.0	0.6	2.5	1.4	-4.6	6.3	3.3	3.1
	2011	Jan	172.94	161.60	135.42	151.20	3.0	2.5	-0.7	1.2	1.5	8.5	3.1	5.0
		Feb	173.61	164.92	137.69	153.82	0.4	2.0	1.7	1.7	6.9	9.5	2.8	6.4
		Mar	203.88	171.64	136.47	160.25	17.4	4.1	-0.9	4.2	29.1	13.9	1.7	11.2
		Apr	221.26	175.48	138.24	164.96	8.5	2.2	1.3	2.9	39.3	16.6	2.1	14.1
		May	220.19	179.07	139.26	166.81	-0.5	2.0	0.7	1.1	44.2	19.5	2.5	16.0
		Jun	203.04	182.91	141.09	166.94	-7.8	2.1	1.3	0.1	39.0	20.3	3.2	15.7
		July	197.74	192.52	142.28	170.81	-2.6	5.2	0.8	2.3	42.3	26.0	3.7	18.8
		Aug	192.74	203.47	144.01	175.40	-2.5	5.7	1.2	2.7	33.7	33.3	4.8	21.4
		Sep	209.43	221.74	149.71	187.46	8.7	9.0	4.0	6.9	38.8	44.5	8.5	28.3
		Oct	214.48	223.93	151.54	189.88	2.4	1.0	1.2	1.3	35.3	44.0	14.0	30.5
		Nov	211.47	224.92	152.12	190.12	-1.4	0.4	0.4	0.1	25.9	43.5	14.3	29.0
		Dec	202.21	223.82	155.02	189.77	-4.4	-0.5	1.9	-0.2	20.4	42.0	13.7	27.0
	2012	Jan	196.23	223.06	157.96	189.94	-3.0	-0.3	1.9	0.1	13.5	38.0	16.6	25.6
		Feb	210.70	222.50	162.20	193.40	7.4	-0.2	2.7	1.8	21.4	34.9	17.8	25.7
		Mar	224.46	219.38	162.26	194.14	6.5	-1.4	0.0	0.4	10.1	27.8	18.9	21.1
		Apr	241.47	222.17	162.96	198.00	7.6	1.3	0.4	2.0	9.1	26.6	17.9	20.0
		May	237.88	221.97	163.62	197.87	-1.5	-0.1	0.4	-0.1	8.0	24.0	17.5	18.6
		Jun	225.91	220.49	166.07	196.99	-5.0	-0.7	1.5	-0.4	11.3	20.5	17.7	18.0
		July	212.51	218.76	167.90	195.27	-5.9	-0.8	1.1	-0.9	7.5	13.6	18.0	14.3
		Aug	217.48	219.27	168.12	196.25	2.3	0.2	0.1	0.5	12.8	7.8	16.7	11.9
		Sep	222.59	219.44	169.93	197.82	2.4	0.1	1.1	0.8	6.3	-1.0	13.5	5.5
		Oct	223.88	220.17	170.45	198.33	0.6	0.3	0.3	0.3	4.4	-1.7	12.5	4.4
		Nov	227.28	219.98	171.99	199.44	1.5	-0.1	0.9	0.6	7.5	-2.2	13.1	4.9
		Dec	217.07	222.11	173.98	199.76	-4.5	1.0	1.2	0.2	7.3	-0.8	12.2	5.3
	2013	Jan	202.11	225.75	173.96	199.25	-6.9	1.6	0.0	-0.3	3.0	1.2	10.1	4.9
		Feb	197.67	229.22	174.15	200.15	-2.2	1.5	0.1	0.5	-6.2	3.0	7.4	3.5
		Mar	205.41	230.32	174.66	201.89	3.9	0.5	0.3	0.9	-8.5	5.0	7.6	4.0
		Apr	223.48	230.02	175.92	204.73	8.8	-0.1	0.7	1.4	-7.4	3.5	7.9	3.4
		May	225.43	229.57	176.37	205.12	0.9	-0.2	0.3	0.2	-5.2	3.4	7.8	3.7
		Jun	211.89	230.21	177.91	204.12	-6.0	0.3	0.9	-0.5	-6.2	4.4	7.1	3.6
		July	211.85	231.21	179.36	205.28	0.0	0.4	0.8	0.6	-0.3	5.7	6.8	5.1

Source: Uganda Bureau of Statistics.

Table 8: Consumer Price Index - Kampala High Income (Base: 2005/2006 =100)

		Food	Beverages and tobacco	Clothing and footwear	Rent, Fuel and utilities	H.hold and personal goods	Transport and communication.	Educational	Health, entert. & Others	All items index	Monthly % change	Annual % change	
Weights		20.0031	2.7960	5.0827	15.7135	4.0389	14.1332	18.7364	19.4960	100.0000			
Calendar year													
2010		164.86	133.41	122.81	149.49	137.64	123.57	119.82	141.99	139.60		5.0	
2011		211.79	154.95	150.91	175.33	163.67	117.91	130.89	172.28	163.30		17.0	
2012		231.30	177.57	190.86	220.50	190.77	133.33	151.69	201.11	189.76		16.2	
Financial year													
2010/2011		182.11	140.81	129.10	153.84	148.55	115.59	123.42	154.46	146.67		6.8	
2011/2012		229.07	170.36	180.60	206.77	180.41	127.23	139.62	190.35	180.79		23.3	
2012/2013		231.14	186.58	194.53	226.45	197.71	139.54	159.54	209.72	195.41		8.1	
Monthly													
2010	July	156.14	131.16	122.78	150.74	138.77	128.48	119.90	141.60	138.66	0.1	4.7	
	Aug	157.42	130.97	122.96	153.14	140.44	128.67	119.78	142.48	139.54	0.6	4.0	
	Sep	162.23	132.30	122.69	150.87	140.60	130.09	120.22	142.76	140.51	0.7	1.4	
	Oct	166.27	140.27	123.36	151.74	142.91	109.17	120.27	142.95	138.90	(1.1)	1.2	
	Nov	174.24	140.20	125.20	151.55	143.73	107.84	120.30	146.90	141.18	1.6	2.5	
	Dec	176.12	142.07	129.09	150.67	147.68	117.66	120.72	161.79	146.19	3.6	6.4	
	2011	Jan	180.82	143.20	129.27	152.31	149.43	111.51	121.14	159.78	146.32	0.1	6.8
		Feb	184.64	145.68	130.52	153.55	151.83	113.97	127.01	160.06	149.01	1.8	7.3
		Mar	198.12	146.28	130.83	154.97	152.86	106.17	127.01	161.08	151.10	1.4	9.3
		Apr	212.33	145.43	134.37	158.15	155.45	110.66	126.87	161.99	155.49	2.9	12.1
		May	212.09	145.59	138.52	158.52	158.58	110.06	126.98	164.88	156.34	0.5	12.7
		June	204.88	146.52	139.67	159.89	160.29	112.81	130.87	167.21	156.84	0.3	13.2
July		208.81	146.73	148.73	160.74	163.87	113.00	132.29	174.20	160.03	2.0	15.4	
Aug		215.57	163.36	158.01	169.51	167.62	112.50	132.67	176.67	164.33	2.7	17.8	
Sep		231.77	165.92	160.48	208.22	172.56	128.93	136.51	182.25	178.18	8.4	26.8	
Oct		234.63	169.04	172.93	209.85	174.51	129.33	136.21	182.87	179.93	1.0	29.5	
Nov		233.11	171.30	177.79	208.96	176.94	128.45	136.51	182.99	179.84	(0.0)	27.4	
Dec		224.75	170.29	189.85	209.25	180.07	137.47	136.65	193.37	182.25	1.3	24.7	
2012	Jan	225.57	175.65	191.01	221.13	183.69	131.76	136.67	197.45	184.63	1.3	26.2	
	Feb	233.30	175.35	196.08	224.24	184.88	127.63	142.71	198.02	187.62	1.6	25.9	
	Mar	228.85	172.91	195.95	221.74	186.66	127.35	142.90	198.06	186.34	-0.7	23.3	
	Apr	240.39	173.51	197.10	219.35	190.30	128.78	142.63	198.20	188.67	1.3	21.3	
	May	241.30	180.24	196.97	214.74	190.51	130.79	142.90	200.70	189.15	0.3	21.0	
	June	230.82	180.02	182.34	213.57	193.33	130.77	156.81	199.41	188.58	-0.3	20.2	
	July	223.09	179.71	181.61	219.53	190.94	131.11	155.65	200.11	187.79	-0.4	17.4	
	Aug	226.13	177.49	184.56	219.90	190.93	132.38	155.77	200.72	188.87	0.6	14.9	
	Sep	229.99	176.14	185.56	222.84	192.67	133.14	160.76	203.77	191.82	1.6	7.7	
	Oct	233.48	179.15	187.39	223.50	193.14	133.71	161.06	203.50	192.91	0.6	7.2	
	Nov	231.92	176.63	194.89	223.84	195.40	140.12	161.22	204.51	194.18	0.7	8.0	
	Dec	230.74	183.98	196.84	221.60	196.76	152.21	161.22	208.93	196.53	1.2	7.8	
2013	Jan	225.03	188.30	197.38	231.91	197.85	141.60	160.48	212.92	196.33	-0.1	6.3	
	Feb	223.65	191.29	197.99	232.78	198.88	141.15	158.64	215.10	196.37	0.0	4.7	
	Mar	230.24	196.57	198.23	232.52	199.98	142.06	158.81	215.10	198.01	0.8	6.3	
	Apr	240.13	196.20	202.45	231.06	204.31	142.32	158.99	215.93	200.37	1.2	6.2	
	May	240.74	196.79	202.49	230.11	205.38	142.04	158.50	218.02	200.68	0.2	6.1	
	Jun	238.54	196.70	205.01	227.77	206.32	142.45	163.37	218.02	201.01	0.2	6.6	
	July	235.47	196.98	207.56	232.83	204.60	141.65	163.24	218.76	201.26	0.1	7.2	

Source: Uganda Bureau of Statistics.

Table 9 : Consumer Price Index Kampala Middle & Low Income (Base: 2005/2006 =100)

		Food	Beverages and tobacco	Clothing and footwear	Rent, Fuel and utilities	H.hold and personal goods	Transport and communication.	Education	Health, entert.& Others	All items index	Monthly % change	Annual % change
Weights		28.0629	5.4108	3.8659	17.3887	5.1247	12.4591	11.0069	16.6810	100.0000		
Calendar year												
2010		164.28	129.66	133.17	142.77	153.02	123.78	122.36	141.18	143.37		4.2
2011		217.86	150.47	193.70	162.01	192.06	113.14	134.30	152.05	169.03		17.9
2012		229.67	176.78	217.79	188.07	223.47	129.59	154.67	175.03	188.96		11.8
Financial year												
2010/2011		183.08	135.02	150.98	146.66	166.15	113.22	126.48	146.05	150.93		6.3
2011/2012		234.52	169.30	227.12	181.95	214.64	124.67	143.12	162.48	184.78		22.4
2012/2013		225.33	188.26	207.73	191.16	225.74	130.68	162.52	185.73	191.41		3.6
Monthly												
2010	July	158.22	128.34	130.54	145.12	149.87	129.56	121.78	143.85	142.85	0.0	4.2
	Aug	159.07	127.74	132.09	144.59	156.05	130.19	122.15	143.85	143.46	0.4	2.6
	Sep	160.96	129.32	133.75	143.50	155.90	130.43	122.61	144.13	144.07	0.4	0.7
	Oct	166.37	135.11	133.03	144.70	157.18	108.89	122.91	144.27	143.52	-0.4	0.2
	Nov	171.71	136.54	144.87	143.42	156.65	108.37	123.30	144.24	145.27	1.2	1.8
	Dec	169.89	135.65	152.05	144.65	160.38	114.42	123.60	144.23	146.18	0.6	2.1
2011	Jan	179.00	135.73	152.15	147.69	165.03	107.66	123.80	144.86	148.80	1.8	4.9
	Feb	180.09	133.11	154.74	147.79	167.72	110.40	130.64	144.92	150.32	1.0	5.0
	Mar	206.67	138.03	157.43	149.04	173.01	101.59	130.31	146.87	157.83	5.0	10.6
	Apr	215.58	140.40	162.81	150.94	177.76	104.42	130.98	149.79	162.16	2.7	13.5
	May	216.98	140.11	175.45	149.29	185.22	104.18	131.54	150.30	163.24	0.7	15.3
	June	212.47	140.17	182.81	149.25	189.02	108.57	134.14	151.30	163.45	0.1	14.5
	July	217.47	139.44	189.58	154.39	192.40	108.70	135.34	151.68	166.35	1.8	16.5
	Aug	222.62	160.80	203.76	160.27	199.47	108.92	136.21	153.78	171.35	3.0	19.4
	Sep	243.83	165.23	221.88	175.41	207.47	123.46	139.41	156.42	183.90	7.3	27.6
	Oct	242.24	170.33	237.85	191.10	213.18	123.90	139.65	157.60	187.64	2.0	30.7
	Nov	243.00	170.57	239.93	181.90	214.58	124.00	139.31	158.03	186.47	-0.6	28.4
	Dec	234.42	171.72	246.03	187.06	219.90	131.92	140.30	159.05	186.79	0.2	27.8
2012	Jan	225.21	171.43	244.07	192.58	217.32	130.30	140.61	163.01	185.44	-0.7	24.6
	Feb	227.34	174.00	239.93	193.69	223.49	129.75	147.21	163.01	187.18	0.9	24.5
	Mar	234.80	178.03	236.70	191.27	220.54	130.06	146.53	163.01	188.76	0.8	19.6
	Apr	247.34	175.96	235.46	190.47	219.42	130.52	146.22	170.28	193.16	2.3	19.1
	May	242.19	176.28	220.58	182.32	222.51	126.93	147.22	176.63	190.62	-1.3	16.8
	June	233.80	177.83	209.63	182.98	225.36	127.58	159.47	177.30	189.73	-0.5	16.1
	July	222.49	175.31	201.98	182.87	226.84	127.54	158.86	177.29	186.10	-1.9	11.9
	Aug	225.19	176.17	199.99	187.86	227.31	127.46	159.08	177.28	187.73	0.9	9.6
	Sep	223.53	174.73	201.79	187.47	227.64	127.67	163.36	180.52	188.25	0.3	2.4
	Oct	224.47	177.91	201.09	187.92	225.07	127.84	162.60	180.62	188.56	0.2	0.5
	Nov	227.18	178.75	211.19	189.30	224.42	129.92	162.44	185.52	191.02	1.3	2.4
	Dec	222.55	184.92	211.12	188.15	222.56	139.49	162.40	185.79	190.99	0.0	2.2
2013	Jan	219.45	194.32	210.39	194.06	224.88	129.64	163.36	189.13	191.18	0.1	3.1
	Feb	220.78	195.67	206.72	193.60	225.87	128.51	162.84	189.58	191.33	0.1	2.2
	Mar	224.24	197.87	210.62	192.86	226.46	131.79	163.07	190.39	193.05	0.9	2.3
	Apr	232.83	199.70	212.92	196.20	228.45	132.29	162.89	190.80	196.44	1.8	1.7
	May	234.07	200.22	212.35	194.68	225.55	132.14	162.28	190.84	196.30	-0.1	3.0
	Jun	227.22	203.52	212.61	198.92	224.65	133.87	167.07	190.97	196.02	-0.1	3.3
	July	228.26	202.74	211.81	202.92	227.05	133.07	167.16	193.68	197.42	0.7	6.1

Source: Uganda Bureau of Statistics.

Table 10: Consumer Price Index JINJA (Base: 2005/2006 =100)

		Food	Beverages and tobacco	Clothing and footwear	Rent, Fuel and utilities	H.hold and personal goods	Transport and communication.	Educational	Health, entert. & Others	All items index	Monthly % change	Annual % change	
Weights		33.027	3.3065	3.9611	10.5877	4.9449	13.7220	15.0840	15.3664	100.00			
Calendar year													
	2010	169.40	128.96	133.38	162.82	166.28	115.96	160.31	142.96	153.02		3.7	
	2011	236.28	155.39	158.09	192.92	206.89	102.62	166.95	173.57	186.03		21.6	
	2012	254.71	181.34	180.68	228.56	242.33	118.20	190.27	188.40	207.33		11.4	
Financial year													
	2010/2011	193.53	137.65	142.63	172.23	180.86	103.31	163.49	157.53	164.34		8.0	
	2011/2012	254.30	173.59	172.85	217.57	230.18	113.30	177.50	182.99	201.43		22.6	
	2012/2013	253.69	198.29	188.82	235.03	248.88	120.17	196.15	196.33	211.26		4.9	
Monthly													
	2010												
		July	156.65	125.24	133.57	166.40	162.62	122.72	163.74	143.60	150.43	-2.3	3.0
		Aug	158.40	126.74	135.02	165.78	164.07	122.89	163.74	141.86	150.88	0.3	1.1
		Sept	160.86	134.85	135.71	166.07	167.47	123.41	163.01	145.50	152.71	1.2	-1.5
		Oct	165.56	136.34	135.14	169.08	169.29	99.02	162.78	153.00	152.47	-0.2	-0.2
		Nov	174.64	139.11	137.88	169.42	172.87	99.58	162.65	151.91	155.77	2.2	1.4
		Dec	178.34	139.15	141.29	167.28	175.51	100.20	163.27	152.18	157.25	1.0	2.6
	2011												
		Jan	185.33	136.08	144.65	170.66	181.98	100.08	163.49	153.46	160.48	2.1	5.1
		Feb	185.08	133.70	141.42	174.08	182.77	101.04	163.00	162.38	162.02	1.0	5.9
		Mar	228.85	137.67	146.38	178.35	188.65	89.70	162.68	168.09	176.82	9.1	16.2
		Apr	236.69	145.42	149.65	177.92	196.67	92.46	161.59	171.08	180.82	2.3	18.5
		May	243.83	149.15	153.49	180.02	203.64	92.54	162.57	175.16	184.81	2.2	21.2
		June	248.08	148.32	157.32	181.74	204.77	96.06	169.41	172.13	187.62	1.5	21.9
		July	250.32	145.06	155.92	185.72	205.74	96.58	169.37	173.64	188.97	0.7	25.6
		Aug	243.16	162.64	159.00	196.03	213.35	98.64	170.21	175.88	189.53	0.3	25.6
		Sept	262.27	174.29	164.79	210.50	216.16	113.90	169.82	178.71	200.59	5.8	31.4
		Oct	249.31	181.77	170.77	219.19	219.90	114.59	169.95	183.17	198.70	-0.9	30.3
		Nov	252.21	177.16	174.55	221.67	230.37	115.10	171.20	184.39	200.88	1.1	29.0
		Dec	250.18	173.44	179.15	219.13	238.69	120.76	170.16	184.80	201.10	0.1	27.9
	2012												
		Jan	243.44	172.64	183.85	231.99	233.68	117.93	170.60	184.54	199.78	-0.7	24.5
		Feb	253.83	172.91	181.03	231.50	236.56	114.57	183.67	183.69	204.58	2.4	26.3
		Mar	258.86	177.64	177.37	225.82	242.64	116.73	185.46	183.69	206.52	0.9	16.8
		Apr	260.45	177.71	175.16	222.42	239.40	116.93	185.25	183.93	206.47	0.0	14.2
		May	259.45	183.14	174.71	221.80	241.68	117.04	184.56	189.58	207.13	0.3	12.1
		June	268.16	184.63	177.94	225.09	243.96	116.76	199.77	189.88	212.95	2.8	13.5
		July	260.82	182.21	175.85	232.44	245.47	117.67	199.55	190.17	211.35	-0.8	11.8
		Aug	248.00	180.77	174.24	224.23	247.03	117.92	200.74	187.25	205.98	-2.5	8.7
		Sept	252.64	179.95	179.64	225.97	245.41	118.93	192.44	189.89	207.09	0.5	3.2
		Oct	253.26	192.39	181.06	237.43	243.46	119.43	194.20	191.36	209.44	1.1	5.4
		Nov	247.80	187.26	190.73	233.06	243.19	119.12	193.49	191.37	207.23	-1.1	3.2
		Dec	249.78	184.89	196.58	230.99	245.52	125.31	193.49	195.22	209.37	1.0	4.1
	2013												
		Jan	241.06	200.75	195.21	225.37	250.16	120.59	193.39	203.03	207.13	-1.1	3.7
		Feb	255.64	213.71	194.01	247.01	249.06	120.77	197.18	198.61	214.49	3.5	4.8
		Mar	260.64	214.07	195.60	237.41	249.93	122.38	196.89	199.27	215.52	0.5	4.4
		Apr	258.96	213.96	194.57	241.65	252.76	120.64	196.89	201.86	215.66	0.1	4.5
		May	259.94	214.90	193.65	241.56	257.35	119.62	196.50	203.25	216.21	0.3	4.4
		Jun	255.74	214.59	194.71	243.24	257.20	119.64	199.05	204.47	215.61	-0.3	1.2
		July	261.38	215.40	195.56	252.20	257.87	120.98	199.78	201.54	218.35	1.3	3.3

Source: Uganda Bureau of Statistics.

Table 11: Consumer Price Index Mbale (Base: 2005/2006 =100)

		Food	Beverages and tobacco	Clothing and footwear	Rent, Fuel and utilities	H.hold and personal goods	Transport and communication.	Education	Health, entert.& Others	All items index	Monthly % change	Annual % change
Weights		30.3355	4.5287	3.7102	15.4362	4.7934	13.0972	13.1049	14.9938	100.0000		
Calendar year												
2010		172.72	126.52	129.45	154.33	145.00	118.40	147.13	137.31	149.08		3.5
2011		230.47	151.89	146.60	173.66	176.31	113.42	155.37	159.31	176.59		18.5
2012		258.11	176.31	157.70	208.33	207.37	128.34	178.72	196.05	203.86		15.4
Financial year												
2010/2011		191.01	134.58	136.48	160.04	155.39	110.83	151.77	144.10	157.27		6.1
2011/2012		255.19	169.76	158.59	197.38	196.25	123.82	167.40	180.18	196.03		24.6
2012/2013		257.10	188.73	152.95	209.38	213.16	131.40	179.73	204.16	206.13		5.2
Monthly												
2010	July	162.97	124.69	129.68	156.54	142.61	123.37	146.72	135.60	146.61	-2.4	1.5
	Aug	165.96	124.81	130.41	159.90	143.76	124.24	147.28	136.16	148.40	1.2	1.5
	Sept	168.56	126.96	132.59	155.52	146.30	123.35	152.50	137.85	149.63	0.8	1.2
	Oct	171.59	135.12	132.72	157.74	148.11	106.17	151.24	139.69	149.22	-0.3	0.8
	Nov	174.32	135.22	132.86	159.88	149.98	105.60	150.50	139.92	150.33	0.7	-0.1
	Dec	177.44	134.01	138.90	160.17	152.68	105.48	151.27	144.61	152.41	1.4	2.1
2011	Jan	178.07	136.72	138.30	162.24	153.75	107.33	151.57	143.83	153.24	0.5	4.3
	Feb	187.78	138.34	137.41	159.53	156.88	109.24	152.98	147.40	156.93	2.4	6.2
	Mar	215.78	138.38	140.62	161.63	165.41	101.45	153.23	148.63	165.47	5.4	11.3
	Apr	222.29	140.53	140.85	162.70	164.29	107.13	154.37	148.72	168.57	1.9	12.5
	May	234.09	140.62	142.14	163.47	168.33	108.37	154.10	154.74	173.55	2.9	16.5
	June	233.32	139.60	141.25	161.17	172.62	108.25	155.45	152.03	172.84	-0.4	15.1
	July	236.72	139.03	142.23	165.21	178.26	111.28	155.55	158.33	176.13	1.9	20.1
	Aug	238.51	158.87	146.31	166.78	180.97	112.08	156.94	159.30	178.53	1.4	20.3
	Sept	260.29	169.24	149.94	190.62	188.26	122.73	157.94	171.02	193.05	8.1	29.0
	Oct	254.72	173.22	154.43	193.09	192.82	123.42	157.46	172.59	192.57	-0.2	29.1
	Nov	252.30	174.13	159.67	198.13	195.99	123.99	157.47	175.20	193.47	0.5	28.7
	Dec	251.74	174.03	166.00	199.35	198.09	125.75	157.43	179.94	194.76	0.7	27.8
2012	Jan	253.87	174.07	168.95	212.97	197.33	128.03	159.26	183.67	198.68	2.0	29.6
	Feb	256.19	173.75	168.39	219.90	199.27	127.71	182.45	190.62	204.55	3.0	30.3
	Mar	255.23	173.40	164.77	216.87	206.09	128.93	183.23	188.43	203.90	-0.3	23.2
	Apr	264.13	175.21	163.35	201.24	204.87	127.67	181.96	193.37	204.56	0.3	21.4
	May	268.44	176.58	161.87	203.50	205.68	127.75	180.50	195.61	206.42	0.9	18.9
	June	270.15	175.54	157.13	200.91	207.40	126.46	178.56	194.12	205.76	-0.3	19.0
	July	255.14	176.18	152.12	201.25	209.49	126.51	179.95	192.29	201.11	-2.3	14.2
	Aug	251.62	176.08	151.73	209.28	211.25	126.84	180.75	199.40	202.56	0.7	13.5
	Sep	250.32	176.45	149.95	211.32	211.99	129.63	180.38	201.28	203.07	0.2	5.2
	Oct	258.78	177.08	149.46	210.78	212.43	130.11	180.31	202.42	205.81	1.3	6.9
	Nov	258.62	177.90	151.66	206.91	211.05	130.08	178.23	204.97	205.32	-0.2	6.1
	Dec	254.83	183.45	153.00	205.06	211.59	130.39	179.02	206.25	204.55	-0.4	5.0
2013	Jan	252.77	198.29	151.74	206.58	213.95	133.03	177.99	207.62	205.31	0.4	3.3
	Feb	251.35	199.35	151.09	216.68	213.64	132.14	180.40	207.86	206.68	0.7	1.0
	Mar	255.02	201.21	152.99	212.08	215.05	134.41	180.54	206.81	207.47	0.4	1.8
	Apr	262.74	199.91	155.92	209.07	215.79	134.94	179.93	206.49	209.37	0.9	2.3
	May	265.93	199.55	158.39	211.68	216.27	134.74	178.27	206.41	210.58	0.6	2.0
	Jun	268.07	199.28	157.37	211.82	215.44	134.00	181.02	207.97	211.66	0.5	2.9
	July	262.34	199.77	157.87	218.39	216.76	133.51	180.74	208.40	211.01	-0.3	4.9

Source: Uganda Bureau of Statistics.

Table 12: Consumer Price Index Masaka (Base: 2005/2006 =100)

		Food	Beverages and tobacco	Clothing and footwear	Rent, Fuel and utilities	H.hold and personal goods	Transport and communication.	Education	Health, entert. & Others	All items index	Monthly % change	Annual % change
Weights		28.0398	5.5776	4.5968	10.6448	4.0282	14.4800	15.2928	17.3400	100.0000		
Calendar year												
2010		158.25	131.48	118.96	162.57	146.93	125.70	137.56	147.50	145.21		2.8
2011		211.50	150.57	142.28	182.45	181.28	133.99	147.59	178.65	173.92		19.8
2012		225.49	172.51	157.43	234.39	206.28	147.41	181.88	213.95	199.60		14.8
Financial year												
2010/2011		177.57	137.68	125.04	166.60	158.06	124.84	141.08	157.66	154.31		6.5
2011/2012		223.63	166.09	156.95	215.82	199.56	145.39	164.77	201.47	191.38		24.0
2012/2013		225.66	186.19	161.60	236.07	210.00	147.34	187.02	223.25	203.32		6.2
Monthly												
2010	July	140.96	127.99	117.22	172.54	145.31	128.04	137.35	146.98	141.30	0.2	1.0
	Aug	143.85	127.23	119.14	169.33	146.83	128.04	137.51	147.89	142.06	0.5	-1.2
	Sep	151.89	140.43	120.10	162.59	147.65	128.56	138.32	148.30	144.68	1.8	-0.9
	Oct	163.30	140.15	120.50	155.82	147.99	129.14	139.31	154.62	148.51	2.6	-0.7
	Nov	175.72	140.73	122.91	167.27	149.23	117.87	139.45	155.14	151.88	2.3	2.4
	Dec	179.04	139.14	125.06	168.65	154.99	116.69	139.94	156.71	153.38	1.0	2.1
2011	Jan	185.68	139.60	123.97	163.05	158.84	115.42	140.17	157.92	154.84	1.0	3.3
	Feb	180.19	139.92	124.38	162.72	161.34	119.20	143.12	159.06	154.59	-0.2	7.4
	Mar	191.24	139.89	126.26	160.40	164.46	127.40	143.19	163.29	159.59	3.2	11.0
	Apr	217.20	137.24	129.11	167.63	166.33	128.84	143.36	164.65	168.17	5.4	18.1
	May	203.96	139.82	133.65	172.12	176.48	130.05	143.97	169.60	166.82	-0.8	19.3
	June	197.82	139.98	138.17	177.06	177.31	128.79	147.24	167.73	165.87	-0.6	17.6
	July	204.37	145.94	144.29	187.62	182.31	130.00	150.24	170.37	170.74	2.9	20.8
	Aug	218.95	161.06	150.42	181.86	192.02	131.63	151.84	190.31	179.67	5.2	26.5
	Sep	243.86	163.68	155.01	184.15	195.73	145.00	150.73	197.67	190.44	6.0	31.6
	Oct	239.75	165.70	158.69	212.00	197.77	146.05	151.82	196.60	192.75	1.2	29.8
	Nov	232.30	165.81	160.60	215.88	200.52	152.90	151.96	204.02	193.58	0.4	27.5
	Dec	222.71	168.24	162.83	204.89	202.26	152.62	153.39	202.60	189.96	-1.9	23.9
2012	Jan	207.10	168.34	161.98	217.80	204.43	154.24	153.52	208.51	188.29	-0.9	21.6
	Feb	209.71	169.41	162.10	231.56	200.28	146.88	183.77	209.72	194.16	3.1	25.6
	Mar	214.24	171.35	160.16	232.88	201.94	143.79	183.69	211.81	195.55	0.7	22.5
	Apr	233.54	170.43	155.78	245.50	204.97	144.20	182.10	212.02	202.03	3.3	20.1
	May	233.77	171.27	155.61	242.63	205.08	149.58	182.00	206.48	201.64	-0.2	20.9
	June	223.22	171.85	155.95	233.12	207.44	147.74	182.13	207.50	197.74	-1.9	19.2
	July	212.30	172.67	156.04	238.86	209.30	149.65	183.95	214.06	197.11	-0.3	15.4
	Aug	223.69	172.04	153.65	240.14	207.80	145.84	184.45	216.28	200.14	1.5	11.4
	Sep	236.89	171.93	151.01	231.19	207.50	145.63	185.86	219.12	203.43	1.6	6.8
	Oct	241.91	173.08	156.23	232.72	207.07	146.57	185.16	220.65	205.58	1.1	6.7
	Nov	244.69	178.65	157.38	233.45	209.58	147.33	187.74	220.65	207.41	0.9	7.1
	Dec	226.67	179.10	163.20	230.04	209.80	146.78	188.04	224.15	202.87	-2.2	6.8
2013	Jan	214.25	192.93	162.49	248.20	210.44	147.66	187.83	222.41	201.87	-0.5	7.2
	Feb	210.22	193.43	163.52	240.35	210.57	147.37	187.86	223.45	200.13	-0.9	3.1
	Mar	216.21	199.29	166.41	239.10	211.69	147.83	187.32	226.50	202.70	1.3	3.7
	Apr	239.15	199.39	167.62	238.98	211.98	147.93	187.79	229.54	209.80	3.5	3.8
	May	228.16	200.84	170.52	236.57	212.41	147.69	188.20	230.62	206.91	-1.4	2.6
	Jun	213.75	200.97	171.08	223.27	211.83	148.23	190.00	231.74	202.01	-2.4	2.2
	July	222.87	208.56	168.08	229.65	212.65	147.24	190.51	230.74	205.33	1.6	4.2

Source: Uganda Bureau of Statistics.

Table 13: Consumer Price Index Mbarara (Base: 2005/2006 =100)

		Food	Beverages and tobacco	Clothing and footwear	Rent, Fuel and utilities	H.hold and personal goods	Transport and communication.	Educ ation	Health, entert. & Others	All items index	Monthl y % change	Annual % change	
		28.3959	5.4676	4.6135	11.8075	3.5870	13.2070	17.0981	15.8234	100.0000			
Weights													
Calendar year													
	2010	163.17	128.65	138.15	175.11	151.07	119.70	138.96	153.84	149.75		5.3	
	2011	215.02	148.63	164.21	196.57	187.24	111.98	149.22	183.04	175.95		17.5	
	2012	235.07	171.15	181.77	240.42	213.08	130.03	168.85	211.97	200.11		13.7	
Financial year													
	2010/2011	180.65	133.50	145.25	182.42	162.28	109.25	142.25	164.29	157.41		5.6	
	2011/2012	230.54	165.31	182.54	219.13	207.30	124.97	159.76	202.84	192.15		22.1	
	2012/2013	236.16	182.48	179.69	254.68	215.49	130.63	175.67	218.83	205.04		6.7	
Monthly													
	2010	July	144.34	125.06	138.56	179.27	148.28	125.31	140.41	151.49	145.23	-0.7	4.4
		Aug	150.78	125.96	139.74	175.53	149.39	125.10	140.54	155.36	147.37	1.5	0.6
		Sep	163.96	130.39	138.82	180.80	150.49	128.27	139.84	158.76	152.81	3.7	0.5
		Oct	172.87	136.07	138.11	178.32	152.12	105.88	139.68	159.37	152.49	-0.2	-0.3
		Nov	175.54	134.23	140.14	177.44	152.15	103.55	139.65	160.50	153.01	0.3	0.3
		Dec	172.17	130.38	143.72	175.92	158.44	102.99	139.71	164.66	152.65	-0.2	-0.1
	2011	Jan	175.20	133.99	145.66	181.07	159.97	104.89	139.24	165.91	154.83	1.4	2.2
		Feb	180.78	134.52	145.37	183.87	161.56	106.43	143.95	165.60	157.78	1.9	5.6
		Mar	202.67	136.64	150.18	184.86	171.53	99.61	143.94	167.11	164.14	4.0	10.7
		Apr	210.43	139.62	152.28	189.03	176.14	101.69	143.93	168.57	167.76	2.2	11.5
		May	215.82	137.92	153.28	187.59	180.60	102.62	145.33	176.02	170.78	1.8	15.8
		June	203.24	137.17	157.12	195.39	186.66	104.67	150.84	178.12	170.03	-0.4	16.3
		July	211.11	144.46	163.04	198.91	189.58	106.68	152.16	182.53	174.64	2.7	20.3
		Aug	213.61	159.73	169.69	199.98	194.01	112.61	152.31	186.38	178.20	2.0	20.9
		Sep	242.29	163.12	175.47	203.91	204.16	123.11	154.74	194.50	190.71	7.0	24.8
		Oct	246.96	164.34	180.98	212.02	203.97	125.79	154.64	199.90	194.50	2.0	27.5
		Nov	248.16	166.05	185.82	215.46	206.07	128.82	154.85	203.52	196.65	1.1	28.5
		Dec	229.94	165.99	191.64	206.78	212.60	126.87	154.75	208.33	191.43	-2.7	25.4
	2012	Jan	211.41	166.73	196.02	218.87	209.55	128.82	155.63	209.31	188.30	-1.6	21.6
		Feb	215.62	166.99	191.20	224.44	209.90	127.88	166.70	209.62	191.77	1.8	21.5
		Mar	222.96	167.44	186.55	234.77	215.88	129.22	166.71	210.58	195.43	1.9	19.1
		Apr	245.99	175.58	182.58	242.64	215.12	131.44	167.39	210.46	203.52	4.1	21.3
		May	251.82	172.08	185.30	237.98	216.28	128.34	166.72	211.51	204.25	0.4	19.6
		Jun	226.55	171.19	182.24	233.83	210.44	130.01	170.48	207.70	196.44	-3.8	15.5
		July	222.75	170.84	179.35	252.54	211.16	134.69	170.51	208.87	198.25	0.9	13.5
		Aug	239.69	170.19	173.69	253.51	212.52	129.53	170.20	210.03	202.38	2.1	13.6
		Sept	245.35	168.69	171.64	249.76	213.70	129.49	172.26	215.10	204.56	1.1	7.3
		Oct	245.15	170.09	176.41	246.73	213.93	130.85	172.88	215.41	204.78	0.1	5.3
		Nov	251.54	168.92	176.93	242.32	214.22	130.32	173.53	216.22	206.22	0.7	4.9
		Dec	242.05	185.09	179.39	247.60	214.29	129.77	173.15	219.53	205.53	-0.3	7.4
	2013	Jan	223.77	191.81	179.74	246.36	216.71	131.88	173.33	219.31	200.94	-2.2	6.7
		Feb	225.06	189.95	179.26	262.23	214.99	130.22	179.23	222.34	204.26	1.7	6.5
		Mar	230.52	191.75	180.01	257.21	219.73	130.97	180.45	223.78	206.06	0.9	5.4
		Apr	238.01	194.24	183.77	267.65	217.39	129.62	179.90	223.83	209.38	1.6	2.9
		May	242.89	194.33	188.67	262.76	219.16	128.20	180.10	226.12	210.69	0.6	3.2
		Jun	227.12	193.86	187.42	267.52	218.14	132.13	182.49	225.88	207.54	-1.5	5.7
		July	236.13	198.33	187.79	267.80	220.84	133.16	182.34	226.59	210.72	1.5	6.3

Source: Uganda Bureau of Statistics.

Table 14: Consumer Price Index Gulu (Base: 2005/2006 =100)

		Food	Beverages and tobacco	Clothing and footwear	Rent, Fuel and utilities	H.hold and personal goods	Transport and communication.	Educatio n	Health, entert. & Others	All items index	Monthl y % change	Annual % change	
		38.0052	8.5146	3.7431	15.6811	4.6634	5.9713	12.6084	10.8130	100.0000			
Weights													
Calendar year													
	2010	173.41	147.34	127.09	165.93	154.44	125.88	157.79	127.77	157.65		2.2	
	2011	237.02	169.49	143.14	197.02	192.27	129.69	170.03	136.18	193.64		22.8	
	2012	261.10	207.77	163.42	231.44	219.48	155.10	202.56	150.57	220.65		14.0	
Financial year													
	2010/2011	191.11	151.85	133.21	178.40	169.52	122.65	164.57	129.55	168.51		6.7	
	2011/2012	264.18	191.10	157.26	219.13	209.60	144.69	184.67	144.55	214.25		27.1	
	2012/2013	255.94	218.93	166.80	233.74	227.40	155.91	211.99	155.49	222.26		3.7	
Monthly													
	2010	July	170.31	142.31	127.22	171.18	153.24	128.99	161.19	127.25	157.38	-1.3	-1.0
		Aug	165.12	147.46	129.16	174.51	153.38	126.89	161.09	127.25	156.31	-0.7	-2.8
		Sep	168.74	148.10	130.95	169.27	158.63	129.55	160.21	127.93	157.35	0.7	-1.7
		Oct	167.83	151.33	130.92	170.79	156.70	113.52	160.22	128.61	156.55	-0.5	0.4
		Nov	172.54	152.76	131.90	174.22	159.53	113.39	160.58	128.62	159.20	1.7	1.4
		Dec	170.29	149.32	132.54	164.97	165.22	119.26	160.87	128.62	157.28	-1.2	1.4
	2011	Jan	173.08	150.72	132.52	171.46	169.83	120.42	160.59	129.70	159.84	1.6	3.8
		Feb	185.90	153.90	133.32	173.51	175.94	123.07	169.52	128.50	166.77	4.3	7.6
		Mar	208.90	161.76	135.34	192.36	180.76	121.79	170.70	129.33	179.61	7.7	12.9
		Apr	231.92	150.94	135.99	194.58	186.26	123.94	169.97	132.00	188.38	4.9	17.8
		May	244.58	156.39	137.75	191.58	185.38	125.11	169.87	132.79	193.36	2.6	20.5
		June	234.10	157.23	140.90	192.44	189.31	125.87	169.97	134.06	190.08	-1.7	19.3
		July	256.37	160.83	142.41	192.19	194.04	125.93	171.58	136.16	199.52	5.0	26.8
		Aug	270.37	175.62	144.24	199.44	192.56	125.88	172.54	136.72	207.42	4.0	32.7
		Sep	261.29	189.62	147.72	204.09	200.45	134.57	171.88	139.14	207.08	-0.2	31.6
		Oct	267.63	187.46	151.75	213.97	206.08	134.67	171.75	145.83	211.98	2.4	35.4
		Nov	267.57	192.45	156.03	210.06	212.73	144.90	170.87	144.99	212.65	0.3	33.6
		Dec	242.48	197.02	159.74	228.54	213.93	150.10	171.16	144.99	206.94	-2.7	31.6
	2012	Jan	242.22	192.01	161.73	220.82	215.29	143.19	172.57	146.17	205.24	-0.8	28.4
		Feb	259.32	198.81	165.85	228.32	216.17	151.70	200.25	148.57	217.95	6.2	30.7
		Mar	263.84	188.32	164.28	223.04	213.01	154.51	202.12	148.35	218.12	0.1	21.4
		Apr	284.77	202.11	163.15	222.26	218.72	154.22	203.28	148.35	227.47	4.3	20.8
		May	279.39	206.86	164.85	235.06	216.83	159.72	203.17	147.67	228.06	0.3	17.9
		June	274.88	202.03	165.32	251.81	215.38	156.94	204.86	147.61	228.55	0.2	20.2
		July	265.96	214.40	160.97	250.03	217.00	155.86	205.49	150.26	226.15	-1.1	13.3
		Aug	265.18	221.48	159.34	238.52	220.76	154.74	205.33	152.39	224.91	-0.5	8.4
		Sept	264.51	216.97	164.40	221.27	226.15	160.51	208.32	153.15	222.81	-0.9	7.6
		Oct	245.69	211.23	162.12	226.69	221.52	156.19	208.21	154.29	215.57	-3.3	1.7
		Nov	242.77	219.36	164.68	223.82	222.92	157.90	208.64	153.14	214.89	-0.3	1.1
		Dec	244.67	219.66	164.36	235.69	230.05	155.77	208.48	156.88	218.08	1.5	5.4
	2013	Jan	249.77	215.81	168.33	231.10	231.22	147.91	208.07	157.75	218.75	0.3	6.6
		Feb	246.50	215.89	168.69	234.41	233.24	164.26	217.63	156.74	220.21	0.7	1.0
		Mar	253.97	215.96	170.66	232.77	232.31	155.87	218.69	156.74	222.46	1.0	2.0
		Apr	264.25	221.80	172.38	232.13	232.56	155.86	218.74	156.62	226.83	2.0	-0.3
		May	267.75	227.59	173.00	241.57	231.30	153.28	217.70	158.95	230.07	1.4	0.9
		Jun	260.24	227.01	172.68	236.93	229.77	152.82	218.56	158.95	226.43	-1.6	-0.9
		July	259.38	222.03	172.79	232.66	231.71	152.87	218.50	159.93	225.21	-0.5	-0.4

Source: Uganda Bureau of Statistics.

Table 15 : Consumer Price Index Arua (Base: 2005/2006 =100)

		Food	Beverages and tobacco	Clothing and footwear	Rent, Fuel and utilities	H.hold and personal goods	Transport and communication.	Educa tion	Health, entert. & Others	All items index	Monthl y % change	Annual % change
		41.5525	9.2788	5.4014	11.7798	5.5667	7.6258	6.4576	12.3373	100.0000		
Weights												
Calendar year												
	2010	169.26	151.79	142.97	138.23	138.20	140.86	141.68	130.65	152.13		-2.4
	2011	233.92	171.25	161.99	191.90	178.65	153.51	149.45	143.80	193.49		27.2
	2012	280.48	208.24	189.19	204.65	199.31	163.86	165.47	162.76	224.55		16.1
Financial year												
	2010/2011	187.10	155.60	149.64	164.12	153.82	141.97	144.95	135.00	165.00		6.9
	2011/2012	273.40	191.09	178.05	198.14	193.91	164.18	157.30	155.96	217.01		31.5
	2012/2013	273.43	220.64	195.36	205.26	202.54	164.89	168.55	166.85	224.14		3.3
Monthly												
	2010											
	July	178.34	151.09	143.18	142.85	138.04	148.50	142.40	131.87	157.16	2.5	-2.9
	Aug	169.93	150.32	145.58	149.98	139.35	147.21	142.64	131.72	154.53	-1.7	-4.2
	Sep	172.47	149.30	146.47	139.38	140.15	147.21	142.39	134.74	154.70	0.1	-2.7
	Oct	173.54	150.48	146.46	137.33	139.26	130.08	142.20	134.83	153.65	-0.7	-4.6
	Nov	167.28	152.06	147.24	138.08	141.57	131.97	142.24	133.84	151.48	-1.4	-4.5
	Dec	167.20	154.29	149.91	140.48	144.26	134.05	142.42	133.84	152.40	0.6	2.4
	2011											
	Jan	174.69	167.00	149.51	148.40	154.82	135.37	143.31	134.60	158.44	4.0	6.5
	Feb	187.90	161.91	149.20	176.26	163.26	138.58	146.22	134.64	167.63	5.8	10.1
	Mar	204.11	153.73	148.86	190.91	164.24	141.52	148.22	135.48	175.83	4.9	18.2
	Apr	208.78	162.53	154.02	201.80	170.50	147.15	148.08	136.55	181.05	3.0	22.2
	May	218.86	159.34	157.51	202.48	174.43	147.63	149.06	138.44	185.76	2.6	23.6
	June	222.13	155.09	157.80	201.47	175.91	154.40	150.21	139.48	187.42	0.9	22.2
	July	248.94	177.35	160.88	175.26	184.20	155.56	150.44	141.13	198.48	5.9	26.3
	Aug	257.54	177.57	161.78	189.27	184.29	157.47	149.71	146.69	204.56	3.1	32.4
	Sep	269.54	181.97	165.44	200.59	191.93	166.53	151.57	150.53	213.19	4.2	37.8
	Oct	278.62	174.01	169.64	201.87	189.85	165.60	152.01	154.04	216.88	1.7	41.2
	Nov	273.39	186.67	180.00	211.24	194.88	166.24	152.09	156.83	218.22	0.6	44.1
	Dec	262.54	197.78	189.22	203.30	195.49	166.06	152.47	157.22	214.40	-1.8	40.7
	2012											
	Jan	276.13	190.39	187.40	210.25	197.45	167.03	155.43	159.52	220.74	3.0	39.3
	Feb	270.63	193.45	184.09	205.57	198.66	167.98	164.16	160.57	218.84	-0.9	30.5
	Mar	275.65	202.13	183.50	192.00	193.55	169.88	164.58	160.58	219.99	0.5	25.1
	Apr	278.99	190.85	185.29	191.34	197.00	164.86	165.06	161.02	220.25	0.1	21.7
	May	287.23	205.60	183.48	194.52	200.25	162.13	165.25	161.34	225.34	2.3	21.3
	June	301.59	215.37	185.86	202.41	199.40	160.88	164.86	162.02	233.19	3.5	24.4
	July	294.82	215.24	185.28	208.63	199.76	161.50	165.09	161.51	231.08	-0.9	16.4
	Aug	289.16	199.24	187.57	208.83	199.51	161.84	165.16	161.70	227.43	-1.6	11.2
	Sep	287.14	208.15	193.70	208.39	198.03	163.26	168.63	163.12	228.13	0.3	7.0
	Oct	276.30	225.80	188.59	216.52	202.21	160.35	169.26	165.46	226.28	-0.8	4.3
	Nov	272.06	222.33	201.04	212.34	203.20	161.67	168.90	167.94	224.82	-0.6	3.0
	Dec	256.11	230.36	204.42	204.99	202.75	164.99	169.23	168.33	218.55	-2.8	1.9
	2013											
	Jan	270.13	220.21	201.82	200.02	202.99	165.58	169.18	170.07	222.98	2.0	1.0
	Feb	264.96	223.23	195.52	197.54	205.10	164.44	168.58	168.50	220.27	-1.2	0.7
	Mar	269.05	235.51	196.05	199.30	204.13	166.89	168.58	168.66	223.50	1.5	1.6
	Apr	268.14	220.87	195.16	198.04	203.29	168.93	168.57	168.50	221.66	-0.8	0.6
	May	270.39	226.32	197.95	205.69	204.94	170.16	168.67	169.46	224.46	1.3	-0.4
	Jun	262.93	220.43	197.20	202.86	204.52	169.06	172.74	168.98	220.53	-1.7	-5.4
	July	258.97	228.68	198.63	202.65	206.31	169.12	172.31	169.56	219.86	-0.3	-4.9

Source: Uganda Bureau of Statistics.

APPENDIX

Table 16: AVERAGE RETAIL MARKET PRICES (UG. SHS) FOR CPI COMMODITIES - PAGES 1-5

ITEM	UNIT	CENTRE																
		KHI		KML		JINJA		MBALE		MASAKA		MBARARA		GULU		ARUA		
		Jun 2013	July 2013	Jun 2013	July 2013	Jun 2013	July 2013	Jun 2013	July 2013	Jun 2013	July 2013	Jun 2013	July 2013	Jun 2013	July 2013	Jun 2013	July 2013	
11 Food Staples																		
10.102 Matooke (Bunch)	Kg	569	496	524	492	526	444	616	611	348	403	245	238			581	553	
10.103 Sweet potatoes	Kg	604	531	493	478	340	455	433	470	424	548	524	586	430	509	517	593	
10.104 Irish potatoes	Kg	1,117	1,150	929	946	1,253	1,002	625	494	1,077	768	1,336	1,325	1,408	1,474	1,467	1,278	
10.105 Cassava (fresh)	Kg	739	725	626	631	390	536	372	357	536	571	496	533	367	310	421	357	
10.106 Cassava flour	Kg			1,433	1,323	963	881	1,119	1,000			1,514	1,500	2,932	2,949	1,132	1,000	
10.107 Cassava (sun dried)	Kg													973	1,010			
10.107 Cassava (dry farmented)	Kg													771	756	712	761	
10.108 Matooke (Cluster)	Kg			603	526	622	567	822	809				435	416	1,042	1,004	825	843
12 Fruit & vegetables																		
102 Fresh Fruit																		
10.201 Passion fruit	Kg	3,965	4,826	3,766	4,481	4,058	4,986	3,338	4,034	5,032	3,405	3,500	5,210	3,651	3,150	3,764	3,492	
10.202 Pineapples	Kg	1,169	1,020	1,019	978	760	810	811	731	565	706	806	877	819	995	653	730	
10.203 Banana-Ndizi	Kg	2,377	2,335	2,266	2,447	1,882	2,145	1,259	1,462	1,049	1,210	1,359	1,554	2,360	3,150	1,454	1,213	
10.204 Mangoes	Kg	2,025	1,909	1,577	1,748													
10.205 Banana-Bogoya	Kg	1,607	1,465	1,515	1,477	1,108	1,009	1,226	1,086	882	831	946	936	1,644	1,670	932	933	
10.206 Oranges	Kg	1,526	1,452	1,363	1,376	1,064	1,257	1,162	1,060	1,652	1,506	1,676	2,197	1,433	1,502	1,238	1,363	
10.207 Water Melon	Kg	1,221	1,093															
10.208 Papaya	Kg	792	983															
10.209 Avocado	Kg	1,309	1,516	1,125	1,388	897	971	926	862	568	630	634	699	962	1,160	569	677	
Tangerines	Kg	3,403	3,090	2,369	2,696													
103 Fresh Vegetables																		
10.304 Cabbage	Kg	937	1,130	873	1,129	861	624	949	720	640	727	702	864	1,228	1,133	842	744	
10.305 Bbugga	Kg	2,218	2,731	2,005	2,590	922	1,026			1,613	1,728	1,297	1,983					
10.306 Pigeon pea leaves	Kg													923	871	946	851	
10.305 Gobe leaves	Kg							881	862									
10.302 Garlic	Kg	17,386	18,083															
10.308 Carrots	Kg	2,219	2,227	1,823	2,018	2,562	2,065	1,945	2,186	2,275	2,651	3,022	3,174			2,926	3,327	
10.303 Tomatoes,big	Kg	2,079	1,761	1,905	1,737	2,355	2,257	2,285	1,364	1,178	1,297	1,699	1,558	2,697	1,402	1,588	957	
10.301 Onions Big	Kg	2,829	3,304	2,766	2,786	2,263	2,388	2,802	2,050	2,266	2,657	2,879	2,557	2,102	2,272	3,079	1,877	
10.310 Egg plant	Kg	1,985	1,581	1,623	1,738	931	1,051	1,287	1,427	1,355	2,031	1,401	1,699	2,416	1,504	1,123	709	
10.307 Bitter tomatoes	Kg	2,441	2,342	2,128	2,172	1,175	1,392	1,227	1,625	1,353	1,530	1,058	1,601	2,617	2,120	777	730	
10.309 Green Pepper	Kg	4,987	4,481	3,612	4,402	4,366	3,675	3,969	3,380	3,313	4,053	4,551	4,676	5,848	3,673	2,646	2,329	
10.312 Beans fresh	Kg	4,027	4,452															
Pumpkin	Kg	753	883	854	892													
104 Dried Vegetables																		
10.401 Dried beans (Nambale)	Kg	2,843	2,700	2,256	2,205	2,000	1,800	1,931	2,000	2,000	2,000	2,321	2,065					
10.402 Dried beans (Kanyebwa)	Kg	2,962	2,787	2,432	2,177	2,000	1,800	1,931	1,931	2,000	2,000							
10.403 Dried beans (Kaula)	Kg											2,431	2,065					
10.406 Dried Beans (Museveni)	Kg													3,278	2,979	2,560	2,572	
10.405 Dried beans (Yellow)	Kg													1,754	2,330	2,625	2,547	
10.407 Groundnuts (unpounded)	Kg	4,442	4,234	4,044	3,971	3,550	3,466	3,500	3,500	3,732	3,659	4,000	4,000	3,826	4,133	3,489	3,467	
10.408 Groundnuts (pounded)	Kg	4,949	4,848	4,295	4,097	3,533	3,466	3,597	3,544	3,631	3,659	4,000	4,000	4,642	4,642	6,525	6,198	
10.409 Cow peas yellow	Kg	4,216	4,022	3,801	3,752	3,000	3,000	3,325	3,544	4,000	3,826	4,000	4,000	2,122	3,107	2,000	2,000	
10.410 Peas Lapena	Kg																	
13 Meat & poultry																		
10.501 Meat (beef)	Kg	8,000	8,000	7,936	7,848	8,000	8,000	8,000	8,000	8,000	8,000	7,000	7,000	8,320	8,490	7,329	7,329	
10.502 Meat (Goat)	Kg	10,309	10,153	10,218	9,891	9,000	9,000	8,653	8,653	9,487	9,740	9,000	8,653	9,655	9,655	9,000	9,000	
10.503 Meat (Pork)	Kg	8,615	8,485	8,197	8,174	8,000	8,000			7,000	7,000	9,655	9,655	8,320	8,000	8,000	8,000	
10.504 Chicken (Cock)- local	Kg	10,621	10,815	10,846	11,012	9,769	9,380	11,405	10,377	12,830	12,034			8,235	8,416	10,308	10,607	
10.505 Chicken (Hen) - local	Kg	11,928	11,649	10,724	11,174	10,844	11,188	9,531	10,000	10,917	10,496	9,980	10,179	7,931	8,699	10,751	10,195	
10.506 Turkey meat	Kg							10,000	10,000									
14 Fish																		
10.601 Fish - Mukene	Kg	10,313	8,766	7,692	7,460	6,640	7,366	9,709	9,129	5,291	6,077	9,940	8,495	8,031	7,539	8,298	8,298	
10.602 Fish - Dried Nileperch	Kg	17,691	18,492	14,890	15,071	12,156	12,014	12,931	13,259	12,095	10,428	13,609	15,536	-	-			
10.603 Fish - Fresh Tilapia	Kg	9,472	9,898	8,836	9,167	7,360	7,591	8,988	8,918	9,170	9,573	9,960	10,195	8,457	9,580	14,782	17,334	
10.604 Fish - Dried Tilapia	Kg	24,536	25,598	20,478	20,112	26,352	27,174	47,290	48,773	13,082	14,350	23,050	16,751	14,872	17,711	14,616	15,150	
10.605 Fish - Angara	Kg													25,427	20,755	17,852	21,862	
107 Milk & eggs																		
10.701 Milk local pack	Ltr	2,000	2,048	2,000	2,119	2,400	2,400											
10.702 Milk (Fresh)	Ltr			1,233	1,413	1,225	1,231	1,167	1,237	973	1,216	1,013	1,333	1,400	1,400	1,871	1,925	
10.703 Eggs (unit)	2 eggs			591	586	600	600	700	700	600	565	600	600	700	700	700	700	
10.704 Eggs(Tray)	Tray	8,241	8,111															
10.705 Powdered milk	Tin	21,467	21,876															
108 Bread & cereals																		
10.801 Rice	5Kg/Kg	46,258	46,115	3,288	3,274	3,366	3,365	3,227	3,197	2,865	2,759	3,325	3,325	2,323	2,458	2,932	2,932	
10.802 Maize flour	5Kg/Kg	14,204	14,660	1,860	1,872	1,600	1,600	1,566	1,500	1,630	1,600	1,766	1,800	1,834	1,764	1,966	2,036	
10.803 Millet flour	Kg	4,453	4,448	2,584	2,608	2,000	2,000	2,433	2,530	2,692	2,727	3,085	3,000	2,554	2,578	2,663	2,890	
10.804 Maize grains	Kg													1,178	1,044	1,182	1,219	
10.805 Bread (Loaf)	1Kg/500g	3,656	3,568	1,845	1,985	1,854	1,864	1,890	1,931	1,931	1,944	1,939	2,008	2,041	2,041	2,451	2,206	
10.806 Biscuits	Tin/200 gm	14,342	14,463	2,076	2,090	2,000	2,000	2,000	2,000	2,000	2,098	2,321	2,321	2,000	2,000	1,766	1,766	
10.807 Buns	200g			722	728	756	734	758	748	727	772	800	850	753	760	862	1,014	
10.808 Sorghum grains	Kg													794	788	938	1,018	

ITEM	UNIT	CENTRE															
		KHI		KML		JINJA		MBALE		MASAKA		MBARARA		GULU		ARUA	
		Jun 2013	July 2013	Jun 2013	July 2013	Jun 2013	July 2013	Jun 2013	July 2013	Jun 2013	July 2013	Jun 2013	July 2013	Jun 2013	July 2013	Jun 2013	July 2013
10.809 Domestic corn	500 g	2.483	2.258	2.334	2.404												
10.810 Sim Sim	Kg					5.161	5.406	5.000	4.827			5.745	6.000	4.642	4.995	5.000	5.147
109 Sugar,tea & spices																	
10.901 Brown sugar	Kg	3.516	3.500	3.089	3.250	3.000	3.397	3.065	3.466	3.000	3.128	3.065	3.065	3.107	3.000	3.000	3.118
10.902 Coffee	50 g	11.109	11.899														
10.903 Tea bags/ Tea leaves		4.457	4.214	1.474	1.482	1.500	1.500	1.500	1.500	1.500	1.500	1.549	1.549	100	100	100	100
10.903 Tea Leaves (loose)	250g			1.576	1.673	1.741	1.565	1.964	2.023	1.543	1.566	1.674	1.816	1.526	1.612	2.184	2.055
10.907 Salt	500g	473	473	460	451	400	400	400	400	400	400	431	464	500	500	500	500
110 Oils & fats																	
11.002 Local Ghee	Kg	16.728	16.728	14.370	14.373					14.000	15.000	13.162	14.000				
11.002 Margarine	500g/250g	4.858	4.800	2.670	2.710	2.800	2.800	2.733	2.696	2.863	2.865	2.823	2.823	3.000	3.000	2.696	2.696
11.003 Cooking fat	500g	3.721	3.639	3.670	3.612	3.500	3.500	3.500	3.500	3.500	3.579	3.500	3.500	3.826	3.826	4.000	4.000
11.004 Refined oil	3	20.100	20.238	1.563	1.593	1.666	1.733	1.566	1.600	1.564	1.564	1.864	1.864	1.700	1.698	1.687	1.687
2 Beverages & Tobacco																	
201 Non-alcohol.beverag.																	
20.101 Bottled soda	300ml	1.000	1.000	1.000	1.000	1.000	1.000	1.000	1.000	1.000	1.000	1.000	1.000	1.000	1.000	1.000	1.000
20.102 Mineral Water	500ml	1.000	1.000	991	982	1.000	1.000	800	800	1.000	1.000	824	862	1.000	1.000	800	800
202 Alcoholic beverages																	
20.201 Brewed bottled beers	500ml	3.000	3.000	3.000	3.000	3.000	3.000	3.000	3.000	3.000	3.164	3.000	3.065	3.000	3.000	3.000	3.000
20.202 Waragi (crude)	300ml			2.995	3.018	3.532	3.395	2.344	2.247	2.614	2.733	2.755	2.798	1.254	1.149	868	877
20.203 Malwa	2 Ltrs			3.264	3.206	2.787	2.878	2.719	2.898	3.187	3.356	2.904	2.990	1.984	1.851	2.230	2.373
20.205 Spirits	750ml	17.493	17.620														
20.206 Wines	750ml	32.978	33.015														
203 Tobacco																	
20.301 Cigarettes	Pkt	4.726	4.775	2.431	2.365	2.500	2.500	2.500	2.657	2.500	2.500	2.365	2.399	2.508	2.585	2.431	2.431
2.032 Tobacco leaves	Kg													8.469	12.689	14.491	20.000
31 Clothing & Footwear																	
31 Clothing																	
3101 Men clothing																	
30.101 Trousers,	1 Unit	103.085	106.413	36.593	36.593	23.208	25.000	19.310	18.732	20.000	20.000	17.213	17.213	25.000	25.000	25.000	25.000
30.102 Dress Shirt	1 Unit	98.305	106.266	35.000	35.000	20.000	20.758	18.982	17.745	17.871	18.612	15.639	16.222	20.000	18.974	19.310	21.544
30.103 T shirt	1 Unit	67.824	69.521	31.582	30.000	20.000	20.000	15.979	15.477	14.473	13.473	17.239	15.940	17.745	17.000	8.000	8.000
30.104 Jeans brand imitation	1 Unit	91.458	94.727	41.602	41.602	25.000	25.000	18.643	17.406	22.361	20.000	19.310	21.132	25.000	25.000	25.000	25.000
30.105 Two piece Suit	1 Unit	809.431	818.185	196.610	178.632	174.356	184.932	193.098	189.824	134.164	134.164	140.000	140.000	350.000	350.000		
30.106 Underpants- briefs	1 Unit	38.259	38.259	5.000	5.000	2.000	2.000	2.000	2.000	3.000	3.000	3.000	3.302	2.364	2.364	1.145	1.145
30.107 Socks,	1 pair	30.000	28.231	5.000	5.000	2.000	2.000	2.000	2.000	1.414	1.414	2.289	2.140	1.500	1.500	1.000	1.145
30.108 Neckties	1 Unit	50.000	54.074	6.316	6.316	5.000	5.000	3.659	4.091	5.916	5.439	5.000	5.000	3.575	3.575	4.000	4.000
302 Women clothing																	
30.201 Blouse & skirt suit	1 Unit	350.000	350.000	82.462	82.462	74.833	68.000	78.297	78.720	67.082	60.000	60.000	60.000	51.193	51.193	73.485	73.485
30.202 Trouser suit	1 Unit	350.000	359.727	82.462	81.222												
30.203 Straight dress	1 Unit	106.266	106.266	48.700	48.700							60.000	60.000	51.193	51.193		
3.112 Straight skirt	1 Unit	74.889	74.889	37.417	37.417	20.000	20.000	18.982	19.480	20.000	20.000	17.213	18.974	25.246	25.000	28.460	28.460
30.205 Jeans skirt	1 Unit	82.462	82.462	40.000	40.000	25.000	25.000	19.310	22.861	22.361	20.000	20.000	21.544	25.000	25.000	35.000	32.404
30.206 Brassieres,	1 Unit	33.247	33.247	7.000	7.000	2.823	3.000	3.659	3.742	3.000	3.000	5.000	4.472	3.000	3.000	4.000	4.000
30.207 Ladies briefs	1 Unit	26.566	26.566	4.642	4.642	3.000	3.000	2.500	2.364	4.000	3.464	3.347	3.450	2.340	2.213	4.000	4.000
303 Children clothing																	
30.301 Two piece Boys clothing	1 Unit	58.285	58.285	39.791	39.791	30.000	30.000	27.257	28.229	32.404	32.404	35.000	35.000	34.489	35.000	35.000	35.000
30.302 Two piece Girls clothing	1 Unit	51.614	54.848	36.593	38.259	30.000	30.000	27.965	28.487	32.404	32.404	35.000	32.404	34.733	35.496	35.000	35.000
30.303 Disposable diapers	1 pkt	6.891	6.933	6.803	7.186												
30.304 Baby dress with underpant	1 Unit	41.602	44.814	31.582	31.582	15.000	15.000	15.000	14.491	15.000	15.000	15.492	15.000	14.619	15.000	20.000	20.000
30.305 Children Socks	1 pair	5.000	5.000	2.000	2.321	2.000	2.000	1.000	1.000	2.000	2.000	2.115	2.000	1.107	1.107	3.000	3.000
304 Other clothings																	
30.401 Kitenge wax materials	6 yards	71.628	71.628	41.195	41.195	35.000	35.330	35.330	35.247	34.641	34.641	30.000	30.000	40.235	40.742	25.000	25.000
30.402 Traditional wear material	6 yards	236.482	239.792	42.426	42.426	30.000	30.000	25.650	25.246	22.361	25.000	42.426	40.000				
30.403 Tailoring charges(Simple		23.208	23.208	10.000	10.000	8.320	8.320	7.653	7.653	8.944	10.000	10.627	10.699	10.000	10.000	8.653	9.655
30.404 2nd Hand shirts	Bale			854.275	862.888	854.275	862.888	854.275	862.888	854.275	862.888	854.275	862.888	854.275	862.888	854.275	862.888
30.405 2nd Hand dresses	Bale			559.745	559.745	559.745	559.745	559.745	559.745	559.745	559.745	559.745	559.745	559.745	559.745	559.745	559.745
30.406 2nd Hand baby rumage	Bale			380.738	402.415	380.738	402.415	380.738	402.415	380.738	402.415	380.738	402.415	380.738	402.415	380.738	402.415
30.407 Corporine white	1 Meter	2.837	2.768	2.866	2.899	3.000	3.000	2.823	2.657	2.575	2.649	2.739	2.739	3.000	3.000	3.000	3.000
305 Footwear																	
30.501 Men's leather shoes	1 pair	147.972	147.972	60.741	60.894	60.000	60.000	60.741	60.894	60.741	60.894	60.741	60.894	60.741	60.894	60.741	60.894
30.502 Women's leather shoes	1 pair	64.806	64.806	32.532	32.532	35.000	35.000	32.532	32.532	32.532	32.532	32.532	32.532	32.532	32.532	32.532	32.532
30.503 Child leather shoes	1 pair	54.999	54.999	30.960	29.789	35.000	35.000	30.960	29.789	30.960	29.789	30.960	29.789	30.960	29.789	30.960	29.789
30.504 Adult slippers	1 pair	4.150	4.015	4.339	4.339	4.000	4.000	4.500	4.500	3.912	3.966	4.000	4.000	4.000	4.000	3.000	3.000
4 Rent, Fuel & Utilities																	
401 Rent																	
40.101 Rent 1: Single room	1 Month			73.210	73.210	34.856	33.713	48.862	49.437	44.888	45.256	54.058	57.025	25.000	25.000	29.710	29.710
40.102 Rent 2: Double room	1 Month			120.276	120.276	62											

ITEM	UNIT	CENTRE																	
		KHI		KML		JINJA		MBALE		MASAKA		MBARARA		GULU		ARUA			
		Jun 2013	July 2013	Jun 2013	July 2013	Jun 2013	July 2013	Jun 2013	July 2013	Jun 2013	July 2013	Jun 2013	July 2013	Jun 2013	July 2013	Jun 2013	July 2013		
40,106	Rent 3: Semi detached	1 Month	416,017	416,017															
402	House Repair &																		
40,201	Cement	50 kg Bag	27,746	27,620	27,493	27,371	27,000	26,832	27,000	27,000	28,166	28,249	28,832	28,663	29,663	29,663	30,583	30,500	
40,202	Paint	4 ltr	7,321	7,000	6,724	6,882	6,000	6,000	7,000	7,000	5,815	5,682	11,000	11,000	10,000	10,330	7,000	7,000	
40,203	Iron Sheets	30 gauge piece	27,460	28,058	26,848	26,707	26,664	27,000		25,329	24,662	26,495	26,495	18,624	18,495	28,000	26,637	26,000	27,000
40,205	Timber		10,635	10,635															
403	Fuel, elec. & water																		
40,301	Electricity	150kw	89,288	89,288	89,288	89,288	89,288	89,288	89,288	89,288	89,288	89,288	89,288	89,288	89,288	89,288	89,288	89,288	89,288
40,302	Parafin, Kerosene	One ltr	2,772	2,774	2,772	2,774	2,735	2,802	2,752	2,735	2,764	2,792	2,819	2,820	2,799	2,771	2,962	2,927	
40,303	Charcoal	Sack/Kg	64,146	65,678	758	753	677	699	691	710	519	548	735	684	670	595	485	451	
40,304	Water metered		8,525	10,060	8,525	10,060	8,525	10,060	8,525	10,060	8,525	10,060	8,525	10,060	8,525	10,060	8,525	10,060	
4,305	Water unmetered	20 Ltr			114	150	200	200	200	200	144	144	126	126	200	200	200	200	
40,307	Fire wood	Kg	174	200	174	200	204	239	162	182	158	159	290	269	141	138	160	178	
40,308	Propene gas	12-15Kg	106,413	106,413															
5	Household & Personal Soap, toiletries etc																		
501	Washing soap	Kg	3,659	3,586	3,486	3,527	4,131	4,190	3,606	3,610	3,571	3,571	3,571	3,760	3,333	3,333	3,580	3,648	
50,102	Detergent Powder	500g/100 g	7,046	7,265	1,097	1,087	1,000	1,000	1,000	1,000	1,000	1,000	1,250	1,160	1,000	1,000	727	727	
50,103	Bathing soap	225g	2,533	2,575	2,474	2,503	2,500	2,500	2,500	2,500	2,500	2,500	2,466	2,500	2,500	2,500	2,363	2,363	
50,104	Toothpaste	25 ml	2,486	2,427	1,500	1,491	1,366	1,333	1,500	1,500	1,500	1,500	1,500	1,500	1,200	1,232	1,232	1,232	
50,105	Toilet paper	Big/Roll	1,063	1,105	500	489	500	500	500	500	431	400	431	400	500	500	500	500	
50,106	Shoepolish	100 ml	4,658	4,646	4,456	4,414	4,500	4,500	4,500	4,500	4,160	4,000	4,309	4,327	4,913	4,827	4,327	4,327	
50,107	Matches	Box	875	824	100	100	100	100	100	100	100	100	100	100	100	100	100	100	
50,108	Sanitary pads	1 pkt	2,602	2,516	2,519	2,702	2,500	2,500	2,500	2,500	2,596	2,500	2,500	2,500	3,411	3,158	2,321	2,321	
50,109	Vaseline	250 g	6,549	6,598	6,718	6,896	6,896	6,749	6,500	6,663	3,597	3,826	6,329	6,329	3,500	3,500	3,000	3,000	
50,110	Travel bags	one	18,664	19,900	16,548	16,321	15,000	15,000	15,000	15,000	15,000	15,000	13,416	12,961	20,616	20,616	11,641	12,000	
	Hair food	Tin	1,861	1,532	1,638	1,771	1,500	1,500	1,366	1,400	1,232	1,200	1,392	1,500	1,500	1,651	1,500	1,500	
	Skin powder	100 g	6,395	6,489															
	Hand & Body lotion	250 mls	8,336	8,642															
	Baby oil	250 g	11,961	11,961															
	Deodorant	50 mls	9,453	9,438															
502	HH textile & furnit.																		
50,201	Textile 1(Jinja plain)	Meter	5,882	5,824	5,889	5,680	5,000	5,000	5,828	5,662	5,500	5,500	5,477	5,477	5,000	5,000	8,000	8,000	
50,202	Textile 2(Corporine)	Meter	2,898	2,732	2,866	2,880	3,000	3,000	2,657	2,657	2,575	2,550	2,739	2,739	3,000	3,000	3,000	3,000	
50,203	Blankets	one	50,399	48,094	14,180	14,300	13,976	13,976	12,490	12,658	12,945	13,000	10,000	10,000	12,000	12,000	10,000	10,000	
50,204	Bedding mattress	one	866,511	866,511	71,869	72,308	55,526	56,021	58,746	59,804	61,851	61,851	56,249	56,676	79,824	79,824	89,958	91,607	
50,205	Furnit.1: Bed (wooden)	one	1,797,220	1,797,220	218,016	219,033	163,885	157,291	128,575	126,206	160,155	161,887	120,190	120,190	103,601	103,601	173,196	177,306	
50,206	Furnit.2: Side Board	one			501,810	501,810	453,508	484,273	593,289	589,649	314,980	334,716	269,178	269,178	346,410	346,410	727,946	714,858	
50,207	Plastic carpet	Meter			6,976	6,994	7,163	7,329	6,649	6,829	6,745	7,000	5,916				7,483	7,483	
50,208	Furnit.3: Coffee set	one	646,217	646,217	227,608	227,608	261,554	270,779	221,803	225,732			168,702	168,702	173,205	173,205	225,165	244,437	
50,209	Furnit.4: Johnston set	one			482,745	493,242	324,147	323,485	234,028	242,797	250,000	273,861	207,112	207,112	223,607	223,607	307,224	307,224	
50,210	Furnit.5: Dinning table	one	2,911,128	2,936,780															
50,211	Furnit.6: Sofa set	one	3,741,657	3,741,657															
50,212	Papyrus Mat	one												2,823	2,823				
50,213	Woolen Carpet	one	339,853	350,000															
53	HH & pers.equip, nes																		
50,301	Electric kettle / Jug	one	79,774	82,095	28,206	30,973													
50,302	Charcoal stove	one			9,011	9,305	7,000	6,585	5,662	5,485	5,745	5,485	5,000	5,000	7,163	7,489	8,000	8,000	
50,303	Plastic mug	one			756	734	610	626	500	500	713	732	665	682	500	565	765	765	
50,304	Sufuria	one	8,418	8,394	8,040	7,855	7,000	6,663	8,000	8,000	5,828	5,986	6,316	5,828	6,966	6,663	5,398	5,161	
50,305	Jerrycan	one	6,881	6,820	6,442	6,716	7,246	7,500	7,000	7,000	7,000	7,000	6,316	6,487	6,162	6,663	6,500	6,500	
50,306	Electric Bulb	one	1,536	1,500	1,491	1,469	1,500	1,500	1,392	1,392	1,293	1,200	1,500	1,500	1,500	1,500			
50,307	Extension cable	one	9,879	10,013	9,511	9,405	8,000	8,000	6,829	6,829	8,243	8,367	8,485	8,000	12,000	10,954			
50,308	Television Set (Coloured)	one	464,758	464,758	397,906	397,906	350,000	350,000	317,288	317,288	317,069	317,069	234,521	234,521	409,878	409,878	265,665	265,665	
50,309	Electric irons	one	107,177	107,177	60,887	61,742	65,808	65,808	57,217	55,133	58,709	58,709	55,000	55,000	55,964	56,921			
50,310	Dry Cells	1 pair	2,587	2,694	1,455	1,457	1,300	1,300	1,232	1,266	1,315	1,283	1,364	1,328	1,500	1,500	1,160	1,197	
50,311	Radio (Portable)	one			24,225	25,065	25,000	25,000	26,329	25,329	25,000	25,000	22,978	23,495	23,000	23,000	20,000	20,000	
50,312	Hifi Set	one	966,213	966,213															
50,313	Plastic basins	one			5,089	4,870	4,734	4,827	4,160	4,160	4,160	4,000	4,661	4,827	4,000	4,000	3,979	3,979	
50,313	Plastic bucket	one	8,907	8,493															
50,314	Kerosene Lamp	one			15,749	15,401	14,326	14,326	14,659	14,659	16,244	16,244	14,659	15,000	15,000	15,000	15,000	15,000	
50,315	Candles	pkt	2,076	2,000	1,948	1,923													
6	Transport & Taxi & bus fares																		
601	Bus Fare (Long distance)	One way	26,139	25,382	26,139	25,382	19,168	19,778	21,779	21,779	15,683	15,683	17,321	17,321	23,029	23,029	35,000	35,000	
60,102	Motorcycle fares	One way			1,500	1,500	1,149	1,149	1,000	1,000	1,325	1,310	1,225	1,225	2,408	2,408	2,040	2,040	
60,103	Taxifare long distance	One way	19,574	19,574	19,574	19,574	10,000	10,954	12,247	13,416	10,000	10,000	13,925	13,925	17,784				

ITEM	UNIT	CENTRE															
		KHI		KML		JINJA		MBALE		MASAKA		MBARARA		GULU		ARUA	
		Jun 2013	July 2013	Jun 2013	July 2013	Jun 2013	July 2013	Jun 2013	July 2013	Jun 2013	July 2013	Jun 2013	July 2013	Jun 2013	July 2013	Jun 2013	July 2013
60.305 Gear & Diff.Oil	1 litre	12.550	12.550	12.051	11.495	12.130	12.285	11.838	11.838	8.984	8.984	9.817	9.683				
60.308 Adult Bicycle	one			219.866	237.933	204.390	200.357	245.688	242.297	193.641	193.641	196.610	196.610	208.807	211.554	226.826	226.048
60.307 Children Bicycle	one	162.443	162.443														
60.308 Bicycle tyre	one			17.303	16.980												
60.309 Bicycle tube	one					4.023	4.023	4.519	4.676	3.065	2.949	3.391	3.350	15.000	15.162	10.262	10.268
60.311 Bicycle Spoke	gross					9.074	9.074	8.745	8.745	8.045	8.207	9.487	9.487	5.272	5.111	4.327	4.327
60.312 Bicycle Ball bearings	1 dozen					658	658	602	602	669	651	500	500	1.063	1.063	900	900
60.201 Fixed Telephone charges		198	198	198	198	198	198	198	198	198	198	198	198	198	198	198	198
60.202 Mobile Telephone charges		229	229	229	229	229	229	229	229	229	229	229	229	229	229	229	229
60.203 Internet services	per hour	3,434	3,434	1,648	1,648	1,500	1,500	1,570	1,570	1,694	1,694	1,543	1,543	1,500	1,500	1,500	1,500
60.313 Motor cars (2nd hand)	one	14,129,907	14,192,331														
60.314 Parking fees	1st 2 hours	19,442	19,442														
8	Health, Entertainment & Health																
81	Treatment for Diabetes																
8.101 Drug: Glibenclamide	Dose	3,230	3,230														
8.102 Drug: Metformin	Dose	3,018	3,018														
8.103 Drug: Insulin Zinc	Dose	18,043	18,043														
812	Treatment for																
8.104 Drug: Bendrofluazide	Dose	979	979														
8.105 Drug: Propranolol (inderal)	Dose	1,038	1,038														
813	Treatment for Malaria																
8.106 Drug: Coartem	Dose			10,091	10,091	6,053	6,053	3,159	3,159	8,050	8,050	13,856	13,856	10,295	10,295	7,071	7,071
8.107 Drug: Quinine	Dose			9,855	9,855	6,797	6,797	7,853	7,853	7,469	7,469	6,494	6,494	6,205	6,205	9,110	9,110
8.108 Drug: Fansider	Dose			1,787	1,787	1,714	1,714	2,432	2,432	1,263	1,263	1,813	1,813	1,301	1,301	1,275	1,275
814	Treatment for intestinal																
8.110 Drug: Mabendazole	Dose			1,020	1,020	488	488	1,719	1,719	523	523	630	630	629	629	478	478
	Dose			2,515	2,515	2,081	2,081	2,340	2,340	2,080	2,080	2,449	2,449	1,986	1,986	1,456	1,456
815	Treatment for coughs																
8.112 Drug: Septrin	Dose			2,627	2,627	1,414	1,414	1,414	1,414	1,619	1,619	1,682	1,682	1,560	1,560	1,149	1,149
8.113 Drug: Cough syrup	Dose			3,172	3,172	3,225	3,225	3,390	3,390	2,239	2,239	2,884	2,884	2,199	2,199	1,994	1,994
8.114 Drug: Amoxicillin	Dose			5,416	5,416	3,210	3,210	3,519	3,519	2,910	2,910	3,000	3,000	3,173	3,173	3,253	3,253
816	Treatment for Aches &																
8.116 Drug: Paracetamol	Dose			1,780	1,780	843	843	1,558	1,558	1,088	1,088	1,204	1,204	684	684	438	438
	Dose			1,754	1,754	523	523	1,332	1,332	1,258	1,258	1,584	1,584	898	898	618	618
81(g)	Treatment for Diarrhoea																
8.118 Drug: Metronidazole	Dose			3,251	3,251	2,154	2,154	1,817	1,817	2,289	2,289	2,523	2,523	1,787	1,787	1,519	1,519
	Dose			3,235	3,235	974	974	1,694	1,694	2,141	2,141	2,546	2,546	1,336	1,336	1,800	1,800
81(h)	Treatment for skin																
8.119 White field ointment	Dose			3,000	3,000	2,060	2,060	1,906	1,906	1,917	1,917	3,000	3,000	1,351	1,351	2,096	2,096
81(i)	Treatment for Peptic																
8.120 Drug 1: Magnesium	Dose	3,232	3,232	2,831	2,831	2,366	2,366	1,612	1,612	1,588	1,588	1,485	1,485	985	985	727	727
8.121 Drug 2: Omeprazole	Dose	20,923	20,923	19,440	19,440	16,165	16,165	8,298	8,298	8,013	8,013	10,734	10,734	10,857	10,857	12,332	12,332
8.122 Drug 3: Amoxyciline	Dose	7,769	7,769	6,489	6,489	4,200	4,200	4,273	4,273	4,200	4,200	4,200	4,200	4,442	4,442	5,232	5,232
81(j)	Obstetrics & Gynaecology																
8.124 Antenatal care	1 Person	314,265	314,265	40,911	40,911	5,477	5,477	30,827	30,827	6,708	6,708	38,341	38,341	7,348	7,348	5,000	5,000
8.125 Normal deliveries	1 Person	843,433	843,433	140,713	140,713	31,623	31,623	72,841	72,841	31,431	31,431	173,205	173,205	35,400	35,400	5,000	5,000
8.126 Deliveries with caesarian	1 Person	1,966,095	1,966,095	695,205	695,205	354,902	354,902	529,849	529,849	219,000	219,000	695,872	695,872	605,510	605,510	50,000	50,000
81(k)	Dental care charges																
8.127 Tooth Extraction	1 Person			15,037	15,037	10,000	10,000	21,400	21,400	10,000	10,000	15,000	15,000	9,924	9,924	6,000	6,000
8.128 Temporally filling	1 Person	64,022	64,022														
8.129 Permanent filling	1 Person	79,126	79,126														
81(l)	Other Medical charges																
8.130 Hospitalisation fee	1 Person	81,244	81,244	8,377	8,377	10,000	10,000	7,319	7,319	10,000	10,000	7,746	7,746	22,736	22,736	15,000	15,000
8.131 Consultation fee	1 Person	19,310	19,310	5,308	5,308	4,472	4,472	4,424	4,424	4,472	4,472	8,143	8,143	3,584	3,584	3,064	3,064
8.123 Laboratory test HIV &	1 Person	30,652	30,652														
8.109 Laboratory test (malaria)	1 Person			3,482	3,482	2,823	2,823	2,140	2,140	2,449	2,449	2,711	2,711	2,174	2,174	1,565	1,565
705	Other Educ expenses																
70.501 School uniform	One	25,444	25,444	25,444	25,444	23,333	23,333	23,333	23,333	22,635	22,635	21,041	21,041	33,333	33,333	22,857	22,857
70.502 Uniform material	Meter	4,039	4,106	4,074	4,012	4,000	4,000	4,000	3,826	3,623	3,500	3,742	3,742	5,000	5,477	4,000	4,000
70.503 Exercise books	One	7,658	7,297	307	318	200	200	200	200	200	200	200	200	200	200	200	200
70.504 Ream Paper	One	15,016	15,978	14,536	15,355	8,000	8,000	8,000	8,000	9,491	10,884	7,306	7,489	9,000	9,000	8,000	8,000
70.505 Pen	One	491	491	486	477	400	400	500	500	431	400	431	400	500	500	431	464
70.506 Geometry Set	One	2,285	2,301	2,224	2,321	1,500	1,633	1,651	1,500	1,500	1,694	1,651	1,651	1,817	1,817	1,732	1,732
70.507 Text book	One	37,476	37,476	37,476	37,476	28,958	28,958	34,503	34,034	37,476	37,476	37,476	37,476	37,476	37,476	46,795	48,095
70.508 Photocopy	One	100	100	100	100	100	100	100	100	100	100	100	100	112	112	100	100
70.509 School bag	One	10,309	9,967	9,805	9,926												
70.510 Metallic suit case	One	141,589	141,589	41,897	39,136	31,582	33,247	41,602	41,602	40,000	40,000	42,426	42,426	70,332	67,439	65,000	60,000

ITEM	UNIT	CENTRE															
		KHI		KML		JINJA		MBALE		MASAKA		MBARARA		GULU		ARUA	
		Jun 2013	July 2013	Jun 2013	July 2013	Jun 2013	July 2013	Jun 2013	July 2013	Jun 2013	July 2013	Jun 2013	July 2013	Jun 2013	July 2013	Jun 2013	July 2013
802 Other goods & serv.																	
80.201 Newspaper	One	1,500	1,500	1,500	1,500	1,500	1,500	1,500	1,500	1,500	1,500	1,500	1,500	1,500	1,500	1,500	1,500
80.202 Soccer admission	One	5,000	5,000	5,000	5,000	5,000	5,000	5,000	5,000	1,000	1,000	1,732	1,732				
80.203 Theatre admission	One	31,623	31,623	14,142	15,131												
80.204 Film show	One	19,730	19,730	200	200	500	500	300	300	200	200	500	500	100	100	300	300
80.205 Disco fee admission	One	15,431	15,431	13,554	13,554	2,000	2,000	3,000	3,000	3,873	3,873	5,477	5,477	2,904	3,141	4,217	5,000
80.206 Laundry and Dry cleaning	One	9,133	9,133	10,637	10,637	6,462	6,279	5,253	5,137	3,620	3,620	7,035	7,103				
80.207 Lodging services	Per Night	366,657	365,950	32,411	32,411	14,052	14,052	17,962	17,424	9,932	10,009	16,032	16,032	24,414	24,414	16,478	16,478
80.208 Photographs	2 Copies	10,000	10,000	3,409	3,409	2,608	2,608	2,376	2,376	2,593	2,823	2,711	2,711			2,376	2,305
80.209 Video coverage		600,000	624,500	312,866	312,866	288,450	288,450	275,000	275,000	223,028	221,976	387,298	387,298			144,062	144,062
80.210 Radio announcements		7,071	7,071	2,000	2,000	2,289	2,289	4,309	4,309	1,957	1,957	4,642	4,642			5,439	5,439
Saloons																	
80.211 Straight perm (Retouch)	1 Head	46,058	46,058	20,134	19,580	16,939	16,939	23,410	24,280	24,495	24,495	26,207	26,207	18,028	18,028	15,000	15,000
80.212 Plaiting	1 Head	56,924	56,924	18,422	18,734	18,612	18,612	20,645	21,411	24,495	26,833	18,420	19,574	20,000	20,000	15,000	15,000
80.213 Straight perm (Treatment)	1 Head	28,117	28,117	8,637	8,637	5,593	5,593	8,040	8,040	11,832	10,247	9,283	9,283	10,000	10,000	10,000	10,000
80.214 Men's hair cut	1 Head	8,367	8,367	3,550	3,684	1,189	1,189	2,551	2,551	2,884	2,884	2,621	2,621	2,236	2,236	1,732	1,732
Meals in Restaurants																	
80.301 Soda	300 ml	3,139	3,139	1,401	1,401	1,000	1,000	1,369	1,369	1,251	1,251	1,176	1,176	1,355	1,355	1,293	1,293
80.302 Tea	150ml cup	8,625	8,625	1,587	1,587	1,000	1,000	1,047	1,047	1,176	1,176	1,375	1,375	1,565	1,655	1,693	1,726
80.303 Passion fruit juice	1 glass	7,037	7,037	1,831	1,831	1,000	1,000	1,817	1,817	1,355	1,355	1,619	1,698	1,934	1,934	1,000	1,000
80.304 Breakfast (Food)		33,977	33,977	2,711	2,711	2,000	2,000	3,224	3,224	2,000	2,000	1,782	1,782	3,080	3,080	1,844	1,844
80.305 Lunch		36,429	36,534	5,765	6,035	4,121	3,971	4,717	4,717	4,584	4,584	5,277	5,277	5,384	5,384	4,453	4,453
72 Education		Term I 2.013	Term II 2.013	Term I 2.013	Term II 2.013	Term I 2.013	Term II 2.013	Term I 2.013	Term II 2.013	Term I 2.013	Term II 2.013	Term I 2.013	Term II 2.013	Term I 2.013	Term II 2.013	Term I 2.013	Term II 2.013
701 Pre-primary & primary pre-primary	Pupil	123,719	126,700	123,719	126,700	48,663	48,663	116,271	117,016	109,133	106,217	291,897	286,588	108,028	108,028	96,672	98,090
70.102 Primary Day Govt	Pupil	41,542	41,722	41,542	41,722	62,470	61,833	44,924	51,699	47,439	43,474	71,536	79,249	30,625	33,318	52,655	52,655
70.103 Primary Day Pvt	Pupil	41,542	41,722	41,542	41,722	86,104	87,890	44,924	51,699	177,416	182,580	71,536	79,249	30,625	33,318	52,655	52,655
70.104 Primary Boarding Govt	Pupil	361,516	348,944	361,516	348,944	333,203	334,661	319,011	329,825	213,092	214,903	370,046	390,489	250,839	250,839	201,762	217,762
70.105 Primary Boarding Pvt	Pupil	361,516	348,944	361,516	348,944	324,524	329,048	319,011	329,825	336,415	351,154	370,046	390,489	250,839	250,839	201,762	217,762
702 Secondary education day																	
70.201 Secondary Day Govt	Student	331,548	360,308	331,548	360,308	189,050	253,800	162,179	163,336	127,355	141,344	124,167	124,167	219,241	206,876	117,729	125,034
70.202 Secondary Day Pvt	Student	331,548	360,308	331,548	360,308	133,155	133,155	162,179	163,336	127,355	141,344	124,167	124,167	219,241	206,876	117,729	125,034
70.203 Secondary Boarding Govt	Student	726,739	794,523	726,739	794,523	527,744	536,211	447,449	480,123	427,369	438,766	774,218	769,274	380,441	379,180	225,238	252,127
70.204 Secondary Boarding Pvt	Student	726,739	794,523	726,739	794,523	527,744	536,211	447,449	480,123	427,369	438,766	418,224	403,652	380,441	379,180	225,238	252,127
703 Secondary education day																	
70.301 Secondary Day Govt	Student	219,598	373,910	219,598	373,910	223,500	269,250	125,989	123,277	190,835	210,556	181,517	181,517	258,028	213,741	133,427	136,486
70.302 Secondary Day Pvt	Student	219,598	373,910	219,598	373,910	146,744	146,744	125,989	123,277	190,835	210,556	181,517	181,517	258,028	213,741	133,427	136,486
70.303 Secondary Boarding Govt	Student	745,552	831,821	745,552	831,821	546,967	556,199	510,379	535,768	449,365	465,522	772,595	782,239	385,257	383,981	231,306	258,920
70.304 Secondary Boarding Pvt	Student	745,552	831,821	745,552	831,821	546,967	556,199	510,379	535,768	449,365	465,522	429,197	427,926	385,257	383,981	231,306	258,920
704 Tertiary Education																	
70.401 Bachelors Degree	Student	735,458	735,458	735,458	735,458	739,305	739,305	858,929	858,929	888,570	888,570	687,163	687,163	849,729	849,729	709,244	709,244
70.402 Diploma	Student	422,909	422,909	422,909	422,909	425,121	425,121	493,907	493,907	510,952	510,952	395,137	395,137	488,617	488,617	407,834	407,834
70.403 Other Education Computer courses	Student	323,580	323,580	323,580	323,580	274,955	274,955	216,700	208,006	301,247	301,247	242,265	242,265	269,505	284,613	209,508	209,762

KHI - Kampala High Income
KML- Kampala Middle and Low
Pvt - Privat
Govt- Government

KHI Prices
Blankets- MINT
Electric Iron- Steam Iron
Coffee- Nescafe
Tea leaves- Tea bags

Source: Uganda Bureau of Statistics