



UGANDA BUREAU OF STATISTICS



CONSUMER PRICE INDEX

APRIL 2013

Uganda Bureau of Statistics,
Plot 9, Colville Street
P.O. Box 7186,
Kampala
Tel: 0414 - 706000
Fax: 0414 - 237553
E-mail: ubos@ubos.org
Website: www.ubos.org

Contents

FOREWORD	III
PRESS RELEASE	1
RELEASE CALENDAR FOR CPI 2013	2
TABLE 1 PRICE PERCENTAGE CHANGES BY CENTRE MARCH AND APRIL, 2013_ (BASE: 2005/2006 = 100).....	3
TABLE 2: MONTHLY PRICE PERCENTAGE CHANGES BY GROUP, APRIL, 2013 (BASE: 2005/2006 = 100)	3
TABLE 3: COMPOSITE CONSUMER PRICE INDEX (CPI) (BASE: 2005/2006 =100)	4
TABLE 4 : COMPOSITE CPI BREAKDOWN BY MAJOR GROUPS,(BASE 2005/2006=100)	5
TABLE 5: COMPOSITE CPI BREAKDOWN BY MAJOR GROUP ANNUAL PERCENTAGE CHANGES	6
TABLE 6: COMPOSITE CPI FOR FOOD AND NON FOOD, (BASE 2005/2006=100)	7
TABLE 7: COMPOSITE CPI BREAKDOWN FOR FOOD CROPS, OTHER GOODS AND SERVICES,(BASE 2005/2006=100).....	8
TABLE 8: CONSUMER PRICE INDEX - KAMPALA HIGH INCOME (BASE: 2005/2006 =100).....	3
TABLE 9 : CONSUMER PRICE INDEX KAMPALA MIDDLE & LOW INCOME (BASE: 2005/2006 =100).....	10
TABLE 10: CONSUMER PRICE INDEX JINJA (BASE: 2005/2006 =100)	11
TABLE 11: CONSUMER PRICE INDEX MBALE (BASE: 2005/2006 =100)	12
TABLE 12: CONSUMER PRICE INDEX MASAKA (BASE: 2005/2006 =100).....	13
TABLE 13: CONSUMER PRICE INDEX MBARARA (BASE: 2005/2006 =100)	14
TABLE 14: CONSUMER PRICE INDEX GULU (BASE: 2005/2006 =100).....	15
TABLE 15 : CONSUMER PRICE INDEX ARUA (BASE: 2005/2006 =100).....	16
TABLE 16: AVERAGE RETAIL MARKET PRICES (UG. SHS) FOR CPI COMMODITIES - PAGES 1-5	17

FOREWORD

This publication provides the monthly Consumer Price Indices for Uganda (Composite) and for the eight baskets of Kampala High Income, Kampala Low and Middle Income, Jinja, Mbale, Masaka, Mbarara, Gulu and Arua. All the baskets are for the urban households.

The current Consumer Price Index was rebased from (July 1997 to June 1998 = 100) to (July 2005 to June 2006 = 100) using weights derived from the 2005/2006 Uganda National Household Survey data. During the rebasing exercise, Kampala was decomposed into two baskets. In addition, Arua centre was incorporated into the Index. The number of elementary aggregates in the revised Index was increased from 125 to 276.

At the elementary aggregate level, the indices are computed using the Jevons (Geometric Mean) method for all items within the elementary aggregates. The modified Laspeyres index formula is used to compute higher level indices. The National CPI is computed as a weighted average of the eight baskets mentioned above.

Ben Paul Mungyereza
EXECUTIVE DIRECTOR



UGANDA BUREAU OF STATISTICS

P.O. Box 7186, Kampala, Tel: 0414 - 706000, Fax: 0414 - 237553, Email: ubos@ubos.org, Website: www.ubos.org



CONSUMER PRICE INDEX - APRIL 2013

PRESS RELEASE

ANNUAL INFLATION RATES

The Annual Headline Inflation rate for the year ending April 2013 decreased to 3.4% from the 4.0% registered for the year ended March 2013. This was largely attributed to the decrease in the Annual Core (Underlying) Inflation rate from 6.8% for the year ended March 2013 to 5.8% for the year ending April 2013. The Annual Food Crops Inflation rate rose to -7.5% for the year ending April 2013 compared to -8.5% that was registered for the year ended March 2013. However, the Annual Energy, Fuel and Utilities (EFU) Inflation rose to 1.8% for the year ending April 2013 from the -2.0% recorded for the year ended March 2013. (Table 1)

ANNUAL HEADLINE INFLATION RATES BY CENTRE

Kampala High Income registered the highest Annual Inflation rate of 6.1% compared to 6.2% in March 2013. This was driven by high price levels for beverages, rent, household textile, furniture, transport fares and education charges. Jinja recorded the second highest Annual Inflation rate of 4.5% up from 4.4% in March 2013. This was driven by high price levels for beverages, footwear, rent, unmetered water, firewood and education charges. Masaka recorded an Annual Inflation rate of 3.7% similar to March 2013. The main inflation drivers were high price levels for beverages, new clothing and health services. For other centres (Table 1).

MONTHLY INFLATION

The Monthly Headline Inflation for the month of April 2013 rose by 1.4% from the 0.9% increase recorded in March 2013. The Monthly Core Inflation increased by 0.2% in April 2013 from the 0.3% increase recorded in March 2013. The Monthly Food Crops Inflation registered an 8.8% rise in April 2013 up from 3.9% in March 2013. Similarly, the Monthly EFU Inflation increased by 0.1% in April 2013 from the 0.9% increase recorded in March 2013. (Table 1)

The increase was mainly attributed to increased prices of matooke, Irish potatoes, sweet potatoes, cabbages, tomatoes, pineapples, beans and fish in most centres mainly due to decreased supplies on the market. However, decrease in prices were recorded for sweet bananas, passion fruits, avocado, onions, green pepper, bitter tomatoes, carrots, maize flour, bread and sugar. Overall, inflation in the monthly composite food group registered a rise of 3.7% (Table 6).

In the non-food category, Inflation rose by 0.4%. This was driven by the increase in prices of new clothing, firewood, kerosene, gas household textiles, furniture and rental charges in most centres.

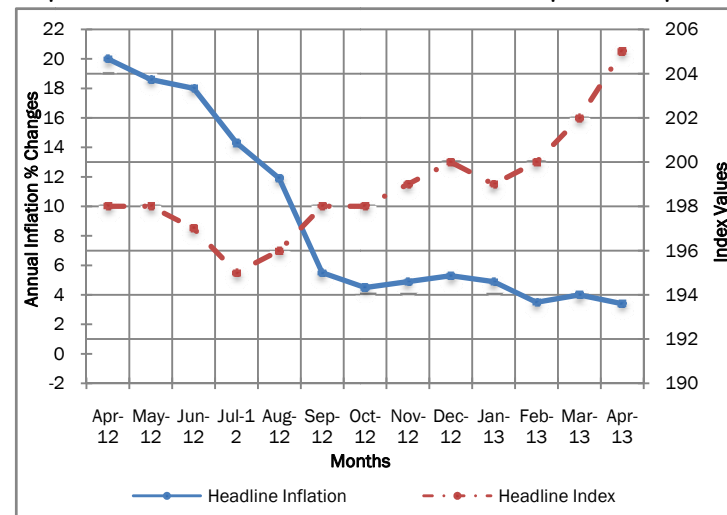
FOOD AND NON-FOOD INFLATION RATES

The Annual Food Inflation rate dropped further to a -2.6% for the year ending April 2013 compared to -0.9% for the year ended March 2013. The Non- Food Inflation increased to 6.6% for the year ending April 2013 compared to 6.5% recorded for the year ended March 2013 (Table 6).

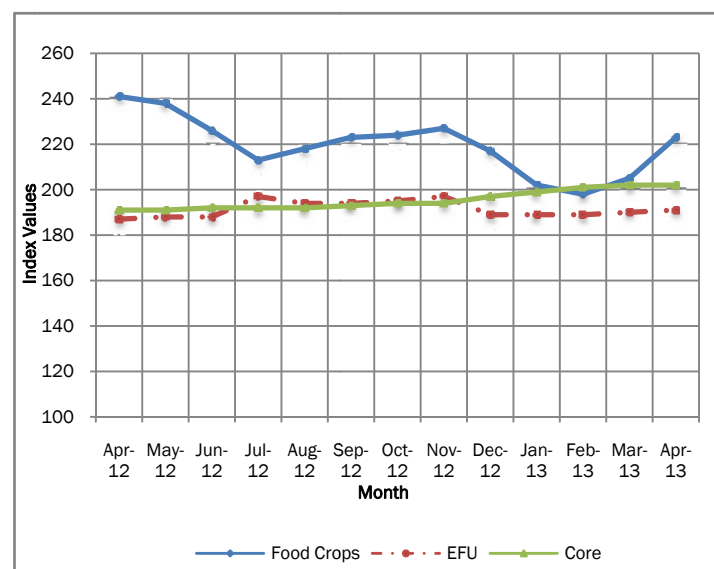
OTHER GOODS AND SERVICES INFLATION RATES

The Annual Inflation rate for Other Goods decreased to 3.5% in April 2013 compared to 5.0% recorded in March 2013. For Services, the Annual Inflation rate recorded was 7.9% in April 2013 compared to 7.6% registered in March 2013 (Table 7).

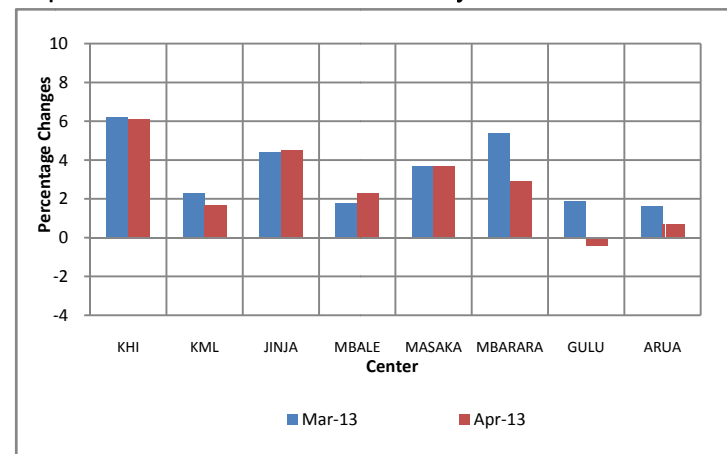
Graph 1: Headline Index and Annual Inflation Rates Apr. 2012- Apr. 2013



Graph 2: Food Crops, Core and EFU Indices Apr. 2012- Apr. 2013



Graph 3: Annual Headline Inflation Rates by Centre



RELEASE CALENDAR FOR CPI 2013

Month	Expected Date	Actual Date
January	31 st	31 st
February	28 th	28 th
March	28 th	28 th
April	30 th	30 th
May	31 st	
June	28 th	
July	31 st	
August	30 th	
September	30 th	
October	31 st	
November	29 th	
December	31 st	

Table 1: Price percentage changes by Centre March and April, 2013 (BASE: 2005/2006 = 100)

Centre	Headline inflation				Core inflation				Food crops and related items				Energy, Fuel & Utilities			
	<i>(All items)</i>				<i>(excl. Food Crops and EFU)</i>											
	Month of		Year ending		Month of		Year ending		Month of		Year ending		Month of		Year ending	
	Mar	Apr	Mar	Apr	Mar	Apr	Mar	Apr	Mar	Apr	Mar	Apr	Mar	Apr	Mar	Apr
COMPOSITE	0.9	1.4	4.0	3.4	0.3	0.2	6.8	5.8	3.9	8.8	-8.5	-7.5	0.9	0.1	-2.0	1.8
KHI	0.8	1.2	6.2	6.1	0.4	0.3	8.7	8.3	4.9	9.0	-7.4	-6.0	1.0	0.0	-1.6	1.5
KML	0.9	1.8	2.3	1.7	0.3	0.7	5.6	4.5	4.5	8.3	-11.8	-10.9	0.7	0.2	-3.1	1.4
Jinja	0.5	0.1	4.4	4.5	0.8	-0.7	8.5	6.0	-1.1	4.1	-11.2	-1.8	0.9	0.4	-2.4	2.1
Mbale	0.4	0.9	1.8	2.3	1.1	-0.5	4.5	3.8	-4.0	9.8	-11.8	-5.4	1.2	0.1	-1.3	2.4
Masaka	1.3	3.4	3.7	3.7	0.6	0.6	4.8	4.3	5.8	21.6	-1.9	1.0	1.1	0.1	1.9	3.4
Mbarara	0.9	1.6	5.4	2.9	0.3	0.0	7.7	5.9	4.0	10.0	-3.2	-8.5	1.1	-0.2	-1.1	1.8
Gulu	1.0	2.0	1.9	-0.4	-0.2	0.4	6.0	4.0	5.9	8.0	-10.5	-13.6	0.3	0.9	-4.3	2.5
Arua	1.5	-0.8	1.6	0.7	-0.8	-1.2	3.3	3.0	10.5	0.3	-3.2	-6.8	0.1	-0.1	-5.6	2.4

Source: Uganda Bureau of Statistics

Table 2: Monthly price percentage changes by Group April, 2013 (BASE: 2005/2006 = 100)

ITEM/CENTRE	COMPOSITE	KHI	KML	JINJA	MBALE	MASAKA	MBARARA	GULU	ARUA
Food	3.7	4.3	3.8	-0.6	3.0	10.6	3.3	4.0	-0.3
Beverages & tobacco	0.2	-0.2	0.9	-0.1	-0.6	0.1	1.3	2.7	-6.2
Clothing & footwear	1.4	2.1	1.1	-0.5	1.9	0.7	2.1	1.0	-0.5
Rent, fuel & utilities	0.8	-0.6	1.7	1.8	-1.7	-0.1	4.1	-0.3	-0.6
Household and personal goods	0.9	2.2	0.9	1.1	0.3	0.1	-1.1	0.1	-0.4
Transport & communication	0.0	0.0	0.4	-1.4	0.4	0.1	-1.0	0.0	1.2
Education	-0.1	0.0	-0.1	0.0	-0.3	0.3	-0.3	0.0	0.0
Health, Entertainment & others	0.3	0.4	0.2	1.3	-0.2	0.8	0.0	-0.1	-0.1

Source: Uganda Bureau of Statistics

Note:

KHI: Kampala High Income

KML: Kampala Middle and Low income

Table 3: Composite Consumer Price Index (CPI) (Base: 2005/2006 =100)

	Food	Beverages and tobacco	Clothing and footwear	Rent, Fuel and Utilities	H.hold and personal goods	Transport and communication.	Education	Health ,entert. & Others	All items index	Monthly % change	Annual % change	
Weights	27.1558	4.7246	4.4279	14.8374	4.5009	12.8259	14.6940	16.8335	100.0000			
Calendar year												
2010	165.44	132.30	129.49	153.05	147.63	123.25	131.33	142.17	145.18		4.0	
2011	218.92	153.82	164.48	177.35	181.69	117.55	141.91	164.61	172.29		18.7	
2012	237.62	179.11	191.07	214.19	210.34	133.68	164.09	190.60	196.43		14.0	
Financial year												
2009/2010	168.92	128.40	127.33	148.56	142.99	126.02	127.68	136.05	143.99		9.4	
2010/2011	183.92	138.59	139.44	159.30	159.86	115.01	135.21	151.04	153.39		6.5	
2011/2012	237.32	171.19	189.41	202.18	201.24	128.57	152.04	179.85	189.48		23.5	
Monthly												
2010	Jan	173.33	128.66	128.83	145.16	143.18	124.03	125.02	136.25	144.00	-0.6	8.9
	Feb	168.15	129.36	126.55	151.13	143.98	124.75	131.55	137.04	144.58	0.4	8.1
	Mar	165.48	130.13	125.86	151.70	144.20	125.64	131.45	137.44	144.16	-0.3	7.6
	Apr	165.63	129.98	125.83	151.17	145.05	128.32	131.32	138.68	144.62	0.3	6.0
	May	161.78	129.76	125.58	150.55	145.36	128.60	131.37	139.87	143.80	-0.6	4.3
	June	159.94	130.01	127.30	153.36	145.66	128.46	131.47	142.17	144.25	0.3	4.2
	July	156.33	129.93	128.69	156.11	146.16	128.48	131.76	142.47	143.79	-0.3	3.3
	Aug	157.64	130.07	129.80	156.64	148.92	128.61	131.90	143.16	144.52	0.5	1.7
	Sep	162.35	133.08	130.46	154.86	149.81	129.63	132.35	144.27	146.07	1.1	0.4
	Oct	167.49	138.62	130.37	155.06	151.16	110.20	132.40	145.58	145.53	-0.4	0.2
	Nov	173.44	139.18	135.02	155.68	151.99	108.67	132.49	146.83	147.37	1.3	1.4
	Dec	173.69	138.80	139.59	155.20	156.13	113.66	132.86	152.28	149.41	1.4	3.1
2011	Jan	179.53	140.13	140.02	157.78	159.63	110.19	133.06	152.20	151.20	1.2	5.0
	Feb	182.99	140.09	140.87	159.79	162.37	112.61	138.16	153.17	153.82	1.7	6.4
	Mar	204.72	142.27	143.07	162.46	166.80	106.22	138.20	155.07	160.25	4.2	11.2
	Apr	216.57	143.39	146.63	165.54	170.65	109.62	138.31	156.85	164.96	2.9	14.1
	May	218.86	143.75	152.54	165.41	175.84	109.72	138.80	159.86	166.81	1.1	16.0
	June	213.37	143.72	156.15	167.05	178.81	112.53	142.24	160.69	166.94	0.1	15.7
	July	219.89	145.63	162.12	169.40	182.53	113.22	143.46	164.29	170.81	2.3	18.8
	Aug	225.32	162.87	170.83	175.25	187.55	114.20	144.12	167.95	175.40	2.7	21.4
	Sep	244.19	167.83	178.73	195.23	194.12	128.09	146.49	173.05	187.46	6.9	28.3
	Oct	244.24	170.90	189.08	204.41	197.22	128.78	146.52	175.02	189.88	1.3	30.5
	Nov	243.47	172.33	193.08	202.84	200.28	129.95	146.61	176.43	190.12	0.1	29.0
	Dec	233.86	172.89	200.61	203.10	204.46	135.50	146.97	180.69	189.77	-0.2	27.0
2012	Jan	228.40	173.95	201.40	212.29	204.35	133.27	147.50	183.95	189.94	0.1	25.6
	Feb	233.54	175.15	201.03	215.72	206.66	131.41	158.67	184.76	193.40	1.8	25.7
	Mar	236.22	175.92	198.80	214.15	207.67	131.79	158.81	184.88	194.14	0.4	21.1
	Apr	249.14	176.71	197.80	213.71	208.68	132.37	158.59	187.35	198.00	2.0	20.0
	May	248.90	179.81	193.68	210.06	210.03	132.14	158.74	190.21	197.87	-0.1	18.6
	June	240.73	180.33	185.80	209.95	211.37	132.10	168.01	189.59	196.99	-0.4	18.0
	July	231.77	179.98	182.36	215.03	211.60	132.91	167.72	190.41	195.27	-0.9	14.3
	Aug	234.81	179.01	181.74	216.13	212.18	132.41	167.95	191.21	196.25	0.5	11.9
	Sep	237.23	178.11	182.92	215.27	213.05	133.25	170.69	194.25	197.82	0.8	5.5
	Oct	238.12	181.57	183.96	216.75	212.26	133.44	170.73	194.66	198.33	0.3	4.4
	Nov	238.64	181.21	190.75	215.92	212.78	136.16	170.82	196.68	199.44	0.6	4.9
	Dec	233.97	187.63	192.65	215.29	213.42	142.95	170.84	199.29	199.76	0.2	5.3
2013	Jan	228.39	194.87	192.50	220.51	215.30	136.65	170.80	202.09	199.25	-0.3	4.9
	Feb	228.84	197.13	191.28	224.21	215.79	136.67	171.52	202.89	200.14	0.4	3.5
	Mar	233.99	200.62	193.12	222.25	216.98	137.96	171.78	203.49	201.87	0.9	4.0
	Apr	242.74	200.94	195.73	223.98	218.86	137.93	171.67	204.14	204.66	1.4	3.4

Source: Uganda Bureau of Statistics.

Table 4 : Composite CPI Breakdown By Major Groups,(Base 2005/2006=100)

		Monthly percentage changes								Annual percentage changes				
		Food Crops	Energy, Fuel & Utilities (EFU)	Core	All Items Index	Food Crops	Energy, Fuel & Utilities (EFU)	Core	All item index	Food Crops	Energy, Fuel & Utilities (EFU)	Core	All items index	
Weights		13.4511	4.9156	81.6333	100.0000									
Calendar year														
	2010	156.41	151.11	142.83	145.18					1.5	1.2	4.8	4.0	
	2011	201.91	166.71	167.48	172.29					29.1	10.3	17.3	18.7	
	2012	221.46	192.64	192.10	196.43					9.7	16.0	14.7	14.0	
Financial year														
	2009/2010	163.80	149.15	140.16	143.99					24.4	-1.2	7.7	9.4	
	2010/2011	176.95	158.14	149.02	153.39					8.0	6.0	6.3	6.5	
	2011/2012	213.73	181.28	185.63	189.48					20.8	14.6	24.6	23.5	
Monthly														
	2010	Jan	170.46	144.07	139.45	144.00	-3.2	-4.0	0.2	-0.6	30.0	-6.5	6.4	8.9
		Feb	162.44	144.66	141.60	144.58	-4.7	0.4	1.5	0.4	21.5	-4.2	6.9	8.1
		Mar	157.90	146.48	141.68	144.16	-2.8	1.3	0.1	-0.3	17.2	-1.4	6.7	7.6
		Apr	158.86	150.39	141.86	144.62	0.6	2.7	0.1	0.3	10.0	3.3	5.7	6.0
		May	152.65	150.78	141.82	143.80	-3.9	0.3	0.0	-0.6	3.9	4.1	4.6	4.3
		June	146.10	150.85	143.39	144.25	-4.3	0.1	1.1	0.3	3.5	3.9	4.6	4.2
		July	139.00	152.40	143.88	143.79	-4.9	1.0	0.3	-0.3	-2.5	1.3	4.6	3.3
		Aug	144.18	153.12	143.85	144.52	3.7	0.5	0.0	0.5	-9.2	1.8	4.0	1.7
		Sep	150.88	153.72	144.54	146.07	4.6	0.4	0.5	1.1	-17.6	2.1	4.2	0.4
		Oct	158.51	156.83	142.53	145.53	5.1	2.0	-1.4	-0.4	-11.4	3.9	2.5	0.2
		Nov	167.97	155.15	143.42	147.37	6.0	-1.1	0.6	1.3	-5.5	3.3	2.9	1.4
		Dec	167.93	154.85	145.92	149.41	0.0	-0.2	1.7	1.4	-4.6	3.2	4.8	3.1
	2011	Jan	172.94	156.52	147.20	151.20	3.0	1.1	0.9	1.2	1.5	8.6	5.6	5.0
		Feb	173.61	158.66	150.08	153.82	0.4	1.4	2.0	1.7	6.9	9.7	6.0	6.4
		Mar	203.88	161.74	152.73	160.25	17.4	1.9	1.8	4.2	29.1	10.4	7.8	11.2
		Apr	221.26	163.82	155.50	164.96	8.5	1.3	1.8	2.9	39.3	8.9	9.6	14.1
		May	220.19	164.51	157.83	166.81	-0.5	0.4	1.5	1.1	44.2	9.1	11.3	16.0
		June	203.04	166.32	160.79	166.94	-7.8	1.1	1.9	0.1	39.0	10.3	12.1	15.7
		July	197.74	168.89	166.26	170.81	-2.6	1.5	3.4	2.3	42.3	10.8	15.6	18.8
		Aug	192.74	169.53	172.60	175.40	-2.5	0.4	3.8	2.7	33.7	10.7	20.0	21.4
		Sep	209.43	172.25	184.37	187.46	8.7	1.6	6.8	6.9	38.8	12.1	27.6	28.3
		Oct	214.48	172.75	186.47	189.88	2.4	0.3	1.1	1.3	35.3	10.1	30.8	30.5
		Nov	211.47	172.71	187.35	190.12	-1.4	0.0	0.5	0.1	25.9	11.3	30.6	29.0
		Dec	202.21	172.86	188.52	189.77	-4.4	0.1	0.6	-0.2	20.4	11.6	29.2	27.0
	2012	Jan	196.23	193.35	188.51	189.94	-3.0	11.8	0.0	0.1	13.5	23.5	28.1	25.6
		Feb	210.70	195.33	190.20	193.40	7.4	1.0	0.9	1.8	21.4	23.1	26.7	25.7
		Mar	224.46	194.37	188.73	194.14	6.5	-0.5	-0.8	0.4	10.1	20.2	23.6	21.1
		Apr	241.47	187.24	190.96	198.00	7.6	-3.7	1.2	2.0	9.1	14.3	22.8	20.0
		May	237.88	188.28	191.33	197.87	-1.5	0.6	0.2	-0.1	8.0	14.5	21.2	18.6
		June	225.91	187.73	192.26	196.99	-5.0	-0.3	0.5	-0.4	11.3	12.9	19.6	18.0
		July	212.51	197.07	191.85	195.27	-5.9	5.0	-0.2	-0.9	7.5	16.7	15.4	14.3
		Aug	217.48	194.44	192.31	196.25	2.3	-1.3	0.2	0.5	12.8	14.7	11.4	11.9
		Sep	222.59	193.90	193.35	197.82	2.4	-0.3	0.5	0.8	6.3	12.6	4.9	5.5
		Oct	223.88	194.91	193.84	198.33	0.6	0.5	0.3	0.3	4.4	12.8	4.0	4.4
		Nov	227.28	196.50	194.58	199.44	1.5	0.8	0.4	0.6	7.5	13.8	3.9	4.9
		Dec	217.07	188.51	197.26	199.76	-4.5	-4.1	1.4	0.2	7.3	9.0	4.6	5.3
	2013	Jan	202.11	189.21	199.04	199.25	-6.9	0.4	0.9	-0.3	3.0	-2.1	5.6	4.9
		Feb	197.67	188.82	200.82	200.14	-2.2	-0.2	0.9	0.4	-6.2	-3.3	5.6	3.5
		Mar	205.39	190.43	201.52	201.87	3.9	0.9	0.3	0.9	-8.5	-2.0	6.8	4.0
		Apr	223.46	190.60	201.94	204.66	8.8	0.1	0.2	1.4	-7.5	1.8	5.8	3.4

Source: Uganda Bureau of Statistics.

Table 5: Composite CPI Breakdown by Major Group Annual Percentage Changes

		Food	Beverages and tobacco	Clothing and footwear	Rent, Fuel and utilities	H.hold and personal goods	Transport and communication.	Education	Health, Entert. & Others	All Items Index
Weights		27.1558	4.7246	4.4279	14.8374	4.5009	12.8259	14.6940	16.8335	100.0000
Calender Year										
2010		2.6	5.1	2.9	5.2	6.6	-1.4	6.6	9.7	4.0
2011		32.5	16.1	26.7	15.8	22.9	-3.9	8.0	15.7	18.7
2012		9.5	17.2	18.3	21.8	16.4	14.3	15.6	16.0	14.0
Financial Year										
2009/10		16.1	6.3	5.1	4.5	8.2	1.6	7.7	11.9	14.1
2010/11		8.9	7.9	9.5	7.2	11.8	-8.7	5.9	11.0	9.4
2011/12		29.0	23.5	35.8	26.9	25.9	11.8	12.5	19.1	6.5
Monthly										
2010	Jan	18.6	3.2	5.7	0.4	8.3	-1.2	6.1	12.3	8.9
	Feb	14.1	5.0	3.0	2.8	7.7	-0.4	8.3	12.1	8.1
	Mar	11.5	4.4	2.7	4.8	6.9	0.6	8.3	10.8	7.6
	Apr	6.9	4.5	1.5	5.2	6.8	3.5	8.1	8.9	6.0
	May	2.3	3.3	0.0	5.4	5.5	3.7	7.6	8.4	4.3
	June	1.9	4.2	1.7	6.5	4.9	3.0	5.6	9.2	4.2
	July	-0.4	2.1	2.0	6.0	4.8	2.6	5.7	8.8	3.3
	Aug	-5.4	3.0	2.0	6.2	6.0	2.8	5.6	8.5	1.7
	Sep	-9.5	4.5	2.3	5.7	5.8	3.8	5.8	8.0	0.3
	Oct	-5.6	8.9	2.4	5.9	6.8	-12.3	5.8	8.4	0.2
	Nov	-1.7	9.1	4.8	5.7	7.2	-13.2	5.8	8.8	1.4
	Dec	-1.1	9.1	6.7	7.4	8.9	-10.1	6.1	12.4	3.1
2011	Jan	3.6	8.9	8.7	8.7	11.5	-11.2	6.4	11.7	5.0
	Feb	8.8	8.3	11.3	5.7	12.8	-9.7	5.0	11.8	6.4
	Mar	23.7	9.3	13.7	7.1	15.7	-15.5	5.1	12.8	11.2
	Apr	30.8	10.3	16.5	9.5	17.7	-14.6	5.3	13.1	14.1
	May	35.3	10.8	21.5	9.9	21.0	-14.7	5.7	14.3	16.0
	June	33.4	10.6	22.7	8.9	22.8	-12.4	8.2	13.0	15.7
	July	40.7	12.1	26.0	8.5	24.9	-11.9	8.9	15.3	18.8
	Aug	42.9	25.2	31.6	11.9	25.9	-11.2	9.3	17.3	21.4
	Sep	50.4	26.1	37.0	26.1	29.6	-1.2	10.7	20.0	28.3
	Oct	45.8	23.3	45.0	31.8	30.5	16.9	10.7	20.2	30.5
	Nov	40.4	23.8	43.0	30.3	31.8	19.6	10.7	20.2	29.0
	Dec	34.6	24.6	43.7	30.9	31.0	19.2	10.6	18.7	27.0
2012	Jan	27.2	24.1	43.8	34.5	28.0	20.9	10.9	20.9	25.6
	Feb	27.6	25.0	42.7	35.0	27.3	16.7	14.8	20.6	25.7
	Mar	15.4	23.6	39.0	31.8	24.5	24.1	14.9	19.2	21.1
	Apr	15.0	23.2	34.9	29.1	22.3	20.8	14.7	19.4	20.0
	May	13.7	25.1	27.0	27.0	19.4	20.4	14.4	19.0	18.6
	June	12.8	25.5	19.0	25.7	18.2	17.4	18.1	18.0	18.0
	July	5.4	23.6	12.5	26.9	15.9	17.4	16.9	15.9	14.3
	Aug	4.2	9.9	6.4	23.3	13.1	15.9	16.5	13.8	11.9
	Sep	-2.8	6.1	2.3	10.3	9.7	4.0	16.5	12.3	5.5
	Oct	-2.5	6.2	-2.7	6.0	7.6	3.6	16.5	11.2	4.4
	Nov	-2.0	5.2	-1.2	6.4	6.2	4.8	16.5	11.5	4.9
	Dec	0.0	8.5	-4.0	6.0	4.4	5.5	16.2	10.3	5.3
2013	Jan	0.0	12.0	-4.4	3.9	5.4	2.5	15.8	9.9	4.9
	Feb	-2.0	12.6	-4.8	3.9	4.4	4.0	8.1	9.8	3.5
	Mar	-0.9	14.0	-2.9	3.8	4.5	4.7	8.2	10.1	4.0
	Apr	-2.6	13.7	-1.0	4.8	4.9	4.2	8.2	9.0	3.4

Source: Uganda Bureau of Statistics.

Table 6: Composite CPI for Food and Non Food, (Base 2005/2006=100)

	Food	Non Food	All items index	Monthly percentage changes			Annual percentage changes		
				Food	Non Food	All items index	Food	Non Food	All items index
Weights	27.1558	72.8442	100.0000						
Calendar year									
2010	165.44	137.77	145.18				2.6	5.4	4.0
2011	218.92	154.63	172.29				32.5	12.2	18.7
2012	237.62	180.46	196.43				8.5	16.7	14.0
Financial year									
2009/2010	168.9	134.5	144.0				16.5	6.7	9.4
2010/2011	183.9	142.1	153.4				9.3	5.7	6.5
2011/2012	237.3	171.0	189.5				30.6	20.3	23.5
Monthly									
2010									
Jan	173.33	133.06	144.00	-1.3	-0.1	-0.6	18.6	4.8	8.9
Feb	168.15	135.89	144.58	-3.0	2.1	0.4	14.1	5.9	8.1
Mar	165.48	136.35	144.16	-1.6	0.3	-0.3	11.5	6.3	7.6
Apr	165.63	136.95	144.62	0.1	0.4	0.3	6.9	6.2	6.0
May	161.78	137.16	143.80	-2.3	0.2	-0.6	2.3	5.8	4.3
June	159.94	138.41	144.25	-1.1	0.9	0.3	1.9	5.9	4.2
July	156.33	139.15	143.79	-2.3	0.5	-0.3	-0.4	5.6	3.3
Aug	157.64	139.77	144.52	0.8	0.4	0.5	-5.4	5.8	1.7
Sep	162.35	140.18	146.07	3.0	0.3	1.1	-9.5	5.7	0.4
Oct	167.49	137.58	145.53	3.2	-1.9	-0.4	-5.6	3.6	0.2
Nov	173.44	138.05	147.37	3.6	0.3	1.3	-1.7	3.5	1.4
Dec	173.69	140.65	149.41	0.1	1.9	1.4	-1.1	5.5	3.1
2011									
Jan	179.53	141.01	151.20	3.4	0.3	1.2	3.6	6.0	5.0
Feb	182.99	143.23	153.82	1.9	1.6	1.7	8.8	5.4	6.4
Mar	204.72	143.68	160.25	11.9	0.3	4.2	23.7	5.4	11.2
Apr	216.57	145.84	164.96	5.8	1.5	2.9	30.8	6.5	14.1
May	218.86	147.27	166.81	1.1	1.0	1.1	35.3	7.4	16.0
June	213.37	149.32	166.94	-2.5	1.4	0.1	33.4	7.9	15.7
July	219.89	151.85	170.81	3.1	1.7	2.3	40.7	9.1	18.8
Aug	225.32	156.17	175.40	2.5	2.8	2.7	42.9	11.7	21.4
Sep	244.19	165.63	187.46	8.4	6.1	6.9	50.4	18.2	28.3
Oct	244.24	169.04	189.88	0.0	2.1	1.3	45.8	22.9	30.5
Nov	243.47	169.71	190.12	-0.3	0.4	0.1	40.4	22.9	29.0
Dec	233.86	172.83	189.77	-3.9	1.8	-0.2	34.6	22.9	27.0
2012									
Jan	228.40	175.08	189.94	-2.3	1.3	0.1	27.2	24.2	25.6
Feb	233.54	178.06	193.40	2.3	1.7	1.8	27.6	24.3	25.7
Mar	236.22	177.79	194.14	1.1	-0.2	0.4	15.4	23.7	21.1
Apr	249.14	178.29	198.00	5.5	0.3	2.0	15.0	22.3	20.0
May	248.90	178.25	197.87	-0.1	0.0	-0.1	13.7	21.0	18.6
June	240.73	179.74	196.99	-3.3	0.8	-0.4	12.8	20.4	18.0
July	231.77	180.76	195.27	-3.7	0.6	-0.9	5.4	19.0	14.3
Aug	234.81	181.10	196.25	1.3	0.2	0.5	4.2	16.0	11.9
Sep	237.23	182.37	197.82	1.0	0.7	0.8	-2.8	10.1	5.5
Oct	238.12	183.07	198.33	0.4	0.4	0.3	-2.5	8.3	4.4
Nov	238.64	184.37	199.44	0.2	0.7	0.6	-2.0	8.6	4.9
Dec	233.97	186.65	199.76	-2.0	1.2	0.2	0.0	8.0	5.3
2013									
Jan	228.39	187.77	199.25	-2.4	0.6	-0.3	0.0	7.2	4.9
Feb	228.84	188.81	200.14	0.2	0.6	0.4	-2.0	6.0	3.5
Mar	233.99	189.31	201.87	2.3	0.3	0.9	-0.9	6.5	4.0
Apr	242.74	190.02	204.66	3.7	0.4	1.4	-2.6	6.6	3.4

Source: Uganda Bureau of Statistics.

Table 7: Composite CPI Breakdown For Food Crops, Other Goods and Services,(Base 2005/6=100)

					Monthly percentage changes				Annual percentage changes				
		Food Crops	Other Goods	Services	All items index	Food Crops	Other Goods	Services	All item index	Food Crops	Other Goods	Services	All items index
Weights		13.4511	40.7911	45.7578	100.0000								
Calender year													
2010		156.41	152.60	135.20	145.18					1.5	4.4	5.2	4.0
2011		201.91	193.83	143.57	172.29					29.1	27.0	6.2	18.7
2012		221.46	220.78	166.45	196.43					9.7	13.9	15.9	14.0
Financial year													
2009/2010		163.8	149.4	132.7	144.0					24.4	7.4	7.0	9.4
2010/2011		176.9	163.7	136.9	153.4					8.0	9.5	3.2	6.5
2011/2012		213.7	218.3	155.8	189.5					20.8	33.4	13.8	23.5
Monthly													
2010	Jan	170.46	148.89	131.41	144.00	-3.2	0.5	-0.4	-0.6	30.0	5.1	6.2	8.9
	Feb	162.44	150.64	133.88	144.58	-4.7	1.2	1.9	0.4	21.5	5.3	7.2	8.1
	Mar	157.90	150.65	134.18	144.16	-2.8	0.0	0.2	-0.3	17.2	5.5	6.9	7.6
	Apr	158.86	150.44	135.40	144.62	0.6	-0.1	0.9	0.3	10.0	4.7	6.8	6.0
	May	152.65	149.82	135.87	143.80	-3.9	-0.4	0.3	-0.6	3.9	3.0	6.7	4.3
	Jun	146.10	152.10	136.71	144.25	-4.3	1.5	0.6	0.3	3.5	3.3	6.3	4.2
	July	139.00	152.85	137.14	143.79	-4.9	0.5	0.3	-0.3	-2.5	3.7	5.7	3.3
	Aug	144.18	152.63	137.38	144.52	3.7	-0.1	0.2	0.5	-9.2	2.8	5.7	1.7
	Sep	150.88	153.41	138.04	146.07	4.6	0.5	0.5	1.1	-17.6	3.1	5.7	0.4
	Oct	158.51	155.50	132.94	145.53	5.1	1.4	-3.7	-0.4	-11.4	4.6	1.3	0.2
	Nov	167.97	156.69	133.10	147.37	6.0	0.8	0.1	1.3	-5.5	5.1	1.3	1.4
	Dec	167.93	157.61	136.39	149.41	0.0	0.6	2.5	1.4	-4.6	6.3	3.3	3.1
2011	Jan	172.94	161.60	135.42	151.20	3.0	2.5	-0.7	1.2	1.5	8.5	3.1	5.0
	Feb	173.61	164.92	137.69	153.82	0.4	2.0	1.7	1.7	6.9	9.5	2.8	6.4
	Mar	203.88	171.64	136.47	160.25	17.4	4.1	-0.9	4.2	29.1	13.9	1.7	11.2
	Apr	221.26	175.48	138.24	164.96	8.5	2.2	1.3	2.9	39.3	16.6	2.1	14.1
	May	220.19	179.07	139.26	166.81	-0.5	2.0	0.7	1.1	44.2	19.5	2.5	16.0
	Jun	203.04	182.91	141.09	166.94	-7.8	2.1	1.3	0.1	39.0	20.3	3.2	15.7
	July	197.74	192.52	142.28	170.81	-2.6	5.2	0.8	2.3	42.3	26.0	3.7	18.8
	Aug	192.74	203.47	144.01	175.40	-2.5	5.7	1.2	2.7	33.7	33.3	4.8	21.4
	Sep	209.43	221.74	149.71	187.46	8.7	9.0	4.0	6.9	38.8	44.5	8.5	28.3
	Oct	214.48	223.93	151.54	189.88	2.4	1.0	1.2	1.3	35.3	44.0	14.0	30.5
	Nov	211.47	224.92	152.12	190.12	-1.4	0.4	0.4	0.1	25.9	43.5	14.3	29.0
	Dec	202.21	223.82	155.02	189.77	-4.4	-0.5	1.9	-0.2	20.4	42.0	13.7	27.0
2012	Jan	196.23	223.06	157.96	189.94	-3.0	-0.3	1.9	0.1	13.5	38.0	16.6	25.6
	Feb	210.70	222.50	162.20	193.40	7.4	-0.2	2.7	1.8	21.4	34.9	17.8	25.7
	Mar	224.46	219.38	162.26	194.14	6.5	-1.4	0.0	0.4	10.1	27.8	18.9	21.1
	Apr	241.47	222.17	162.96	198.00	7.6	1.3	0.4	2.0	9.1	26.6	17.9	20.0
	May	237.88	221.97	163.62	197.87	-1.5	-0.1	0.4	-0.1	8.0	24.0	17.5	18.6
	Jun	225.91	220.49	166.07	196.99	-5.0	-0.7	1.5	-0.4	11.3	20.5	17.7	18.0
	July	212.51	218.76	167.90	195.27	-5.9	-0.8	1.1	-0.9	7.5	13.6	18.0	14.3
	Aug	217.48	219.27	168.12	196.25	2.3	0.2	0.1	0.5	12.8	7.8	16.7	11.9
	Sep	222.59	219.44	169.93	197.82	2.4	0.1	1.1	0.8	6.3	-1.0	13.5	5.5
	Oct	223.88	220.17	170.45	198.33	0.6	0.3	0.3	0.3	4.4	-1.7	12.5	4.4
	Nov	227.28	219.98	171.99	199.44	1.5	-0.1	0.9	0.6	7.5	-2.2	13.1	4.9
	Dec	217.07	222.11	173.98	199.76	-4.5	1.0	1.2	0.2	7.3	-0.8	12.2	5.3
2013	Jan	202.11	225.75	173.96	199.25	-6.9	1.6	0.0	-0.3	3.0	1.2	10.1	4.9
	Feb	197.67	229.22	174.12	200.14	-2.2	1.5	0.1	0.4	-6.2	3.0	7.3	3.5
	Mar	205.39	230.32	174.62	201.87	3.9	0.5	0.3	0.9	-8.5	5.0	7.6	4.0
	Apr	223.46	229.95	175.85	204.66	8.8	-0.2	0.7	1.4	-7.5	3.5	7.9	3.4

Source: Uganda Bureau of Statistics.

Table 8: Consumer Price Index - Kampala High Income (Base: 2005/2006 =100)

	Food	Beverages and tobacco	Clothing and footwear	Rent, Fuel and utilities	H.hold and personal goods	Transport and communication.	Educa-tion	Health, entert. & Others	All items index	Mon-thly % change	Annua-l % change	
Weights	20.0031	2.7960	5.0827	15.7135	4.0389	14.1332	18.7364	19.4960	100.0000			
Calendar year												
2010	164.86	133.41	122.81	149.49	137.64	123.57	119.82	141.99	139.60		5.0	
2011	211.79	154.95	150.91	175.33	163.67	117.91	130.89	172.28	163.30		17.0	
2012	231.30	177.57	190.86	220.50	190.77	133.33	151.69	201.11	189.76		16.2	
Financial year												
2009/2010	163.82	130.34	121.16	147.23	131.38	125.92	117.31	136.04	137.31		8.0	
2010/2011	182.11	140.81	129.10	153.84	148.55	115.59	123.42	154.46	146.67		6.8	
2011/2012	229.07	170.36	180.60	206.77	180.41	127.23	139.62	190.35	180.79		23.3	
Monthly												
2010	Jan	168.11	129.70	123.64	142.53	129.80	125.66	115.07	136.97	(0.3)	7.1	
	Feb	167.96	130.07	120.83	148.77	129.60	124.39	120.88	138.89	1.4	8.0	
	Mar	164.28	129.85	120.03	148.66	131.05	125.10	120.70	137.10	138.27	(0.4)	7.5
	Apr	165.02	130.90	120.63	147.67	133.65	127.79	120.26	137.08	138.72	0.3	6.7
	May	161.72	131.85	120.30	148.61	135.91	129.34	120.54	137.93	138.75	0.0	5.7
	June	158.83	131.52	122.27	148.96	137.52	128.65	119.16	140.63	138.55	(0.1)	5.3
	July	156.14	131.16	122.78	150.74	138.77	128.48	119.90	141.60	138.66	0.1	4.7
	Aug	157.42	130.97	122.96	153.14	140.44	128.67	119.78	142.48	139.54	0.6	4.0
	Sep	162.23	132.30	122.69	150.87	140.60	130.09	120.22	142.76	140.51	0.7	1.4
	Oct	166.27	140.27	123.36	151.74	142.91	109.17	120.27	142.95	138.90	(1.1)	1.2
	Nov	174.24	140.20	125.20	151.55	143.73	107.84	120.30	146.90	141.18	1.6	2.5
	Dec	176.12	142.07	129.09	150.67	147.68	117.66	120.72	161.79	146.19	3.6	6.4
2011	Jan	180.82	143.20	129.27	152.31	149.43	111.51	121.14	159.78	146.32	0.1	6.8
	Feb	184.64	145.68	130.52	153.55	151.83	113.97	127.01	160.06	149.01	1.8	7.3
	Mar	198.12	146.28	130.83	154.97	152.86	106.17	127.01	161.08	151.10	1.4	9.3
	Apr	212.33	145.43	134.37	158.15	155.45	110.66	126.87	161.99	155.49	2.9	12.1
	May	212.09	145.59	138.52	158.52	158.58	110.06	126.98	164.88	156.34	0.5	12.7
	June	204.88	146.52	139.67	159.89	160.29	112.81	130.87	167.21	156.84	0.3	13.2
	July	208.81	146.73	148.73	160.74	163.87	113.00	132.29	174.20	160.03	2.0	15.4
	Aug	215.57	163.36	158.01	169.51	167.62	112.50	132.67	176.67	164.33	2.7	17.8
	Sep	231.77	165.92	160.48	208.22	172.56	128.93	136.51	182.25	178.18	8.4	26.8
	Oct	234.63	169.04	172.93	209.85	174.51	129.33	136.21	182.87	179.93	1.0	29.5
	Nov	233.11	171.30	177.79	208.96	176.94	128.45	136.51	182.99	179.84	(0.0)	27.4
	Dec	224.75	170.29	189.85	209.25	180.07	137.47	136.65	193.37	182.25	1.3	24.7
2012	Jan	225.57	175.65	191.01	221.13	183.69	131.76	136.67	197.45	184.63	1.3	26.2
	Feb	233.30	175.35	196.08	224.24	184.88	127.63	142.71	198.02	187.62	1.6	25.9
	Mar	228.85	172.91	195.95	221.74	186.66	127.35	142.90	198.06	186.34	-0.7	23.3
	Apr	240.39	173.51	197.10	219.35	190.30	128.78	142.63	198.20	188.67	1.3	21.3
	May	241.30	180.24	196.97	214.74	190.51	130.79	142.90	200.70	189.15	0.3	21.0
	June	230.82	180.02	182.34	213.57	193.33	130.77	156.81	199.41	188.58	-0.3	20.2
	July	223.09	179.71	181.61	219.53	190.94	131.11	155.65	200.11	187.79	-0.4	17.4
	Aug	226.13	177.49	184.56	219.90	190.93	132.38	155.77	200.72	188.87	0.6	14.9
	Sep	229.99	176.14	185.56	222.84	192.67	133.14	160.76	203.77	191.82	1.6	7.7
	Oct	233.48	179.15	187.39	223.50	193.14	133.71	161.06	203.50	192.91	0.6	7.2
	Nov	231.92	176.63	194.89	223.84	195.40	140.12	161.22	204.51	194.18	0.7	8.0
	Dec	230.74	183.98	196.84	221.60	196.76	152.21	161.22	208.93	196.53	1.2	7.8
2013	Jan	225.03	188.30	197.38	231.91	197.85	141.60	160.48	212.92	196.33	-0.1	6.3
	Feb	223.65	191.29	197.99	232.78	198.88	141.15	158.45	215.10	196.33	0.0	4.6
	Mar	230.24	196.57	198.23	232.52	199.98	142.06	158.62	215.10	197.97	0.8	6.2
	Apr	240.13	196.20	202.45	231.06	204.32	142.03	158.64	215.93	200.26	1.2	6.1

Source: Uganda Bureau of Statistics.

Table 9 : Consumer Price Index Kampala Middle & Low Income (Base: 2005/2006 =100)

	Food	Beverages and tobacco	Clothing and footwear	Rent, Fuel and utilities	H.hold and personal goods	Transport and communication.	Education	Health, entert.& Others	All items index	Monthly % change	Annual % change	
Weights	28.0629	5.4108	3.8659	17.3887	5.1247	12.4591	11.0069	16.6810	100.0000			
Calendar year												
2010	164.28	129.66	133.17	142.77	153.02	123.78	122.36	141.18	143.37		4.2	
2011	217.86	150.47	193.70	162.01	192.06	113.14	134.30	152.05	169.03		17.9	
2012	229.67	176.78	217.79	188.07	223.47	129.59	154.67	175.03	188.96		11.8	
Financial year												
2009/2010	167.09	125.62	130.41	139.48	147.72	126.75	119.68	134.86	142.02		9.3	
2010/2011	183.08	135.02	150.98	146.66	166.15	113.22	126.48	146.05	150.93		6.3	
2011/2012	234.52	169.30	227.12	181.95	214.64	124.67	143.12	162.48	184.78		22.4	
Monthly												
2010	Jan	170.55	125.38	133.69	137.89	148.87	122.48	117.60	133.25	141.85	-0.9	8.5
	Feb	166.62	126.19	128.75	143.86	149.34	125.77	123.65	136.10	143.21	1.0	8.1
	Mar	164.46	128.61	128.01	142.58	150.49	127.37	123.22	136.34	142.74	-0.3	8.3
	Apr	164.19	127.68	127.19	140.59	150.66	128.89	123.18	139.24	142.91	0.1	6.5
	May	159.60	127.19	126.29	139.36	150.22	129.51	122.76	140.87	141.63	-0.9	4.0
	June	159.76	128.15	127.74	142.98	150.67	129.50	121.54	143.84	142.79	0.8	5.0
	July	158.22	128.34	130.54	145.12	149.87	129.56	121.78	143.85	142.85	0.0	4.2
	Aug	159.07	127.74	132.09	144.59	156.05	130.19	122.15	143.85	143.46	0.4	2.6
	Sep	160.96	129.32	133.75	143.50	155.90	130.43	122.61	144.13	144.07	0.4	0.7
	Oct	166.37	135.11	133.03	144.70	157.18	108.89	122.91	144.27	143.52	-0.4	0.2
	Nov	171.71	136.54	144.87	143.42	156.65	108.37	123.30	144.24	145.27	1.2	1.8
	Dec	169.89	135.65	152.05	144.65	160.38	114.42	123.60	144.23	146.18	0.6	2.1
2011	Jan	179.00	135.73	152.15	147.69	165.03	107.66	123.80	144.86	148.80	1.8	4.9
	Feb	180.09	133.11	154.74	147.79	167.72	110.40	130.64	144.92	150.32	1.0	5.0
	Mar	206.67	138.03	157.43	149.04	173.01	101.59	130.31	146.87	157.83	5.0	10.6
	Apr	215.58	140.40	162.81	150.94	177.76	104.42	130.98	149.79	162.16	2.7	13.5
	May	216.98	140.11	175.45	149.29	185.22	104.18	131.54	150.30	163.24	0.7	15.3
	June	212.47	140.17	182.81	149.25	189.02	108.57	134.14	151.30	163.45	0.1	14.5
	July	217.47	139.44	189.58	154.39	192.40	108.70	135.34	151.68	166.35	1.8	16.5
	Aug	222.62	160.80	203.76	160.27	199.47	108.92	136.21	153.78	171.35	3.0	19.4
	Sep	243.83	165.23	221.88	175.41	207.47	123.46	139.41	156.42	183.90	7.3	27.6
	Oct	242.24	170.33	237.85	191.10	213.18	123.90	139.65	157.60	187.64	2.0	30.7
	Nov	243.00	170.57	239.93	181.90	214.58	124.00	139.31	158.03	186.47	-0.6	28.4
	Dec	234.42	171.72	246.03	187.06	219.90	131.92	140.30	159.05	186.79	0.2	27.8
2012	Jan	225.21	171.43	244.07	192.58	217.32	130.30	140.61	163.01	185.44	-0.7	24.6
	Feb	227.34	174.00	239.93	193.69	223.49	129.75	147.21	163.01	187.18	0.9	24.5
	Mar	234.80	178.03	236.70	191.27	220.54	130.06	146.53	163.01	188.76	0.8	19.6
	Apr	247.34	175.96	235.46	190.47	219.42	130.52	146.22	170.28	193.16	2.3	19.1
	May	242.19	176.28	220.58	182.32	222.51	126.93	147.22	176.63	190.62	-1.3	16.8
	June	233.80	177.83	209.63	182.98	225.36	127.58	159.47	177.30	189.73	-0.5	16.1
	July	222.49	175.31	201.98	182.87	226.84	127.54	158.86	177.29	186.10	-1.9	11.9
	Aug	225.19	176.17	199.99	187.86	227.31	127.46	159.08	177.28	187.73	0.9	9.6
	Sep	223.53	174.73	201.79	187.47	227.64	127.67	163.36	180.52	188.25	0.3	2.4
	Oct	224.47	177.91	201.09	187.92	225.07	127.84	162.60	180.62	188.56	0.2	0.5
	Nov	227.18	178.75	211.19	189.30	224.42	129.92	162.44	185.52	191.02	1.3	2.4
	Dec	222.55	184.92	211.12	188.15	222.56	139.49	162.40	185.79	190.99	0.0	2.2
2013	Jan	219.45	194.32	210.39	194.06	224.88	129.64	163.36	189.13	191.18	0.1	3.1
	Feb	220.78	195.67	206.72	193.60	225.87	128.51	162.66	189.58	191.31	0.1	2.2
	Mar	224.24	197.87	210.62	192.86	226.46	131.79	162.88	190.39	193.02	0.9	2.3
	Apr	232.83	199.70	212.92	196.20	228.45	132.29	162.70	190.80	196.42	1.8	1.7

Source: Uganda Bureau of Statistics.

Table 10: Consumer Price Index JINJA (Base: 2005/2006 =100)

		Food	Beverages and tobacco	Clothing and footwear	Rent, Fuel and utilities	H.hold and personal goods	Transport and communication.	Educational	Health, entert. & Others	All items index	Monthly % change	Annual % change
Weights		33.027	3.3065	3.9611	10.5877	4.9449	13.7220	15.0840	15.3664	100.00		
Calendar year												
	2010	169.40	128.96	133.38	162.82	166.28	115.96	160.31	142.96	153.02		3.7
	2011	236.28	155.39	158.09	192.92	206.89	102.62	166.95	173.57	186.03		21.6
	2012	254.71	181.34	180.68	228.56	242.33	118.20	190.27	188.40	207.33		11.4
Financial year												
	2009/2010	176.98	124.10	132.50	156.12	159.53	119.44	152.50	134.18	152.23		9.8
	2010/2011	193.53	137.65	142.63	172.23	180.86	103.31	163.49	157.53	164.34		8.0
	2011/2012	254.30	173.59	172.85	217.57	230.18	113.30	177.50	182.99	201.43		22.6
Monthly												
	2010											
	Jan	181.97	126.38	133.92	153.47	160.11	118.68	148.94	131.49	152.71	-0.4	9.2
	Feb	175.97	125.24	129.74	159.37	163.69	118.89	157.96	132.87	152.92	0.1	8.9
	Mar	170.70	123.94	128.90	160.87	164.40	119.54	157.91	137.98	152.17	-0.5	7.7
	Apr	170.78	123.80	128.72	157.74	165.14	121.19	157.94	140.71	152.54	0.2	5.5
	May	170.84	122.60	128.33	156.29	165.25	121.68	158.04	140.78	152.45	-0.1	4.4
	June	168.07	124.18	132.38	162.06	164.96	123.71	163.72	143.60	153.91	1.0	3.7
	July	156.65	125.24	133.57	166.40	162.62	122.72	163.74	143.60	150.43	-2.3	3.0
	Aug	158.40	126.74	135.02	165.78	164.07	122.89	163.74	141.86	150.88	0.3	1.1
	Sept	160.86	134.85	135.71	166.07	167.47	123.41	163.01	145.50	152.71	1.2	-1.5
	Oct	165.56	136.34	135.14	169.08	169.29	99.02	162.78	153.00	152.47	-0.2	-0.2
	Nov	174.64	139.11	137.88	169.42	172.87	99.58	162.65	151.91	155.77	2.2	1.4
	Dec	178.34	139.15	141.29	167.28	175.51	100.20	163.27	152.18	157.25	1.0	2.6
	2011											
	Jan	185.33	136.08	144.65	170.66	181.98	100.08	163.49	153.46	160.48	2.1	5.1
	Feb	185.08	133.70	141.42	174.08	182.77	101.04	163.00	162.38	162.02	1.0	5.9
	Mar	228.85	137.67	146.38	178.35	188.65	89.70	162.68	168.09	176.82	9.1	16.2
	Apr	236.69	145.42	149.65	177.92	196.67	92.46	161.59	171.08	180.82	2.3	18.5
	May	243.83	149.15	153.49	180.02	203.64	92.54	162.57	175.16	184.81	2.2	21.2
	June	248.08	148.32	157.32	181.74	204.77	96.06	169.41	172.13	187.62	1.5	21.9
	July	250.32	145.06	155.92	185.72	205.74	96.58	169.37	173.64	188.97	0.7	25.6
	Aug	243.16	162.64	159.00	196.03	213.35	98.64	170.21	175.88	189.53	0.3	25.6
	Sept	262.27	174.29	164.79	210.50	216.16	113.90	169.82	178.71	200.59	5.8	31.4
	Oct	249.31	181.77	170.77	219.19	219.90	114.59	169.95	183.17	198.70	-0.9	30.3
	Nov	252.21	177.16	174.55	221.67	230.37	115.10	171.20	184.39	200.88	1.1	29.0
	Dec	250.18	173.44	179.15	219.13	238.69	120.76	170.16	184.80	201.10	0.1	27.9
	2012											
	Jan	243.44	172.64	183.85	231.99	233.68	117.93	170.60	184.54	199.78	-0.7	24.5
	Feb	253.83	172.91	181.03	231.50	236.56	114.57	183.67	183.69	204.58	2.4	26.3
	Mar	258.86	177.64	177.37	225.82	242.64	116.73	185.46	183.69	206.52	0.9	16.8
	Apr	260.45	177.71	175.16	222.42	239.40	116.93	185.25	183.93	206.47	0.0	14.2
	May	259.45	183.14	174.71	221.80	241.68	117.04	184.56	189.58	207.13	0.3	12.1
	June	268.16	184.63	177.94	225.09	243.96	116.76	199.77	189.88	212.95	2.8	13.5
	July	260.82	182.21	175.85	232.44	245.47	117.67	199.55	190.17	211.35	-0.8	11.8
	Aug	248.00	180.77	174.24	224.23	247.03	117.92	200.74	187.25	205.98	-2.5	8.7
	Sept	252.64	179.95	179.64	225.97	245.41	118.93	192.44	189.89	207.09	0.5	3.2
	Oct	253.26	192.39	181.06	237.43	243.46	119.43	194.20	191.36	209.44	1.1	5.4
	Nov	247.80	187.26	190.73	233.06	243.19	119.12	193.49	191.37	207.23	-1.1	3.2
	Dec	249.78	184.89	196.58	230.99	245.52	125.31	193.49	195.22	209.37	1.0	4.1
	2013											
	Jan	241.06	200.75	195.21	225.37	250.16	120.59	193.39	203.03	207.13	-1.1	3.7
	Feb	255.64	213.71	194.01	247.01	249.06	120.77	197.18	198.61	214.49	3.5	4.8
	Mar	260.64	214.07	195.60	237.41	249.93	122.38	196.89	199.27	215.52	0.5	4.4
	Apr	259.03	213.96	194.57	241.65	252.76	120.64	196.89	201.86	215.69	0.1	4.5

Source: Uganda Bureau of Statistics.

Table 11: Consumer Price Index Mbale (Base: 2005/2006 =100)

		Food	Beverages and tobacco	Clothing and footwear	Rent, Fuel and utilities	H.hold and personal goods	Transport and communication.	Education	Health, entert.& Others	All items index	Monthly % change	Annual % change
Weights		30.3355	4.5287	3.7102	15.4362	4.7934	13.0972	13.1049	14.9938	100.0000		
Calendar year												
2010		172.72	126.52	129.45	154.33	145.00	118.40	147.13	137.31	149.08		3.5
2011		230.47	151.89	146.60	173.66	176.31	113.42	155.37	159.31	176.59		18.5
2012		258.11	176.31	157.70	208.33	207.37	128.34	178.72	196.05	203.86		15.4
Financial year												
2009/2010		176.20	121.44	122.77	149.11	141.97	120.97	143.44	135.05	148.22		9.8
2010/2011		191.01	134.58	136.48	160.04	155.39	110.83	151.77	144.10	157.27		6.1
2011/2012		255.19	169.76	158.59	197.38	196.25	123.82	167.40	180.18	196.03		24.6
Monthly												
2010	Jan	175.88	121.94	126.15	142.58	141.66	120.44	140.54	135.82	146.91	-1.6	7.6
	Feb	174.29	123.32	125.10	148.41	141.28	120.87	143.42	135.93	147.78	0.6	7.4
	Mar	172.99	122.82	123.99	155.83	142.62	121.22	144.84	135.07	148.64	0.6	7.3
	Apr	178.44	123.43	125.10	149.82	142.88	123.57	145.37	135.37	149.87	0.8	6.1
	May	175.64	122.54	126.00	149.33	143.76	123.25	145.39	135.44	148.95	-0.6	3.7
	June	174.56	123.39	129.89	156.23	144.32	123.29	146.54	136.28	150.18	0.8	3.6
	July	162.97	124.69	129.68	156.54	142.61	123.37	146.72	135.60	146.61	-2.4	1.5
		165.96	124.81	130.41	159.90	143.76	124.24	147.28	136.16	148.40	1.2	1.5
	Sept	168.56	126.96	132.59	155.52	146.30	123.35	152.50	137.85	149.63	0.8	1.2
	Oct	171.59	135.12	132.72	157.74	148.11	106.17	151.24	139.69	149.22	-0.3	0.8
	Nov	174.32	135.22	132.86	159.88	149.98	105.60	150.50	139.92	150.33	0.7	-0.1
	Dec	177.44	134.01	138.90	160.17	152.68	105.48	151.27	144.61	152.41	1.4	2.1
2011	Jan	178.07	136.72	138.30	162.24	153.75	107.33	151.57	143.83	153.24	0.5	4.3
	Feb	187.78	138.34	137.41	159.53	156.88	109.24	152.98	147.40	156.93	2.4	6.2
	Mar	215.78	138.38	140.62	161.63	165.41	101.45	153.23	148.63	165.47	5.4	11.3
	Apr	222.29	140.53	140.85	162.70	164.29	107.13	154.37	148.72	168.57	1.9	12.5
	May	234.09	140.62	142.14	163.47	168.33	108.37	154.10	154.74	173.55	2.9	16.5
	June	233.32	139.60	141.25	161.17	172.62	108.25	155.45	152.03	172.84	-0.4	15.1
	July	236.72	139.03	142.23	165.21	178.26	111.28	155.55	158.33	176.13	1.9	20.1
	Aug	238.51	158.87	146.31	166.78	180.97	112.08	156.94	159.30	178.53	1.4	20.3
	Sept	260.29	169.24	149.94	190.62	188.26	122.73	157.94	171.02	193.05	8.1	29.0
	Oct	254.72	173.22	154.43	193.09	192.82	123.42	157.46	172.59	192.57	-0.2	29.1
	Nov	252.30	174.13	159.67	198.13	195.99	123.99	157.47	175.20	193.47	0.5	28.7
	Dec	251.74	174.03	166.00	199.35	198.09	125.75	157.43	179.94	194.76	0.7	27.8
2012	Jan	253.87	174.07	168.95	212.97	197.33	128.03	159.26	183.67	198.68	2.0	29.6
	Feb	256.19	173.75	168.39	219.90	199.27	127.71	182.45	190.62	204.55	3.0	30.3
	Mar	255.23	173.40	164.77	216.87	206.09	128.93	183.23	188.43	203.90	-0.3	23.2
	Apr	264.13	175.21	163.35	201.24	204.87	127.67	181.96	193.37	204.56	0.3	21.4
	May	268.44	176.58	161.87	203.50	205.68	127.75	180.50	195.61	206.42	0.9	18.9
	June	270.15	175.54	157.13	200.91	207.40	126.46	178.56	194.12	205.76	-0.3	19.0
	July	255.14	176.18	152.12	201.25	209.49	126.51	179.95	192.29	201.11	-2.3	14.2
	Aug	251.62	176.08	151.73	209.28	211.25	126.84	180.75	199.40	202.56	0.7	13.5
	Sep	250.32	176.45	149.95	211.32	211.99	129.63	180.38	201.28	203.07	0.2	5.2
	Oct	258.78	177.08	149.46	210.78	212.43	130.11	180.31	202.42	205.81	1.3	6.9
	Nov	258.62	177.90	151.66	206.91	211.05	130.08	178.23	204.97	205.32	-0.2	6.1
	Dec	254.83	183.45	153.00	205.06	211.59	130.39	179.02	206.25	204.55	-0.4	5.0
2013	Jan	252.77	198.29	151.74	206.58	213.95	133.03	177.99	207.62	205.31	0.4	3.3
	Feb	251.35	199.35	151.09	216.68	213.64	132.14	180.40	207.86	206.68	0.7	1.0
	Mar	255.02	201.21	152.99	212.08	215.05	134.41	180.54	206.81	207.47	0.4	1.8
	Apr	262.74	199.91	155.92	208.42	215.79	134.94	179.93	206.49	209.27	0.9	2.3

Source: Uganda Bureau of Statistics.

Table 12: Consumer Price Index Masaka (Base: 2005/2006 =100)

		Food	Beverages and tobacco	Clothing and footwear	Rent, Fuel and utilities	H.hold and personal goods	Transport and communication.	Educatio n	Health, entert. & Others	All items index	Monthl y % change	Annual % change
Weights		28.0398	5.5776	4.5968	10.6448	4.0282	14.4800	15.2928	17.3400	100.0000		
Calender year												
2010		158.25	131.48	118.96	162.57	146.93	125.70	137.56	147.50	145.21		2.8
2011		211.50	150.57	142.28	182.45	181.28	133.99	147.59	178.65	173.92		19.8
2012		225.49	172.51	157.43	234.39	206.28	147.41	181.88	213.95	199.60		14.8
Financial year												
2009/2010		164.45	125.80	120.75	160.78	144.11	126.73	135.42	139.71	144.88		9.4
2010/2011		177.57	137.68	125.04	166.60	158.06	124.84	141.08	157.66	154.31		6.5
2011/2012		223.63	166.09	156.95	215.82	199.56	145.39	164.77	201.47	191.38		24.0
Monthly												
2010	Jan	185.51	127.43	118.22	153.74	147.17	123.50	133.93	141.97	149.83	-0.3	11.9
	Feb	157.96	126.40	119.22	162.70	151.21	124.50	137.27	142.18	143.91	-4.0	6.5
	Mar	158.04	126.48	116.83	163.08	145.97	125.67	137.02	141.99	143.75	-0.1	6.5
	Apr	153.89	126.52	116.92	156.49	143.88	130.39	136.31	142.14	142.41	-0.9	3.1
	May	145.21	126.59	113.31	155.14	142.22	127.98	136.87	145.07	139.85	-1.8	1.6
	June	143.67	128.68	118.06	163.51	140.67	127.99	137.40	146.98	140.99	0.8	3.0
	July	140.96	127.99	117.22	172.54	145.31	128.04	137.35	146.98	141.30	0.2	1.0
	Aug	143.85	127.23	119.14	169.33	146.83	128.04	137.51	147.89	142.06	0.5	-1.2
	Sep	151.89	140.43	120.10	162.59	147.65	128.56	138.32	148.30	144.68	1.8	-0.9
	Oct	163.30	140.15	120.50	155.82	147.99	129.14	139.31	154.62	148.51	2.6	-0.7
	Nov	175.72	140.73	122.91	167.27	149.23	117.87	139.45	155.14	151.88	2.3	2.4
	Dec	179.04	139.14	125.06	168.65	154.99	116.69	139.94	156.71	153.38	1.0	2.1
2011	Jan	185.68	139.60	123.97	163.05	158.84	115.42	140.17	157.92	154.84	1.0	3.3
	Feb	180.19	139.92	124.38	162.72	161.34	119.20	143.12	159.06	154.59	-0.2	7.4
	Mar	191.24	139.89	126.26	160.40	164.46	127.40	143.19	163.29	159.59	3.2	11.0
	Apr	217.20	137.24	129.11	167.63	166.33	128.84	143.36	164.65	168.17	5.4	18.1
	May	203.96	139.82	133.65	172.12	176.48	130.05	143.97	169.60	166.82	-0.8	19.3
	June	197.82	139.98	138.17	177.06	177.31	128.79	147.24	167.73	165.87	-0.6	17.6
	July	204.37	145.94	144.29	187.62	182.31	130.00	150.24	170.37	170.74	2.9	20.8
	Aug	218.95	161.06	150.42	181.86	192.02	131.63	151.84	190.31	179.67	5.2	26.5
	Sep	243.86	163.68	155.01	184.15	195.73	145.00	150.73	197.67	190.44	6.0	31.6
	Oct	239.75	165.70	158.69	212.00	197.77	146.05	151.82	196.60	192.75	1.2	29.8
	Nov	232.30	165.81	160.60	215.88	200.52	152.90	151.96	204.02	193.58	0.4	27.5
	Dec	222.71	168.24	162.83	204.89	202.26	152.62	153.39	202.60	189.96	-1.9	23.9
2012	Jan	207.10	168.34	161.98	217.80	204.43	154.24	153.52	208.51	188.29	-0.9	21.6
	Feb	209.71	169.41	162.10	231.56	200.28	146.88	183.77	209.72	194.16	3.1	25.6
	Mar	214.24	171.35	160.16	232.88	201.94	143.79	183.69	211.81	195.55	0.7	22.5
	Apr	233.54	170.43	155.78	245.50	204.97	144.20	182.10	212.02	202.03	3.3	20.1
	May	233.77	171.27	155.61	242.63	205.08	149.58	182.00	206.48	201.64	-0.2	20.9
	June	223.22	171.85	155.95	233.12	207.44	147.74	182.13	207.50	197.74	-1.9	19.2
	July	212.30	172.67	156.04	238.86	209.30	149.65	183.95	214.06	197.11	-0.3	15.4
	Aug	223.69	172.04	153.65	240.14	207.80	145.84	184.45	216.28	200.14	1.5	11.4
	Sep	236.89	171.93	151.01	231.19	207.50	145.63	185.86	219.12	203.43	1.6	6.8
	Oct	241.91	173.08	156.23	232.72	207.07	146.57	185.16	220.65	205.58	1.1	6.7
	Nov	244.69	178.65	157.38	233.45	209.58	147.33	187.74	220.65	207.41	0.9	7.1
	Dec	226.67	179.10	163.20	230.04	209.80	146.78	188.04	224.15	202.87	-2.2	6.8
2013	Jan	214.25	192.93	162.49	248.20	210.44	147.66	187.83	222.41	201.87	-0.5	7.2
	Feb	210.22	193.43	163.52	240.35	210.57	147.37	187.86	223.45	200.13	-0.9	3.1
	Mar	216.21	199.29	166.41	239.10	211.69	147.83	187.32	226.50	202.70	1.3	3.7
	Apr	239.15	199.39	167.62	238.98	211.98	147.93	187.79	228.22	209.57	3.4	3.7

Source: Uganda Bureau of Statistics.

Table 13: Consumer Price Index Mbarara (Base: 2005/2006 =100)

		Food	Beverages and tobacco	Clothing and footwear	Rent, Fuel and utilities	H.hold and personal goods	Transport and communication.	Educ ation	Health, entert. & Others	All items index	Monthl y % change	Annual % change
		28.3959	5.4676	4.6135	11.8075	3.5870	13.2070	17.0981	15.8234	100.0000		
Weights												
Calendar year												
	2010	163.17	128.65	138.15	175.11	151.07	119.70	138.96	153.84	149.75		5.3
	2011	215.02	148.63	164.21	196.57	187.24	111.98	149.22	183.04	175.95		17.5
	2012	235.07	171.15	181.77	240.42	213.08	130.03	168.85	211.97	200.11		13.7
Financial year												
	2009/2010	169.53	125.74	136.52	167.71	150.21	124.42	134.32	146.77	149.13		13.7
	2010/2011	180.65	133.50	145.25	182.42	162.28	109.25	142.25	164.29	157.41		5.6
	2011/2012	230.54	165.31	182.54	219.13	207.30	124.97	159.76	202.86	192.15		22.1
Monthly												
	2010	Jan	179.19	126.16	133.79	166.36	151.40	121.67	130.92	151.54	-0.9	17.0
		Feb	165.96	126.71	136.24	172.51	153.25	121.95	138.85	148.04	-1.4	12.1
		Mar	163.66	127.04	136.54	169.25	150.43	122.05	138.94	147.37	-0.8	10.1
		Apr	163.87	127.81	136.54	178.81	150.84	127.47	139.22	148.02	1.4	9.7
		May	156.14	127.65	139.08	172.41	149.10	125.94	139.41	149.04	-1.9	7.6
		June	149.58	126.35	136.48	174.69	146.88	126.20	140.35	151.47	-0.9	5.9
		July	144.34	125.06	138.56	179.27	148.28	125.31	140.41	151.49	-0.7	4.4
		Aug	150.78	125.96	139.74	175.53	149.39	125.10	140.54	155.36	1.5	0.6
		Sep	163.96	130.39	138.82	180.80	150.49	128.27	139.84	158.76	3.7	0.5
		Oct	172.87	136.07	138.11	178.32	152.12	105.88	139.68	159.37	-0.2	-0.3
		Nov	175.54	134.23	140.14	177.44	152.15	103.55	139.65	160.50	0.3	0.3
		Dec	172.17	130.38	143.72	175.92	158.44	102.99	139.71	164.66	-0.2	-0.1
	2011	Jan	175.20	133.99	145.66	181.07	159.97	104.89	139.24	165.91	1.4	2.2
		Feb	180.78	134.52	145.37	183.87	161.56	106.43	143.95	165.60	1.9	5.6
		Mar	202.67	136.64	150.18	184.86	171.53	99.61	143.94	167.11	4.0	10.7
		Apr	210.43	139.62	152.28	189.03	176.14	101.69	143.93	168.57	2.2	11.5
		May	215.82	137.92	153.28	187.59	180.60	102.62	145.33	176.02	1.8	15.8
		June	203.24	137.17	157.12	195.39	186.66	104.67	150.84	178.12	-0.4	16.3
		July	211.11	144.46	163.04	198.91	189.58	106.68	152.16	182.53	2.7	20.3
		Aug	213.61	159.73	169.69	199.98	194.01	112.61	152.31	186.38	2.0	20.9
		Sep	242.29	163.12	175.47	203.91	204.16	123.11	154.74	194.50	7.0	24.8
		Oct	246.96	164.34	180.98	212.02	203.97	125.79	154.64	199.90	2.0	27.5
		Nov	248.16	166.05	185.82	215.46	206.07	128.82	154.85	203.52	1.1	28.5
		Dec	229.94	165.99	191.64	206.78	212.60	126.87	154.75	208.33	-2.7	25.4
	2012	Jan	211.41	166.73	196.02	218.87	209.55	128.82	155.63	209.31	-1.6	21.6
		Feb	215.62	166.99	191.20	224.44	209.90	127.88	166.70	209.62	1.8	21.5
		Mar	222.96	167.44	186.55	234.77	215.88	129.22	166.71	210.58	1.9	19.1
		Apr	245.99	175.58	182.58	242.64	215.12	131.44	167.39	210.46	4.1	21.3
		May	251.82	172.08	185.30	237.98	216.28	128.34	166.72	211.51	0.4	19.6
		Jun	226.55	171.19	182.24	233.83	210.44	130.01	170.48	207.70	-3.8	15.5
		July	222.75	170.84	179.35	252.54	211.16	134.69	170.51	208.87	0.9	13.5
		Aug	239.69	170.19	173.69	253.51	212.52	129.53	170.20	210.03	2.1	13.6
		Sept	245.35	168.69	171.64	249.76	213.70	129.49	172.26	215.10	1.1	7.3
		Oct	245.15	170.09	176.41	246.73	213.93	130.85	172.88	215.41	0.1	5.3
		Nov	251.54	168.92	176.93	242.32	214.22	130.32	173.53	216.22	0.7	4.9
		Dec	242.05	185.09	179.39	247.60	214.29	129.77	173.15	219.53	-0.3	7.4
	2013	Jan	223.77	191.81	179.74	246.36	216.71	131.88	173.33	219.31	-2.2	6.7
		Feb	225.06	189.95	179.26	262.23	214.99	130.22	179.23	222.34	1.7	6.5
		Mar	230.52	191.75	180.01	257.21	219.73	130.97	180.45	223.78	0.9	5.4
		Apr	238.01	194.24	183.77	267.65	217.39	129.62	179.90	223.83	1.6	2.9

Source: Uganda Bureau of Statistics.

Table 14: Consumer Price Index Gulu (Base: 2005/2006 =100)

		Food	Beverages and tobacco	Clothing and footwear	Rent, Fuel and utilities	H.hold and personal goods	Transport and communication.	Educatio n	Health, entert. & Others	All items index	Monthl y % change	Annual % change	
		38.0052	8.5146	3.7431	15.6811	4.6634	5.9713	12.6084	10.8130	100.0000			
Weights													
Calendar year													
	2010	173.4	147.34	127.09	165.93	154.44	125.88	157.79	127.77	157.65		2.2	
	2011	237.0	169.49	143.14	197.02	192.27	129.69	170.03	136.18	193.64		22.8	
	2012	261.1	207.77	163.42	231.44	219.48	155.10	202.56	150.57	220.65		14.0	
Financial year													
	2009/2010	185.4	142.23	124.25	152.16	149.91	128.33	147.42	126.13	157.97		10.2	
	2010/2011	191.1	151.85	133.21	178.40	169.52	122.65	164.57	129.55	168.51		6.7	
	2011/2012	264.1	191.10	157.26	219.13	209.60	144.69	184.67	144.55	214.25		27.1	
Monthly													
	2010	Jan	181.3	143.24	123.18	142.19	149.79	128.65	139.73	126.75	154.03	-0.7	8.8
		Feb	175.3	150.02	123.42	145.29	149.68	128.90	156.65	126.75	154.93	0.6	8.1
		Mar	178.3	150.47	124.16	163.63	150.44	128.81	156.69	126.75	159.05	2.7	6.4
		Apr	178.4	144.51	123.45	168.91	151.46	132.40	157.08	128.46	159.88	0.5	4.2
		May	177.6	143.60	123.49	174.89	152.50	131.44	157.13	128.70	160.49	0.4	2.4
		June	174.9	144.92	124.72	171.33	152.72	128.75	162.03	127.49	159.39	-0.7	0.1
		July	170.3	142.31	127.22	171.18	153.24	128.99	161.19	127.25	157.38	-1.3	-1.0
		Aug	165.1	147.46	129.16	174.51	153.38	126.89	161.09	127.25	156.31	-0.7	-2.8
		Sep	168.7	148.10	130.95	169.27	158.63	129.55	160.21	127.93	157.35	0.7	-1.7
		Oct	167.8	151.33	130.92	170.79	156.70	113.52	160.22	128.61	156.55	-0.5	0.4
		Nov	172.5	152.76	131.90	174.22	159.53	113.39	160.58	128.62	159.20	1.7	1.4
		Dec	170.2	149.32	132.54	164.97	165.22	119.26	160.87	128.62	157.28	-1.2	1.4
	2011	Jan	173.0	150.72	132.52	171.46	169.83	120.42	160.59	129.70	159.84	1.6	3.8
		Feb	185.9	153.90	133.32	173.51	175.94	123.07	169.52	128.50	166.77	4.3	7.6
		Mar	208.9	161.76	135.34	192.36	180.76	121.79	170.70	129.33	179.61	7.7	12.9
		Apr	231.9	150.94	135.99	194.58	186.26	123.94	169.97	132.00	188.38	4.9	17.8
		May	244.5	156.39	137.75	191.58	185.38	125.11	169.87	132.79	193.36	2.6	20.5
		June	234.1	157.23	140.90	192.44	189.31	125.87	169.97	134.06	190.08	-1.7	19.3
		July	256.3	160.83	142.41	192.19	194.04	125.93	171.58	136.16	199.52	5.0	26.8
		Aug	270.3	175.62	144.24	199.44	192.56	125.88	172.54	136.72	207.42	4.0	32.7
		Sep	261.2	189.62	147.72	204.09	200.45	134.57	171.88	139.14	207.08	-0.2	31.6
		Oct	267.6	187.46	151.75	213.97	206.08	134.67	171.75	145.83	211.98	2.4	35.4
		Nov	267.5	192.45	156.03	210.06	212.73	144.90	170.87	144.99	212.65	0.3	33.6
		Dec	242.4	197.02	159.74	228.54	213.93	150.10	171.16	144.99	206.94	-2.7	31.6
	2012	Jan	242.2	192.01	161.73	220.82	215.29	143.19	172.57	146.17	205.24	-0.8	28.4
		Feb	259.3	198.81	165.85	228.32	216.17	151.70	200.25	148.57	217.95	6.2	30.7
		Mar	263.8	188.32	164.28	223.04	213.01	154.51	202.12	148.35	218.12	0.1	21.4
		Apr	284.7	202.11	163.15	222.26	218.72	154.22	203.28	148.35	227.47	4.3	20.8
		May	279.3	206.86	164.85	235.06	216.83	159.72	203.17	147.67	228.06	0.3	17.9
		June	274.8	202.03	165.32	251.81	215.38	156.94	204.86	147.61	228.55	0.2	20.2
		July	265.9	214.40	160.97	250.03	217.00	155.86	205.49	150.26	226.15	-1.1	13.3
		Aug	265.1	221.48	159.34	238.52	220.76	154.74	205.33	152.39	224.91	-0.5	8.4
		Sept	264.5	216.97	164.40	221.27	226.15	160.51	208.32	153.15	222.81	-0.9	7.6
		Oct	245.6	211.23	162.12	226.69	221.52	156.19	208.21	154.29	215.57	-3.3	1.7
		Nov	242.7	219.36	164.68	223.82	222.92	157.90	208.64	153.14	214.89	-0.3	1.1
		Dec	244.6	219.66	164.36	235.69	230.05	155.77	208.48	156.88	218.08	1.5	5.4
	2013	Jan	249.7	215.81	168.33	231.10	231.22	147.91	208.07	157.40	218.71	0.3	6.6
		Feb	246.5	215.89	168.69	234.41	233.24	164.26	217.63	156.39	220.17	0.7	1.0
		Mar	253.6	215.96	170.66	232.77	232.31	155.87	218.69	156.39	222.32	1.0	1.9
		Apr	263.9	221.80	172.38	232.13	232.56	155.86	218.74	156.27	226.68	2.0	-0.4

Source: Uganda Bureau of Statistics.

Table 15 : Consumer Price Index Arua (Base: 2005/2006 =100)

		Food	Beverages and tobacco	Clothing and footwear	Rent, Fuel and utilities	H.hold and personal goods	Transport and communication.	Educa tion	Health, entert. & Others	All items index	Monthl y % change	Annual % change	
		41.5525	9.2788	5.4014	11.7798	5.5667	7.6258	6.4576	12.3373	100.0000			
Weights													
Calendar year													
	2010	169.26	151.79	142.97	138.23	138.20	140.86	141.68	130.65	152.13		-2.4	
	2011	233.92	171.25	161.99	191.90	178.65	153.51	149.45	143.80	193.49		27.2	
	2012	280.48	208.24	189.19	204.65	199.31	163.86	165.47	162.76	224.55		16.1	
Financial year													
	2009/2010	181.36	147.85	138.22	128.01	137.82	141.82	138.40	123.99	154.34		5.4	
	2010/2011	187.10	155.60	149.64	164.12	153.82	141.97	144.95	135.00	165.00		6.9	
	2011/2012	273.40	191.09	178.05	198.14	193.91	164.18	157.30	155.96	217.01		31.5	
Monthly													
	2010	Jan	165.74	150.70	138.98	133.25	137.12	140.33	136.55	126.11	148.77	-0.1	-1.3
		Feb	172.31	151.67	139.09	135.23	136.89	140.41	141.96	126.30	152.19	2.3	1.3
		Mar	163.65	156.75	138.77	132.32	136.06	141.88	141.89	126.49	148.79	-2.2	0.2
		Apr	161.75	155.59	138.66	133.20	136.04	142.68	141.59	127.21	148.12	-0.5	-4.2
		May	166.20	151.44	139.60	136.52	134.57	142.69	141.89	130.33	150.35	1.5	-4.3
		June	172.75	147.76	141.75	140.11	135.12	143.28	141.94	130.55	153.37	2.0	-3.4
		July	178.34	151.09	143.18	142.85	138.04	148.50	142.40	131.87	157.16	2.5	-2.9
		Aug	169.93	150.32	145.58	149.98	139.35	147.21	142.64	131.72	154.53	-1.7	-4.2
		Sep	172.47	149.30	146.47	139.38	140.15	147.21	142.39	134.74	154.70	0.1	-2.7
		Oct	173.54	150.48	146.46	137.33	139.26	130.08	142.20	134.83	153.65	-0.7	-4.6
		Nov	167.28	152.06	147.24	138.08	141.57	131.97	142.24	133.84	151.48	-1.4	-4.5
		Dec	167.20	154.29	149.91	140.48	144.26	134.05	142.42	133.84	152.40	0.6	2.4
	2011	Jan	174.69	167.00	149.51	148.40	154.82	135.37	143.31	134.60	158.44	4.0	6.5
		Feb	187.90	161.91	149.20	176.26	163.26	138.58	146.22	134.64	167.63	5.8	10.1
		Mar	204.11	153.73	148.86	190.91	164.24	141.52	148.22	135.48	175.83	4.9	18.2
		Apr	208.78	162.53	154.02	201.80	170.50	147.15	148.08	136.55	181.05	3.0	22.2
		May	218.86	159.34	157.51	202.48	174.43	147.63	149.06	138.44	185.76	2.6	23.6
		June	222.13	155.09	157.80	201.47	175.91	154.40	150.21	139.48	187.42	0.9	22.2
		July	248.94	177.35	160.88	175.26	184.20	155.56	150.44	141.13	198.48	5.9	26.3
		Aug	257.54	177.57	161.78	189.27	184.29	157.47	149.71	146.69	204.56	3.1	32.4
		Sep	269.54	181.97	165.44	200.59	191.93	166.53	151.57	150.53	213.19	4.2	37.8
		Oct	278.62	174.01	169.64	201.87	189.85	165.60	152.01	154.04	216.88	1.7	41.2
		Nov	273.39	186.67	180.00	211.24	194.88	166.24	152.09	156.83	218.22	0.6	44.1
		Dec	262.54	197.78	189.22	203.30	195.49	166.06	152.47	157.22	214.40	-1.8	40.7
	2012	Jan	276.13	190.39	187.40	210.25	197.45	167.03	155.43	159.52	220.74	3.0	39.3
		Feb	270.63	193.45	184.09	205.57	198.66	167.98	164.16	160.57	218.84	-0.9	30.5
		Mar	275.65	202.13	183.50	192.00	193.55	169.88	164.58	160.58	219.99	0.5	25.1
		Apr	278.99	190.85	185.29	191.34	197.00	164.86	165.06	161.02	220.25	0.1	21.7
		May	287.23	205.60	183.48	194.52	200.25	162.13	165.25	161.34	225.34	2.3	21.3
		June	301.59	215.37	185.86	202.41	199.40	160.88	164.86	162.02	233.19	3.5	24.4
		July	294.82	215.24	185.28	208.63	199.76	161.50	165.09	161.51	231.08	-0.9	16.4
		Aug	289.16	199.24	187.57	208.83	199.51	161.84	165.16	161.70	227.43	-1.6	11.2
		Sep	287.14	208.15	193.70	208.39	198.03	163.26	168.63	163.12	228.13	0.3	7.0
		Oct	276.30	225.80	188.59	216.52	202.21	160.35	169.26	165.46	226.28	-0.8	4.3
		Nov	272.06	222.33	201.04	212.34	203.20	161.67	168.90	167.94	224.82	-0.6	3.0
		Dec	256.11	230.36	204.42	204.99	202.75	164.99	169.23	168.33	218.55	-2.8	1.9
	2013	Jan	270.13	220.21	201.82	200.02	202.99	165.58	169.18	170.43	223.02	2.0	1.0
		Feb	264.96	223.23	195.52	197.54	205.10	164.44	168.58	168.86	220.32	-1.2	0.7
		Mar	269.05	235.51	196.05	199.30	204.13	166.89	168.58	169.02	223.54	1.5	1.6
		Apr	268.14	220.87	195.16	198.04	203.29	168.93	168.57	168.86	221.70	-0.8	0.7

Source: Uganda Bureau of Statistics.

APPENDIX

Table 16: AVERAGE RETAIL MARKET PRICES (UG. SHS) FOR CPI COMMODITIES - PAGES 1-5

ITEM	UNIT	CENTRE																	
		KHI		KML		JINJA		MBALE		MASAKA		MBARARA		GULU		ARUA			
		Mar 2013	Apr 2013	Mar 2013	Apr 2013	Mar 2013	Apr 2013	Mar 2013	Apr 2013	Mar 2013	Apr 2013	Mar 2013	Apr 2013	Mar 2013	Apr 2013	Mar 2013	Apr 2013		
11 Food Staples																			
Matooke (Bunch)	Ka	508	611	497	585	518	639	528	659	397	562	308	386				517	569	
Sweet potatoes	Ka	679	685	554	529	448	429	479	551	486	486	531	540	405	544		381	420	
Irish potatoes	Ka	1,182	1,181	989	1,090	953	1,007	886	958	673	974	1,041	1,177	1,563	1,481	1,480	1,480	1,443	
Cassava (fresh)	Ka	871	788	746	712	626	520	417	398	534	495	530	583	442	431	459	459	441	
Cassava flour	Ka			1,400	1,411	1,063	965	1,330	1,290			1,523	1,647	2,725	2,802	1,182	1,104		
Cassava (sun dried)	Ka													1,193	1,276				
Cassava (dry fermented)	Ka													1,115	1,118	1,014	989		
Matooke (Cluster)	Ka			601	706	619	789	754	813			441	535	1,216	1,376	698	775		
12 Fruit & vegetables																			
102 Fresh Fruit																			
Passion fruit	Ka	4,019	4,405	4,554	4,221	5,056	4,212	3,591	2,925	3,275	4,182	3,272	3,591	4,472	4,000	4,201	5,466		
Pineapples	Ka	948	1,163	959	942	736	657	885	921	599	660	843	841	1,105	1,177	1,016	1,220		
Banana-Ndizi	Ka	2,430	2,243	2,248	2,114	2,020	2,083	1,526	1,630	1,017	960	1,183	1,388	2,231	2,620	2,013	1,867		
Mangoes	Ka	1,715	1,680	1,685	1,744														
Banana-Booava	Ka	1,610	1,658	1,473	1,508	981	1,020	1,053	1,027	765	891	861	861	1,391	1,643	921	952		
Oranges	Ka	1,469	1,461	1,329	1,311	1,455	1,122	1,063	1,037	1,246	1,285	1,791	1,568	1,401	1,495	1,364	1,216		
Water Melon	Ka	1,319	1,260																
Papaya	Ka	887	820																
Avocado	Ka	1,525	1,385	1,361	1,200	1,201	1,003	850	755	569	477	718	595	1,388	1,140	799	735		
Tangerines	Ka	2,341	2,392	2,213	1,967														
103 Fresh Vegetables																			
Cabbage	Ka	720	838	687	707	483	477	298	363	422	424	376	450	503	769	1,101	779		
Bbuzaga	Ka	2,193	2,234	2,027	2,231	1,281	1,233			1,172	1,218	1,359	1,128	576	737	752	800		
Pigeon pea leaves	Ka							628	685										
Gobe leaves	Ka																		
Garlic	Ka	12,767	15,494																
Carrots	Ka	2,006	1,720	1,614	1,406	2,384	1,860	1,619	1,918	1,542	1,646	2,554	2,362			2,341	2,104		
Tomatoes, big	Ka	1,829	2,322	1,627	2,337	1,665	2,123	1,245	1,697	1,105	1,632	1,448	1,474	1,191	1,718	1,170	1,087		
Onions big	Ka	2,318	2,132	2,083	1,854	2,210	2,517	1,750	1,885	1,953	2,196	2,494	2,183	1,906	2,048	2,128	2,169		
Egg plant	Ka	1,634	1,252	1,463	1,040	882	637	1,389	899	1,272	852	1,688	1,538	2,042	1,501	1,490	1,283		
Bitter tomatoes	Ka	2,104	1,919	1,603	1,352	1,294	881	1,546	1,422	1,340	1,235	1,045	892	3,175	2,387	940	798		
Green Pepper	Ka	4,840	4,135	4,357	3,351	4,152	3,193	3,635	3,770	3,279	2,597	3,771	3,158	4,323	4,338	3,450	3,816		
Beans fresh	Ka	4,498	4,698																
Pumpkin	Ka	847	883	732	887														
104 Dried Vegetables																			
Dried beans (Nambale)	Ka	2,596	3,136	2,273	2,612	2,000	2,232	1,800	2,000	1,797	2,175	2,154	2,500						
Dried beans (Kanvebwa)	Ka	2,638	3,171	2,265	2,612	2,000	2,200	1,897	2,000	1,766	2,000								
Dried beans (Kaula)	Ka											2,154	2,500						
Dried Beans (Museveni)	Ka													3,299	3,293	2,034	2,542		
Dried beans (Yellow)	Ka													1,345	1,520	2,743	2,854		
Groundnuts (unpounded)	Ka	4,611	4,819	4,201	4,118	3,400	3,500	3,500	3,697	3,793	3,745	4,000	4,000	3,658	3,739	3,769	3,522		
Groundnuts (pounded)	Ka	4,880	5,224	4,451	4,382	3,400	3,500	3,500	3,697	3,879	3,862	4,000	4,000	4,642	4,642	6,819	6,554		
Cow peas yellow	Ka	4,079	4,000	3,781	3,796	3,500	3,659	3,500	3,500	3,912	4,000	4,000	4,000	1,644	1,672	2,000	2,000		
Peas Lapena	Ka																		
13 Meat & poultry																			
Meat (beef)	Ka	8,000	8,000	7,872	7,848	8,000	8,000	8,000	8,000	8,000	8,000	7,000	7,000	9,000	9,000	7,329	7,329		
Meat (Goat)	Ka	10,153	10,153	9,913	10,109	9,000	9,000	8,653	8,653	9,000	9,240	9,000	9,000	10,000	10,000	9,000	9,000		
Meat (Pork)	Ka	8,000	8,000	8,126	8,269	8,000	8,000			7,319	7,319	9,322	9,117	8,653	8,000	8,000	8,000		
Chicken (Cock)- local	Ka	11,420	11,456	11,346	11,340	9,634	8,646	9,208	9,217	11,922	10,785			9,682	8,230	10,354	9,480		
Chicken (Hen) - local	Ka	10,982	11,516	11,397	11,058	10,320	9,702	9,660	8,811	10,000	10,229	10,995	11,547	9,063	9,135	10,354	8,360		
Turkev meat	Ka							10,000	10,000										
14 Fish																			
Fish - Mukene	Ka	9,677	10,021	7,787	7,588	7,147	7,421	8,930	9,110	5,283	5,648	9,448	8,618	8,584	7,929	8,713	8,861		
Fish - Dried Nileperch	Ka	14,170	16,725	12,279	13,465	12,352	11,986	12,161	14,063	11,074	12,326	13,616	15,974						
Fish - Fresh Tilapia	Ka	8,835	8,947	8,256	8,481	6,746	6,734	7,743	7,938	8,008	10,378	10,220	9,834	7,627	9,116	16,056	15,398		
Fish - Dried Tilapia	Ka	23,072	26,961	17,753	20,069	22,007	20,000	39,493	35,890	14,961	13,166	23,187	21,224	13,402	14,598	17,844	15,502		
Fish - Anqara	Ka													19,675	20,045	18,540	21,455		
107 Milk & eags																			
Milk local pack	Ltr	2,000	2,000	2,000	2,000	2,400	2,400												
Milk (Fresh)	Ltr			1,213	1,209	1,235	1,235	1,247	1,243	1,159	1,005	945	968	1,303	1,386	2,000	1,793		
Eaas (unit)	2 eaas			608	608	600	600	700	700	600	600	600	600	665	700	700	700		
Eaas (Trav)	Tin	8,159	8,161																
Powdered milk	Tin	23,135	23,530																
108 Bread & cereals																			
Rice	5Ka/Ka	47,622	45,248	3,276	3,363	3,200	3,200	3,348	3,293	3,032	3,032	3,397	3,500	2,287	2,465	3,132	3,201		
Maize flour	5Ka/Ka	14,484	14,723	1,891	1,900	1,783	1,600	1,731	1,731	1,697	1,748	1,931	1,864	1,864	1,800	1,931	2,071		
Millet flour	Ka	4,336	4,413	2,604	2,602	2,000	2,000	2,433	2,466	2,823	2,823	3,347	3,041	2,465	2,745	2,714	2,679		
Maize arains	Ka													1,019	1,044	1,120	1,251		
Bread (Loaf)	1Ka/500a	3,677	3,500	1,844	1,772	1,931	1,960	1,850	1,916	1,800	1,944	2,154	2,008	1,907	1,873	2,175	2,222		
Biscuits	Tin/200 am	14,017	14,456	2,192	2,179	2,000	1,996	2,000	2,000	2,065	2,032	2,500	2,321	2,000	2,000	1,766	1,766		
Buns	200a			723	701	801	771	715	706	800	767	1,048	800	722	826	956	956		
Sorghum arains	Ka													888	822	1,048	1,058		

ITEM	UNIT	CENTRE															
		KHI		KML		JINJA		MBALE		MASAKA		MBARARA		GULU		ARUA	
		Mar 2013	Apr 2013	Mar 2013	Apr 2013	Mar 2013	Apr 2013	Mar 2013	Apr 2013	Mar 2013	Apr 2013	Mar 2013	Apr 2013	Mar 2013	Apr 2013	Mar 2013	Apr 2013
Domestic corn Sim Sim	500 q Kq	2,345	2,342	2,322	2,299	4,413	6,000	4,000	4,636			8,333	8,321	4,000	4,763	4,862	5,392
109 Sugar,tea & spices																	
Brown sugar	Ka	3,395	3,240	3,249	3,105	3,132	3,000	3,132	3,000	3,098	3,000	3,248	3,000	3,132	3,000	3,186	3,175
Coffee	50 q	10,394	10,296														
Tea baads/ Tea leaves	Pkt/50q/20q	4,266	4,310	1,508	1,500	1,500	1,500	1,500	1,500	1,500	1,500	1,549	1,600	100	100	100	100
Tea Leaves (loose)	250q			1,435	1,462	1,942	1,957	2,502	2,427	1,449	1,558	1,431	1,431	1,304	1,430	2,312	2,055
Salt	500q	473	482	435	464	400	400	400	400	400	400	464	431	521	559	500	500
110 Oils & fats																	
Local Ghee	Ka	16,609	16,743	15,202	14,770					14,000	14,162	12,324	12,324				
Marqarine	500a/250a	4,912	4,766	2,789	2,728	2,800	2,800	2,664	2,696	3,000	2,898	3,000	3,000	3,000	3,000	2,696	2,596
Cooking fat	500q	3,777	3,597	3,621	3,623	3,500	3,500	3,500	3,500	3,500	3,500	3,793	3,000	4,000	4,160	4,000	4,000
Refined oil	3 ltrs/300ml	20,462	20,735	1,563	1,560	1,733	1,666	1,666	1,633	1,533	1,615	1,864	1,864	1,766	1,766	1,631	1,759
2 Beverages & Tobacco																	
201 Non-alcohol.beveraq.																	
Bottled soda	300ml	1,000	1,000	1,000	1,000	1,000	1,000	1,000	1,000	1,000	1,000	1,000	1,000	1,000	1,000	1,000	1,000
Mineral Water	500ml	1,000	1,000	901	944	1,000	1,000	862	800	963	963	765	824	1,000	1,000	782	800
202 Alcoholic beverages																	
Brewed bottled beers	500ml	3,000	3,000	3,000	3,000	3,000	3,000	3,000	3,000	3,000	3,000	3,000	3,000	2,910	3,000	3,000	3,000
Warraq (crude)	300ml			2,779	2,820	3,231	3,264	2,369	2,369	2,312	2,534	2,784	2,784	1,135	1,266	925	817
Malwa	2 Ltrs			3,068	3,063	2,862	2,844	2,757	2,879	3,333	3,096	2,893	3,000	1,789	1,590	2,523	2,248
Spirits	750ml	17,816	17,701														
Wines	750ml	33,531	33,135														
203 Tobacco																	
Cigarettes	Pkt	4,606	4,561	2,434	2,445	2,500	2,500	2,500	2,500	2,500	2,500	2,500	2,431	2,400	2,433	2,431	2,431
Tobacco leaves	Ka													10,824	11,134	21,840	17,105
Clothing & Footwear																	
31 Clothing																	
301 Men clothing																	
Trousers.	1 Unit	94,912	98,305	35,000	35,000	20,000	20,000	18,643	18,643	20,000	20,000	15,940	16,452	24,746	25,000	25,000	25,000
Dress Shirt	1 Unit	93,217	96,549	33,247	35,000	20,000	20,000	17,660	18,292	17,871	17,321	15,492	16,333	20,000	19,480	20,000	20,000
T shirt	1 Unit	63,164	64,872	28,231	31,582	20,000	20,000	15,639	16,619	12,742	13,473	16,305	15,940	16,476	17,000	8,000	8,000
Jeans brand imitation	1 Unit	86,635	88,301	38,259	38,259	25,000	25,000	18,292	17,544	21,147	21,147	18,292	19,310	25,000	25,000	25,000	25,000
Two piece Suit	1 Unit	732,949	791,029	193,277	196,610	184,391	169,706	179,815	189,824	126,885	132,066	150,000	144,914	359,861	359,861		
Underpants- briefs	1 Unit	38,259	38,259	5,000	5,000	2,000	2,000	2,000	2,000	3,000	3,000	2,910	3,000	2,115	2,364	1,000	1,000
Socks.	1 pair	30,000	30,000	5,000	5,000	2,000	2,000	2,000	2,000	1,414	1,414	2,000	2,140	1,500	1,500	1,000	1,000
Neckties	1 Unit	46,416	46,416	6,000	6,000	5,000	5,000	3,826	3,869	5,000	5,439	5,000	4,642	3,615	3,615	4,000	4,000
302 Women clothing																	
Blouse & skirt suit	1 Unit	350,000	350,000	85,000	83,721	74,833	74,833	74,889	78,297	64,904	66,117	58,285	60,000	51,193	51,193	72,111	69,282
Trouser suit	1 Unit	350,000	350,000	85,000	85,000												
Straight dress	1 Unit	106,266	106,266	48,700	48,700							58,285	60,000	51,193	51,193		
Straight skirt	1 Unit	73,186	74,889	37,417	37,417	20,000	20,000	18,643	18,643	20,000	20,000	17,321	17,321	25,981	25,000	28,460	28,983
Jeans skirt	1 Unit	80,000	80,000	38,259	38,259	25,323	25,987	19,310	19,933	20,000	20,000	19,310	20,648	25,000	25,000	32,404	32,404
Brassieres.	1 Unit	31,582	33,247	7,000	7,000	3,000	3,000	3,659	3,659	3,464	3,240	4,472	4,309	3,000	3,000	4,000	4,000
Ladies briefs	1 Unit	25,000	25,000	5,000	5,000	3,000	2,804	2,500	2,500	3,000	3,224	2,739	3,107	2,213	2,340	4,000	4,000
303 Children clothing																	
Two piece Boys clothing	1 Unit	58,285	58,285	40,000	41,602	30,000	30,000	25,000	26,316	33,677	34,820	28,663	29,580	32,801	33,677	35,000	35,000
Two piece Girls clothing	1 Unit	51,614	51,614	36,593	36,593	30,000	30,000	26,316	26,637	33,677	33,677	30,000	33,677	34,225	35,247	35,000	35,000
Disposable diapers	1 pkt	6,557	6,840	6,460	6,722												
Baby dress with	1 Unit	40,000	40,000	30,000	31,582	15,000	15,000	14,326	14,659	15,000	15,000	16,119	15,000	15,123	15,000	20,000	20,000
Children Socks	1 pair	5,000	5,000	2,000	2,000	2,000	2,000	1,000	1,000	1,732	2,000	2,000	1,936	1,107	1,107	3,000	3,000
304 Other clothings																	
Kitenqe wax materials	6 yards	66,626	70,000	40,000	40,000	35,000	35,000	35,330	35,330	32,237	37,224	39,686	35,000	39,600	41,248	25,000	25,000
Traditional wear material	6 yards	236,482	236,482	42,426	42,426	30,000	30,000	24,315	25,962	25,000	22,361	42,426	42,426				
Tailorinq charaqes(Simple)		23,208	23,208	10,000	10,000	8,653	8,320	7,884	7,884	8,944	8,944	10,954	11,720	10,000	10,000	8,618	8,618
2nd Hand shirts	Bale			856,422	856,422	856,422	856,422	856,422	856,422	856,422	856,422	856,422	856,422	856,422	856,422	856,422	856,422
2nd Hand dresses	Bale			566,298	566,298	566,298	566,298	566,298	566,298	566,298	566,298	566,298	566,298	566,298	566,298	566,298	566,298
2nd Hand baby rumaqe	Bale			405,106	405,106	405,106	405,106	405,106	405,106	405,106	405,106	405,106	405,106	405,106	405,106	405,106	405,106
Corporine white	1 Meter	2,739	2,657	2,816	2,892	3,000	3,000	3,000	3,000	2,823	2,698	2,739	2,739	3,000	3,000	3,000	3,000
305 Footwear																	
Men's leather shoes	1 pair	137,945	147,972	61,016	62,644	60,000	60,000	61,016	62,644	61,016	62,644	61,016	62,644	61,016	62,644	61,016	62,644
Women's leather shoes	1 pair	62,449	62,449	31,463	33,504	35,000	35,000	31,463	33,504	31,463	33,504	30,430	33,504	31,463	33,504	31,463	33,504
Child leather shoes	1 pair	54,999	54,999	28,173	26,918	35,000	35,000	28,173	26,918	28,173	26,918	28,173	26,918	28,173	26,918	28,173	26,918
Adult slippers	1 pair	3,983	4,079	4,261	4,218	4,160	4,327	4,500	4,500	4,000	4,000	3,826	4,000	3,826	3,826	3,000	3,000
4 Rent. Fuel & Utilities																	
401 Rent																	
Rent 1: Single room	1 Month			61,673	73,210			31,852	34,856	50,449	48,862	45,256	44,888	52,972	54,058	25,000	25,000
Rent 2: Double room	1 Month			105,942	120,276	60,701	62,924	103,154	101,598	73,238	74,381	115,596	115,596	120,094	119,279	48,486	50,057
Rent 3: Trippel etc.	1 Month			407,163	407,163	296,350	296,350	347,603	347,603	201,783	201,783	271,081	328,750	281,119	282,192	493,126	493,126
Grass thatched houses	1 Month																

ITEM	UNIT	CENTRE															
		KHI		KML		JINJA		MBALE		MASAKA		MBARARA		GULU		ARUA	
		Mar 2013	Apr 2013	Mar 2013	Apr 2013	Mar 2013	Apr 2013	Mar 2013	Apr 2013	Mar 2013	Apr 2013	Mar 2013	Apr 2013	Mar 2013	Apr 2013	Mar 2013	Apr 2013
Rent 3: Semi detached	1 Month	416,017	416,017														
402 House Repair & Cement	50 kg Bag	28,289	28,610	28,227	27,956	27,000	27,000	27,166	27,332	29,246	28,967	30,000	30,000	30,000	30,000	31,000	31,000
Paint	4 ltr	7,658	7,658	7,156	7,228	6,000	6,329	7,000	7,000	5,828	5,662	11,324	10,970	10,000	10,000	7,000	7,000
Iron Sheets	30 gauge piece	28,083	27,615	27,568	27,467	26,164	25,000	26,166	25,826	26,208	25,820	19,899	19,332	28,000	27,831	25,329	25,831
Timber		10,691	10,635														
Fuel, elec. & water																	
Electricity	150kw	87,683	87,683	87,683	87,683	87,683	87,683	87,683	87,683	87,683	87,683	87,683	87,683	87,683	87,683	87,683	87,683
Paraffin. Kerosene	One ltr	2,829	2,874	2,829	2,874	2,790	2,866	2,862	2,863	2,850	2,862	2,881	2,898	2,885	2,935	2,966	2,962
Charcoal	Sack/Kg	67,751	66,560	79	715	638	644	716	672	683	680	773	783	575	579	471	448
Water metered		8,525	8,525	8,525	8,525	8,525	8,525	8,525	8,525	8,525	8,525	8,525	8,525	8,525	8,525	8,525	8,525
Water unmetered	20 Ltr			114	114	200	200	126	200	144	144	126	126	200	200	200	200
Fire wood	Ka	178	202	178	202	221	222	236	222	148	153	234	259	175	166	141	161
Propene gas	12-15Ka	101,895	102,086														
5 Household & Personal Soap, toiletries etc																	
Washing soap	Ka	3,836	3,932	3,711	3,583	3,925	3,925	3,623	3,606	3,571	3,571	3,752	3,571	3,532	3,532	3,668	3,585
Detergent Powder	500a/100 a	6,915	7,212	1,087	1,160	1,000	1,000	1,000	1,000	1,000	1,000	1,077	1,077	1,000	1,000	600	727
Bathing soap	225a	2,421	2,414	2,444	2,448	2,500	2,500	2,500	2,500	2,500	2,500	2,500	2,500	2,500	2,500	2,431	2,330
Toothpaste	25 ml	2,264	2,239	1,508	1,508	1,333	1,430	1,500	1,500	1,500	1,500	1,500	1,500	1,200	1,232	1,232	1,232
Toilet paper	Blk/Roll	1,112	1,154	494	507	500	500	500	500	431	431	431	415	500	500	500	500
Shoepolish	100 ml	4,654	4,632	4,452	4,498	4,500	4,500	4,500	4,500	4,000	4,146	4,500	4,152	5,328	5,500	4,327	4,327
Matches	Box	901	830	100	100	100	100	100	100	100	100	100	100	100	100	100	100
Sanitary pads	1 pkt	2,386	2,428	2,645	2,585	2,500	2,500	2,500	2,500	2,500	2,500	2,500	2,500	3,000	3,158	2,321	2,321
Vaseline	250 a	6,581	6,598	6,701	6,858	6,533	6,500	6,500	6,581	3,879	3,826	6,500	6,316	3,500	3,500	3,000	3,000
Travel bags	one	20,984	20,758	16,898	17,055	15,000	15,000	15,000	15,000	15,000	15,000	12,490	12,961	20,616	20,616	10,000	10,627
Hair food	Tin	1,732	1,827	1,612	1,732	1,500	1,500	1,333	1,366	1,175	1,200	1,500	1,445	1,500	1,500	1,500	1,500
Skin powder	100 a	6,559	6,278														
Hand & Body lotion	250 mls	8,341	8,358														
Baby oil	250 a	12,158	12,436														
Deodorant	50 mls	8,971	8,803														
502 HH textile & furnit.																	
Textile 1(Jinja plain)	Meter	6,214	6,188	6,066	5,788	5,000	5,000	5,328	5,328	5,621	5,500	5,244	5,477	5,000	5,000	8,000	8,000
Textile 2(Corporine)	Meter	2,657	2,577	2,816	2,870	3,000	3,000	2,657	2,657	2,649	2,600	2,739	2,739	3,000	3,000	3,000	3,000
Blankets	one	48,911	50,970	12,531	14,323	11,972	12,658	13,000	12,490	12,175	12,490	10,000	10,000	12,000	12,000	10,000	10,000
Bedding mattress	one	781,953	832,188	73,321	71,869	56,786	55,201	59,939	59,821	63,651	60,207	57,076	56,410	80,599	80,296	91,446	92,516
Furnit.1: Bed (wooden)	one	1,573,213	1,697,056	217,735	217,074	157,529	159,798	129,051	128,139	160,155	160,155	122,213	120,190	103,601	103,601	170,665	164,637
Furnit.2: Side Board	one			490,737	501,810	413,712	450,093	584,227	595,470	314,980	314,980	269,178	269,178	346,410	346,410	761,894	761,894
Plastic carpet	Meter			7,172	6,936	7,319	7,000	6,487	6,316	7,000	7,000	5,477	5,477			7,483	7,483
Furnit.3: Coffee set	one	637,122	637,122	228,014	227,608	252,269	262,926	225,732	218,225			168,702	168,702	173,205	173,205	211,990	223,127
Furnit.4: Johnston set	one			482,745	482,745	319,719	319,719	229,148	244,709	250,000	250,000	201,727	207,112	223,607	223,607	300,185	294,675
Furnit.5: Dinning table	one	2,738,613	2,817,313														
Furnit.6: Sofa set	one	3,646,917	3,741,657														
Papyrus Mat	one													3,000	3,000		
Woolen Carpet	one	289,828	324,037														
53 HH & pers.equip.nes																	
Electric kettle / Jua	one	79,224	80,608	28,732	28,455												
Charcoal stove	one			8,437	8,625	7,000	7,000	5,161	5,000	5,828	5,828	5,313	5,313	7,500	7,500	8,000	8,000
Plastic mug	one			746	764	559	592	500	500	665	648	682	665	500	500	746	765
Sulfuria	one	8,220	8,383	8,111	7,910	6,663	6,829	8,000	8,163	5,466	5,828	5,646	5,646	6,500	6,663	5,662	5,413
Jerrycan	one	6,796	6,704	6,344	6,548	7,000	7,246	7,000	7,000	7,000	7,000	6,500	6,225	6,000	6,000	6,500	6,500
Electric Bulb	one	1,500	1,500	1,469	1,528	1,411	1,500	1,245	1,364	1,364	1,328	1,500	1,500	1,500	1,500		
Extension cable	one	10,255	10,309	9,493	9,135	6,649	7,429	7,000	7,000	7,319	7,319	8,000	7,746	10,954	10,954		
Television Set (Coloured)	one	464,758	464,758	384,174	397,906	350,000	350,000	317,288	317,288	317,069	317,069	234,521	234,521	409,878	409,878	265,665	265,665
Electric irons	one	103,225	105,062	60,578	62,838	63,289	65,808	61,622	60,930	56,093	54,886	52,440	54,772	54,000	53,498		
Dry Cells	1 pair	2,531	2,595	1,483	1,456	1,300	1,300	1,216	1,232	1,349	1,364	1,360	1,430	1,500	1,500	1,200	1,160
Radio (Portable)	one			25,346	25,524	25,000	25,000	26,662	25,987	25,000	25,000	23,495	24,495	23,249	23,000	21,544	21,544
Hifi Set	one	933,032	966,213														
Plastic basins	one			4,987	4,834	4,000	4,079	4,079	4,079	3,710	4,160	4,661	4,661	3,659	3,659	3,902	3,979
Plastic bucket	one	8,679	9,408														
Kerosene Lamp	one			15,763	15,889	13,976	13,976	14,659	14,659	14,873	15,492	15,000	15,000	15,492	15,492	15,000	15,000
Candles	pkt	2,149	2,143	1,997	1,998												
61 Transport & Taxi & bus fares																	
Bus Fare (Long distance)	One way	24,962	24,962	24,962	24,962	19,168	19,168	21,779	21,779	14,142	14,953	15,651	14,565	23,029	23,029	32,404	35,000
Motorcycle fares	One way			1,500	1,500	1,000	1,000	1,000	1,000	1,325	1,325	1,316	1,316	2,239	2,408	2,040	2,040
Taxifare long distance	One way	19,574	19,574	19,574	19,574	10,000	10,000	12,247	12,247	9,283	9,283	13,925	13,925	16,510	17,784	25,000	25,000
Taxifare medium	One way	7,560	7,560	7,560	7,560	3,915	3,915	4,618	4,618	4,107	4,107	7,000	7,000	10,000	9,283	9,865	10,627
Taxifare Short distance	One way			1,132	1,132	1,030	942	794	794	1,000	1,000	2,621	2,621	2,913	3,130	3,873	3,873
Bicycle fares	One way			595	595	562	500	473	473	200	200	446	446	1,525	1,525	1,070	1,070
Special Hire	One way	16,227	16,227														
603 Other t&c costs																	
Motor fuel (Petrol)	Ltr																

ITEM	UNIT	CENTRE															
		KHI		KML		JINJA		MBALE		MASAKA		MBARARA		GULU		ARUA	
		Mar 2013	Apr 2013	Mar 2013	Apr 2013	Mar 2013	Apr 2013	Mar 2013	Apr 2013	Mar 2013	Apr 2013	Mar 2013	Apr 2013	Mar 2013	Apr 2013	Mar 2013	Apr 2013
Gear & Diff.Oil	1 litre	12,301	12,550	12,033	12,051	11,310	11,310	11,708	11,657	8,967	8,984	9,725	9,817	209,689	209,689	226,826	226,826
Adult Bicycle	one			233,286	233,286	216,250	201,757	225,789	231,424	192,319	192,319	196,653	196,653				
Children Bicycle	one	159,961	162,443														
Bicycle tyre	one			17,544	17,544	13,986	13,784	10,382	10,784	9,487	9,407	11,089	10,801	15,000	15,000	10,519	10,198
Bicycle tube	one					4,279	4,169	4,561	4,522	3,169	3,065	3,350	3,224	5,400	5,434	4,413	4,413
Bicycle Spoke	qross					9,074	9,166	8,445	8,773	8,318	8,318	9,000	9,487	8,411	8,067	9,140	9,140
Bicycle Ball bearings	1 dozen					658	669	566	553	707	707	500	500	1,063	1,063	900	900
Fixed Telephone charges		198	198	198	198	198	198	198	198	198	198	198	198	198	198	198	198
Mobile Telephone		229	229	229	229	229	229	229	229	229	229	229	229	229	229	229	229
Internet services	per hour	3,434	3,434	1,556	1,556	1,500	1,500	1,500	1,500	1,694	1,694	1,543	1,543	1,500	1,500	1,500	1,500
Motor cars (2nd hand	one	13,917,952	14,086,980														
Parking fees	1st 2 hours	19,442	19,442														
8 Health, Entertainment & Health																	
811 Treatment for Diabetes																	
Drua: Glibenclamide	Dose	3,230	3,230														
Drua: Metformin	Dose	3,018	3,018														
Drua: Insulin Zinc	Dose	18,043	18,043														
812 Treatment for																	
Drua: Bendrofluazide	Dose	979	979														
Drua: Propranolol (nderal)	Dose	979	979														
813 Treatment for Malaria																	
Drua: Coartem	Dose			10,091	10,091	6,053	6,053	3,159	3,159	8,050	8,050	12,000	12,000	10,295	10,295	7,135	7,135
Drua: Quinine	Dose			9,359	9,359	6,054	6,054	7,853	7,853	7,469	7,469	6,494	6,494	5,499	5,499	8,627	8,627
Drua: Fansider	Dose			1,787	1,787	1,683	1,683	2,432	2,432	1,263	1,263	1,377	1,377	1,065	1,065	1,176	1,176
814 Treatment for intestinal																	
Drua: Mabendazole	Dose			875	875	805	805	1,719	1,719	523	523	670	670	667	667	574	574
Drua: Zentel	Dose			2,515	2,515	1,968	1,968	2,340	2,340	1,466	1,466	2,449	2,449	1,594	1,594	1,456	1,456
815 Treatment for couahs																	
Drua: Septrin	Dose			2,380	2,380	1,414	1,414	1,414	1,414	1,513	1,513	1,778	1,778	1,137	1,137	1,246	1,246
Drua: Couah syrup	Dose			3,172	3,172	3,409	3,409	3,390	3,390	2,395	2,395	2,884	2,884	2,234	2,234	1,904	1,904
Drua: Amoxicillin	Dose			5,416	5,416	3,210	3,210	3,519	3,519	3,000	3,000	3,000	3,000	3,094	3,094	3,253	3,253
816 Treatment for Aches &																	
Drua: Paracetamol	Dose			1,655	1,655	843	843	1,558	1,558	1,039	1,039	1,039	1,039	575	575	508	508
Drua: Ibuprofen	Dose			1,770	1,770	523	523	1,332	1,332	1,258	1,258	1,584	1,584	763	763	618	618
81(a) Treatment for Diarhoea																	
Drua: Metronidazole	Dose			3,251	3,251	2,115	2,115	1,817	1,817	2,289	2,289	2,866	2,866	1,483	1,483	1,519	1,519
Drua: Loperamide	Dose			3,235	3,235	1,026	1,026	1,694	1,694	1,800	1,800	2,546	2,546	1,188	1,188	1,800	1,800
81(h) Treatment for skin																	
White field ointment	Dose			3,000	3,000	2,154	2,154	1,906	1,906	1,917	1,917	3,000	3,000	1,351	1,351	2,221	2,221
81(i) Treatment for Peptic																	
Drua 1: Magnesium	Dose	3,190	3,190	2,632	2,632	2,049	2,049	1,612	1,612	1,516	1,516	1,485	1,485	683	683	783	783
Drua 2: Omeprazole	Dose	21,689	21,689	21,463	21,463	17,805	17,805	8,298	8,298	11,056	11,056	10,734	10,734	10,349	10,349	12,790	12,790
Drua 3: Amoxyciline	Dose	8,053	8,053	7,135	7,135	4,200	4,200	4,273	4,273	4,200	4,200	4,200	4,200	4,234	4,234	4,892	4,892
81(i) Obstetrics &																	
Antenatal care	1 Person	314,265	314,265	40,911	40,911	5,477	5,477	30,827	30,827	5,477	5,477	36,742	36,742	6,475	6,475	5,000	5,000
Normal deliveries	1 Person	843,433	843,433	137,616	137,616	31,623	31,623	72,841	72,841	31,431	31,431	122,474	122,474	16,850	16,850	5,000	5,000
Deliveries with caesarian	1 Person	1,966,095	1,966,095	695,205	695,205	354,902	354,902	529,849	529,849	237,000	237,000	705,213	705,213	58,500	58,500	50,000	50,000
81(k) Dental care charges																	
Tooth Extraction	1 Person			15,037	15,037	10,000	10,000	21,400	21,400	7,000	7,000	15,000	15,000	10,829	10,829	6,000	6,000
Temporarily filling	1 Person	56,924	56,924														
Permanent filling	1 Person	68,031	68,031														
81(l) Other Medical charges																	
Hospitalisation fee	1 Person	81,244	81,244	9,278	9,278	10,000	10,000	7,319	7,319	10,000	10,000	6,325	6,325	24,103	24,103	15,000	15,000
Consultation fee	1 Person	19,310	19,310	5,308	5,308	4,472	4,472	4,424	4,424	4,472	4,472	8,143	8,143	3,390	3,390	2,551	2,551
Laboratory test HIV & Laboratory test (malaria)	1 Person	30,652	30,652														
Other Educ expenses	1 Person			3,266	3,266	2,823	2,823	2,140	2,140	2,449	2,449	3,080	3,080	2,174	2,174	1,316	1,316
School uniform	One	25,444	25,444	25,444	25,444	23,333	23,333	23,333	23,333	22,635	22,635	21,041	21,041	33,333	33,333	22,857	22,857
Uniform material	Meter	4,280	4,322	4,220	4,254	4,000	4,000	4,000	4,000	3,623	3,647	3,742	3,742	6,000	6,000	4,000	4,000
Exercise books	One	7,781	7,544	301	300	200	200	200	200	200	200	200	200	200	200	200	200
Ream Paper	One	14,933	15,295	13,924	14,659	8,000	8,000	8,000	8,000	8,427	9,390	8,081	7,319	9,000	9,000	8,000	8,000
Pen	One	500	500	500	482	400	400	500	500	400	400	500	464	500	500	431	431
Geometry Set	One	2,076	2,205	2,101	2,101	1,500	1,500	1,817	1,817	1,931	1,931	1,594	1,651	2,000	1,817	1,500	1,500
Text book	One	37,771	37,620	37,771	37,620	29,069	29,069	33,072	34,103	37,771	37,620	37,771	37,620	37,771	37,771	47,408	47,270
Photocopy	One	100	100	114	100	100	100	100	100	100	100	100	100	112	112	100	100
School bag	One	11,224	11,224	10,254	10,638												
Metalic suit case	One	133,282	135,790	38,645	41,547	33,247	33,247	50,000	48,274	37,417	37,417	45,000	42,426	71,628	71,665	65,000	65,000

ITEM	UNIT	CENTRE															
		KHI		KML		JINJA		MBALE		MASAKA		MBARARA		GULU		ARUA	
		Mar 2013	Apr 2013	Mar 2013	Apr 2013	Mar 2013	Apr 2013	Mar 2013	Apr 2013	Mar 2013	Apr 2013	Mar 2013	Apr 2013	Mar 2013	Apr 2013	Mar 2013	Apr 2013
802 Other goods & serv.																	
Newspaper	One	1,500	1,500	1,500	1,500	1,500	1,500	1,500	1,500	1,500	1,500	1,500	1,500	1,500	1,500	1,500	1,500
Soccer admission	One	5,000	5,000	5,000	5,000	5,000	5,000	1,500	1,500	1,000	1,000	1,732	1,732				
Theatre admission	One	31,623	31,623	14,142	14,142												
Film show	One	19,730	19,730	200	200	422	422	300	300	200	200	500	500	100	100	300	300
Disco fee admission	One	15,431	15,431	13,554	13,554	2,000	2,000	3,000	3,000	3,873	3,873	5,477	5,477	2,904	2,904	4,217	4,217
Laundry and Drying services	Per Night	9,133	9,133	10,637	10,637	6,395	6,395	5,051	5,253	3,645	3,798	7,103	7,103				
Photographs	2 Copies	371,932	370,133	32,411	32,411	14,052	14,052	17,962	17,962	10,182	10,182	14,939	15,329	24,414	24,414	16,799	16,478
Video coverage		10,000	10,000	3,409	3,409	2,542	2,542	2,376	2,376	2,621	2,621	2,711	2,711			2,449	2,449
Radio announcements		500,000	524,404	297,196	297,196	275,892	275,892	250,000	250,000	223,289	223,289	387,298	387,298			144,062	144,062
		7,071	7,071	2,000	2,000	2,289	2,289	4,309	4,309	1,957	1,957	4,642	4,642			5,439	5,439
Saloons																	
Straight perm (Retouch)	1 Head	46,058	46,058	19,455	20,134	15,000	15,639	23,410	22,388	25,981	24,495	28,231	26,207	18,028	18,028	15,000	15,000
Plaiting	1 Head	56,924	56,924	17,680	18,422	17,321	18,612	20,380	20,645	24,495	24,495	15,874	15,874	20,616	20,000	15,000	15,000
Straight perm	1 Head	28,117	28,117	8,366	8,366	5,313	5,593	8,040	8,040	11,832	11,832	10,000	9,283	10,000	10,000	10,000	10,000
Men's hair cut	1 Head	8,367	8,367	3,550	3,550	1,189	1,189	2,551	2,551	2,884	2,884	2,621	2,621	2,236	2,236	1,500	1,500
Meals in Restaurants																	
Soda	300 ml	2,846	3,139	1,401	1,401	1,000	1,000	1,369	1,369	1,251	1,251	1,275	1,275	1,355	1,355	1,293	1,293
Tea	150ml cup	8,625	8,625	1,587	1,587	1,000	1,000	1,047	1,047	1,275	1,275	1,375	1,375	1,565	1,565	1,726	1,726
Passion fruit juice	1 glass	7,037	7,037	1,831	1,831	1,000	1,000	1,817	1,817	1,225	1,355	1,698	1,698	1,934	1,934	1,000	1,000
Breakfast (Food)		33,977	33,977	2,711	2,711	2,000	2,000	3,118	3,118	1,783	1,783	1,782	1,782	3,080	3,080	1,844	1,844
Lunch		36,429	36,429	5,765	5,765	3,990	4,069	4,717	4,717	4,481	4,584	5,201	5,277	5,384	5,384	4,453	4,453
Education		Term III 2,012	Term I 2,013	Term III 2,012	Term I 2,013	Term III 2,012	Term I 2,013	Term III 2,012	Term I 2,013	Term III 2,012	Term I 2,013	Term III 2,012	Term I 2,013	Term III 2,012	Term I 2,013	Term III 2,012	Term I 2,013
Pre-primary & primary pre-primary	Pupil	105,257	123,719	105,257	123,719	43,422	48,663	115,378	116,271	100,003	109,133	286,450	291,897	100,831	108,028	96,195	96,672
Primary Dav Govt	Pupil	40,653	41,542	40,653	41,542	61,601	62,470	50,856	44,924	45,793	47,439	68,776	71,536	18,248	30,625	45,045	52,655
Primary Dav Pvt	Pupil	40,653	41,542	40,653	41,542	85,162	86,104	50,856	44,924	174,057	177,416	68,776	71,536	18,248	30,625	45,045	52,655
Primary Boarding Govt	Pupil	369,393	361,516	369,393	361,516	314,496	333,203	318,708	319,011	208,495	213,092	344,480	370,046	284,581	250,839	213,286	201,762
Primary Boarding Pvt	Pupil	369,393	361,516	369,393	361,516	294,048	324,524	318,708	319,011	331,199	336,415	344,480	370,046	284,581	250,839	213,286	201,762
Secondary education day																	
Secondary Dav Govt	Student	334,642	331,548	334,642	331,548	167,625	189,050	143,975	162,179	194,214	127,355	124,167	124,167	190,172	219,241	107,910	117,729
Secondary Dav Pvt	Student	334,642	331,548	334,642	331,548	130,683	133,155	143,975	162,179	194,214	127,355	124,167	124,167	190,172	219,241	107,910	117,729
Secondary Boarding Govt	Student	756,747	726,739	756,747	726,739	521,039	527,744	447,449	447,449	409,106	427,369	695,110	774,218	380,441	380,441	254,866	225,238
Secondary Boarding Pvt	Student	756,747	726,739	756,747	726,739	521,039	527,744	447,449	447,449	409,106	427,369	695,110	774,218	380,441	380,441	254,866	225,238
Secondary education day																	
Secondary Dav Govt	Student	283,886	210,152	283,886	210,152	108,821	223,500	154,158	125,989	221,880	190,835	181,517	181,517	214,197	258,028	120,924	133,427
Secondary Dav Pvt	Student	283,886	210,152	283,886	210,152	141,668	146,744	154,158	125,989	221,880	190,835	181,517	181,517	214,197	258,028	120,924	133,427
Secondary Boarding Govt	Student	774,600	745,552	774,600	745,552	532,051	546,967	510,379	510,379	444,476	449,365	717,713	772,595	395,795	385,257	263,566	231,306
Secondary Boarding Pvt	Student	774,600	745,552	774,600	745,552	532,051	546,967	510,379	510,379	444,476	449,365	717,713	772,595	395,795	385,257	263,566	231,306
Tertiary Education																	
Bachelors Degree	Student	735,458	735,458	735,458	735,458	739,305	739,305	858,929	858,929	888,570	888,570	687,163	687,163	849,729	849,729	709,244	709,244
Diploma	Student	422,909	422,909	422,909	422,909	425,121	425,121	493,907	493,907	510,952	510,952	395,137	395,137	488,617	488,617	407,834	407,834
Other Education																	
Computer courses	Student	323,580	323,580	323,580	323,580	274,955	274,955	216,700	216,700	301,247	301,247	242,265	242,265	269,505	269,505	209,508	209,508

KHI - Kampala High Income
KML- Kampala Middle and Low
Pvt - Privat
Govt- Government

KHI Prices
Blankets- MINT
Electric Iron- Steam Iron
Coffee- Nescafe
Tea leaves- Tea bags

Source: Uganda Bureau of Statistics